



**Surname** \_\_\_\_\_

**Other Names** \_\_\_\_\_

**Centre Number** \_\_\_\_\_

**Candidate Number** \_\_\_\_\_

**Candidate Signature** \_\_\_\_\_

**A-level**

**PSYCHOLOGY**

**Paper 2 Psychology in context**

**7182/2**

**Friday 8 June 2018**

**Morning**

**Time allowed: 2 hours**

**For this paper you may use:**

- a calculator.

**At the top of the page, write your surname and other names, your centre number, your candidate number and add your signature.**

**[Turn over]**



# INSTRUCTIONS

- **Use black ink or black ball-point pen.**
- **Answer ALL questions. You must answer the questions in the spaces provided. Do NOT write on blank pages.**
- **Do all rough work in this book. Cross through any work you do not want to be marked.**



## **INFORMATION**

- **The marks for questions are shown in brackets.**
- **The maximum mark for this paper is 96.**
- **Questions should be answered in continuous prose. You will be assessed on your ability to:**
  - **use good English**
  - **organise information clearly**
  - **use specialist vocabulary where appropriate.**

**DO NOT TURN OVER UNTIL TOLD TO DO SO**



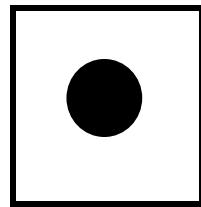
**SECTION A****APPROACHES IN PSYCHOLOGY**

**Answer ALL questions in this section.**

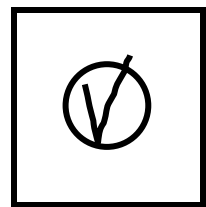
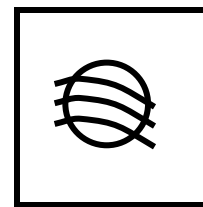
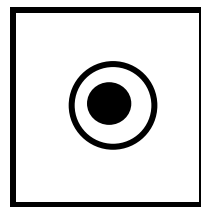
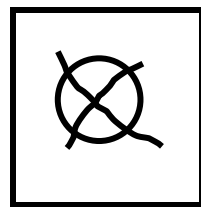
**Only ONE answer per question is allowed.**

**For each multiple-choice answer, completely fill in the circle alongside the appropriate answer.**

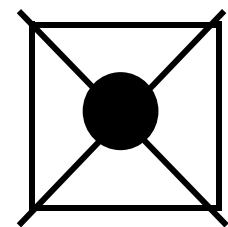
**CORRECT METHOD**



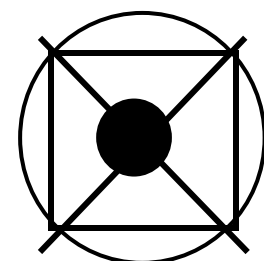
**WRONG METHODS**



**If you want to change your answer you must cross out your original answer as shown.**



**If you wish to return to an answer previously crossed out, ring the answer you now wish to select as shown.**



0	1
---	---

**Which of the following statements about the cognitive approach is FALSE?**

**Shade ONE box only. [1 mark]**

**A Inferences about internal mental processes are made on the basis of behaviour.**

**B Internal mental processes are studied scientifically.**

**C Mental processes are studied directly by making inferences.**

**D Theoretical and computer models are used to help explain mental processes.**

**[Turn over]**











**BLANK PAGE**

**[Turn over]**



**0 4**

**Outline the behaviourist approach.  
Compare the behaviourist approach  
with the biological approach.  
[16 marks]**

**You may use this space to plan  
your answer.**

---

---

---

---



















**BLANK PAGE**

**[Turn over]**



**SECTION B**

**BIOPSYCHOLOGY**

**Answer ALL questions in this section.**

**0 5**

**Give ONE difference between the autonomic nervous system and the somatic nervous system. [1 mark]**

---

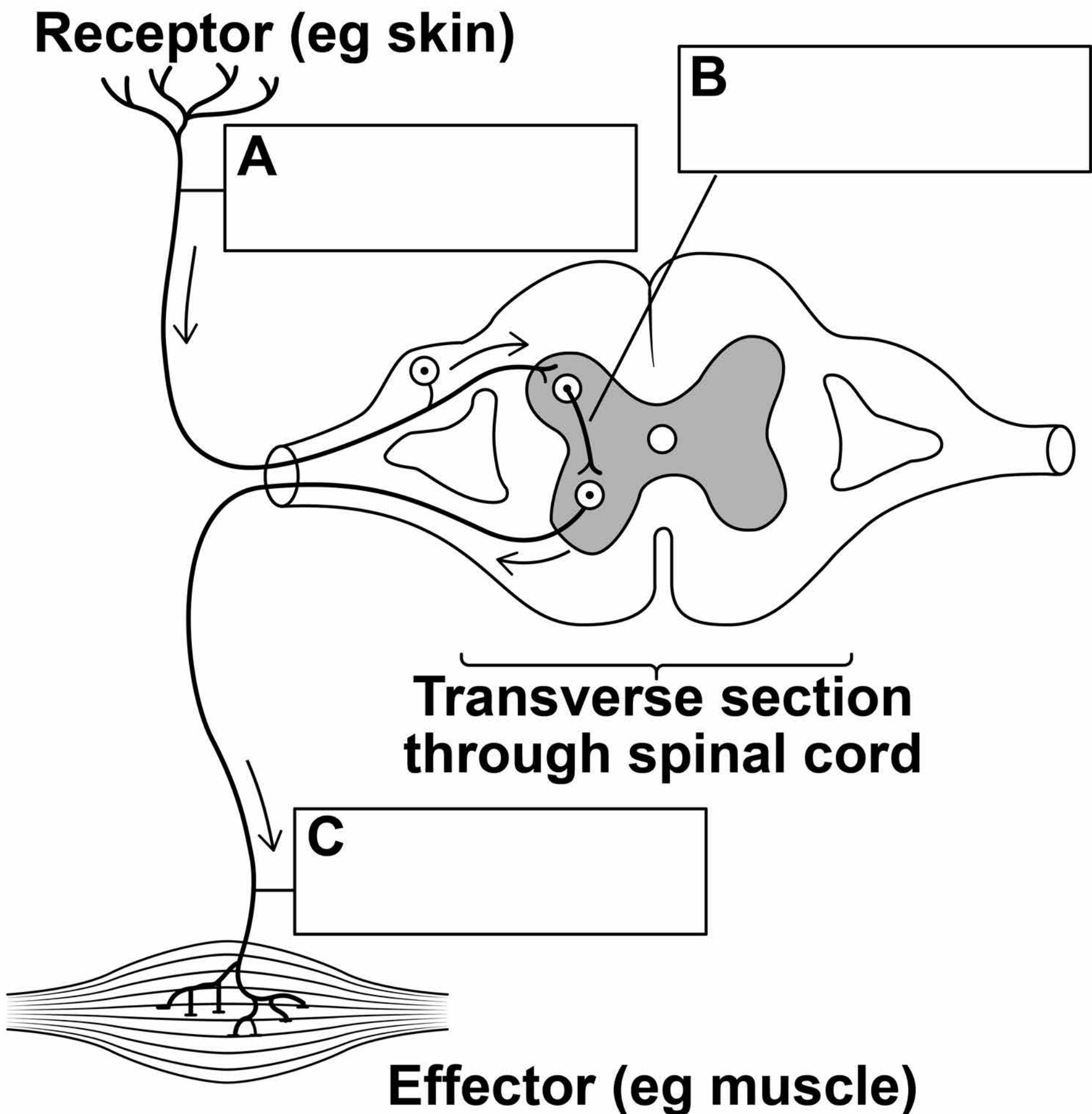
---

---

---

- 0 6** Name the types of neurons labelled A, B and C on FIGURE 1 below. Write your answers in the boxes provided. [3 marks]

**FIGURE 1**



**[Turn over]**





**BLANK PAGE**

**[Turn over]**





















**Julia decided to record how many hours her baby slept for in the day and in the night for one week.**

**TABLE 1 The number of hours slept in the day and the number of hours slept in the night over one week**

	<b>Monday</b>	<b>Tuesday</b>	<b>Wednesday</b>	<b>Thursday</b>	<b>Friday</b>	<b>Saturday</b>	<b>Sunday</b>
<b>Number of hours slept in the day</b>	<b>8.5</b>	<b>9.0</b>	<b>7.0</b>	<b>9.5</b>	<b>10.5</b>	<b>6.5</b>	<b>8.5</b>
<b>Number of hours slept in the night</b>	<b>9.0</b>	<b>8.0</b>	<b>8.5</b>	<b>7.0</b>	<b>7.5</b>	<b>10.5</b>	<b>8.0</b>





**1 0** Calculate the mean number of hours slept in the night.  
Show your workings.

**Give your answer to TWO significant figures.  
[3 marks]**

---

---

---

---

---

---

---

---

---

---

**33**

**[Turn over]**



**BLANK PAGE**



**1 1** Explain ONE reason why the mean is the most appropriate measure of central tendency for this set of data.  
**[2 marks]**

---

---

---

---

---

---

---

---

**[Turn over]**

<b>24</b>

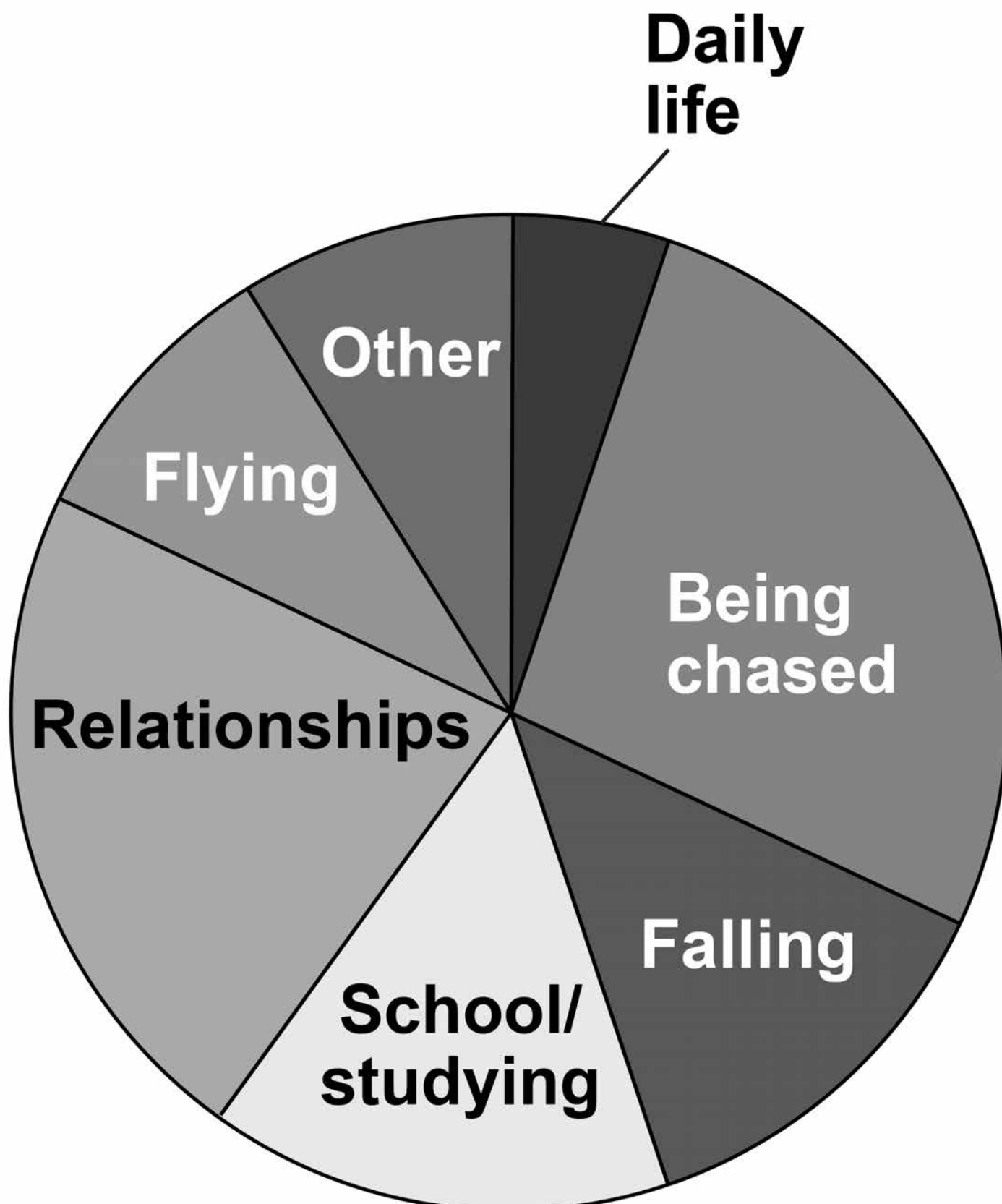
**SECTION C****RESEARCH METHODS**

**Answer ALL questions in this section.**

**A psychologist was reading an article about typical dream themes in adults.**

**FIGURE 2 shows the main dream themes identified in the article.**

**FIGURE 2 Main dream themes**



1	2
---	---

Using FIGURE 2, estimate the percentage of dreams that were reported to be about being chased.

Shade ONE box only. [1 mark]

**A** 4%

**B** 12%

**C** 27%

**D** 42%

[Turn over]

The psychologist was interested in finding out whether dream themes differed between males and females, particularly in terms of social interaction. She decided to conduct a pilot study. Twenty undergraduate students (8 male and 12 female) volunteered for the study. For a six-week period the students were interviewed at 9 am each morning when they arrived at university. Interviewers, who did not know the purpose of the study, carried out and recorded the dream interviews.

1	3
---	---

What is meant by a pilot study? Explain ONE possible reason why the psychologist decided to conduct a pilot study for this investigation. [3 marks]

---

---

















**When comparing the data for males and females, the psychologist found that there was a difference in the proportion of friendly and aggressive social interactions. This is shown in TABLE 2.**

**TABLE 2 Percentage of friendly and aggressive social interactions in dreams reported by males and females**

	<b>Males</b>	<b>Females</b>
<b>Friendly</b>	<b>40%</b>	<b>56%</b>
<b>Aggressive</b>	<b>60%</b>	<b>44%</b>

**1 8** A total of 375 dreams reported by males included social interaction. Use the data in TABLE 2 to calculate how many of these dreams reported by males were classified as aggressive. Show your workings. [2 marks]

---

---

---

---

---

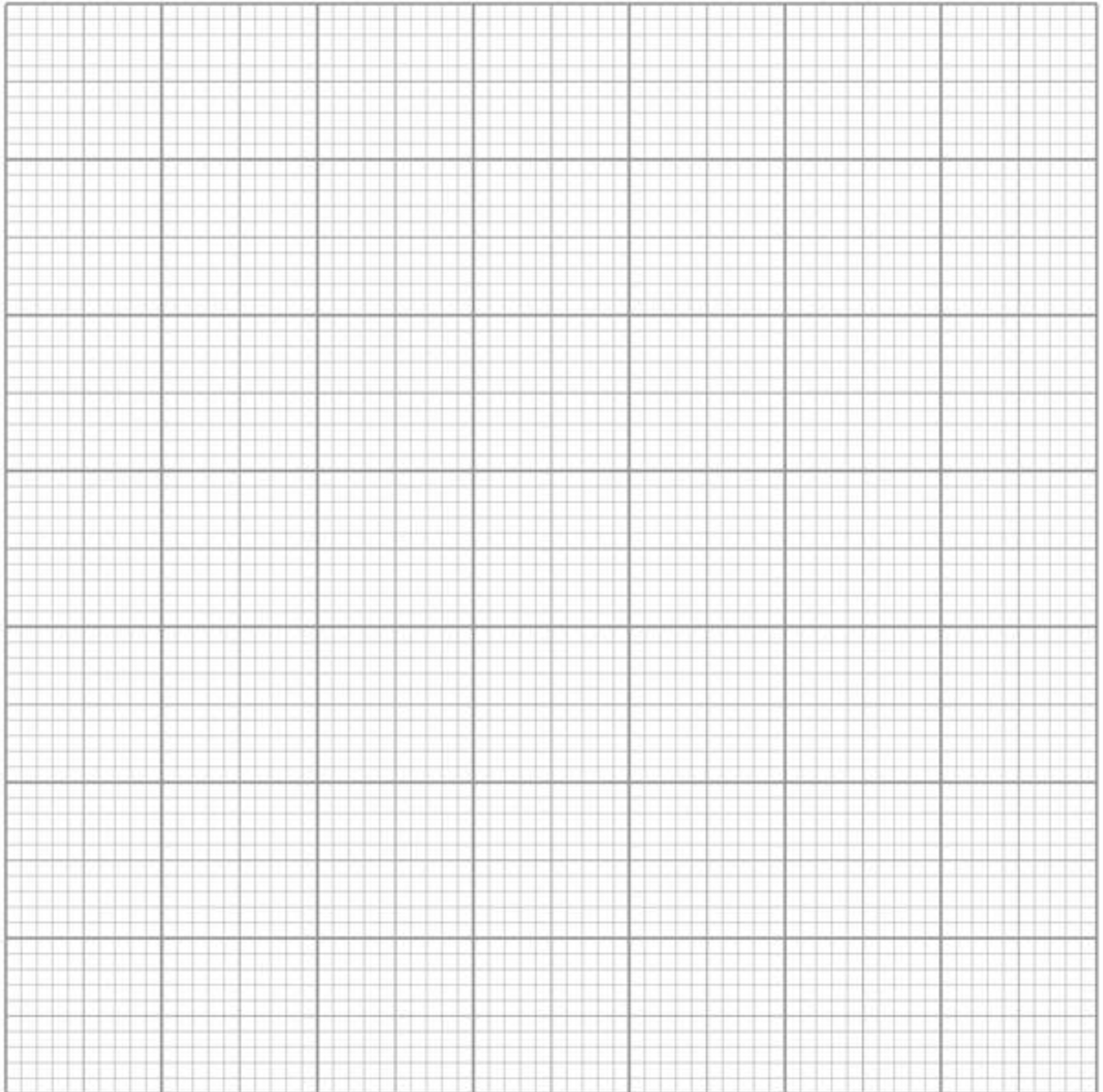
---

**[Turn over]**

**1 9**

**Draw a suitable graphical display to represent the data in TABLE 2. Label your graph appropriately. [4 marks]**

**Title** \_\_\_\_\_





**BLANK PAGE**

**[Turn over]**



**The psychologist decided to conduct an experiment to investigate the effect of watching horror films before going to bed.**

**A volunteer sample of 50 university students consented to take part in the experiment.**

**The 50 students were randomly split into two groups. GROUP 1 watched a horror film before going to bed each night for the first week then a romantic comedy before going to bed each night for the second week. GROUP 2 watched the romantic comedy in the first week and the horror film in the second week.**

**When the students woke up each morning, each student received a text message that asked if they had had a nightmare during the night. They could respond 'yes' or 'no'.**

**2 0** Write a brief consent form that would have been suitable for use in this experiment.

**The consent form should:**

- include some detail of what participants might expect to happen
- refer to ethical issues
- be in an appropriate format/style.

**[6 marks]**

---

---

---

---

---

---

---

---

---

---

**[Turn over]**







**2 2** The psychologist used a repeated measures design in this experiment.

**Explain why it was important to use a repeated measures design in this case. [2 marks]**

---

---

---

---

---

---

---

**[Turn over]**

**2 3**

**The psychologist used counterbalancing in this experiment.**

**Explain why it was appropriate to use counterbalancing in this experiment. [2 marks]**

---

---

---

---

---

---

---

---





The psychologist collated the responses of all the participants over the two-week period and calculated the mean and standard deviation for each condition.

**TABLE 3 Mean number of nightmares reported and the standard deviation for each condition**

	Mean number of nightmares in 7 days	Standard deviation
Horror films	2.18	1.48
Romantic comedies	0.30	0.61

**2 | 5** What do the mean AND standard deviation values in TABLE 3 suggest about the effect of the type of film watched on the occurrence of nightmares? Justify your answer. [4 marks]

---



---







**There are no questions printed on this page**

For Examiner's Use	
Section	Mark
A	
B	
C	
<b>TOTAL</b>	

### Copyright information

For confidentiality purposes, from the November 2015 examination series, acknowledgements of third party copyright material will be published in a separate booklet rather than including them on the examination paper or support materials. This booklet is published after each examination series and is available for free download from [www.aqa.org.uk](http://www.aqa.org.uk) after the live examination series.

Permission to reproduce all copyright material has been applied for. In some cases, efforts to contact copyright-holders may have been unsuccessful and AQA will be happy to rectify any omissions of acknowledgements. If you have any queries please contact the Copyright Team, AQA, Stag Hill House, Guildford, GU2 7XJ

Copyright © 2018 AQA and its licensors. All rights reserved.

**IB/M/Jun18/RR/7182/2/E3**

