

ENTRY LEVEL CERTIFICATE MATHEMATICS 5930/6

Externally set assignment
Component 6 – Measures

Specimen 2015

Time allowed: 45 minutes

Materials

For this paper you must have:

- a pen
- a pencil
- a ruler

You may use a calculator.

20 counters should be made available for each candidate.



Instructions

- Use black ink or black ball-point pen. Draw diagrams in pencil.
- Fill in the boxes at the bottom of this page.
- Answer **all** questions.
- You must answer the questions in the space provided. Do not write outside the box around each page or on blank pages.
- Do all rough work in this book. Cross through any work that you do not want to be marked.

Information

- The marks for questions are shown in brackets.
- The maximum mark for this paper is 30
- You are expected to use a calculator where appropriate.

Advice

- In all calculations, show clearly how you worked out your answer.

Please write clearly, in block capitals.

Centre number

Candidate number

Surname

Forename(s)

Candidate signature _____

Answer **all** questions in the spaces provided.

1 Look at the pencils.



A



B



C



D

1 (a) Which is the **longest** pencil?

[1 mark]

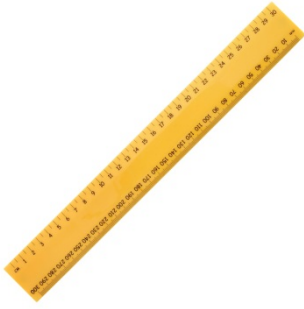
1 (b) Which two pencils are the same length?

[1 mark]

_____ and _____

- 2 Which is **heavier**?
Tick (✓) your answer.

[1 mark]

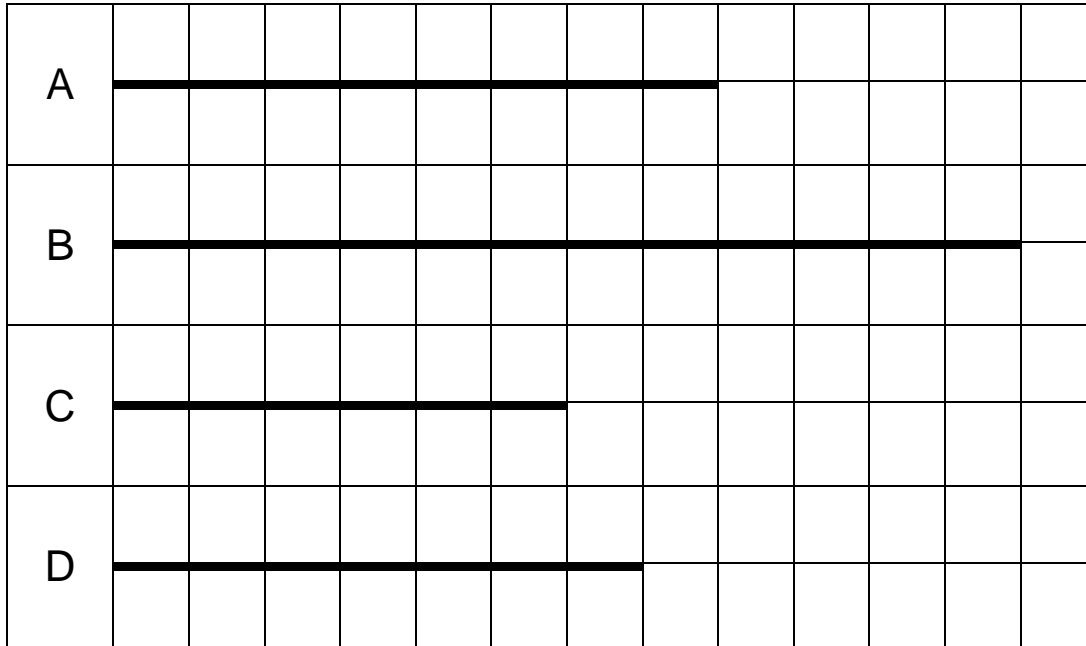


- 3 Which jug could hold the most water?
Tick (✓) your answer.

[1 mark]



4 Look at the centimetre grid.



4 (a) How long is line A?

[1 mark]

_____ cm

4 (b) How long is line B?

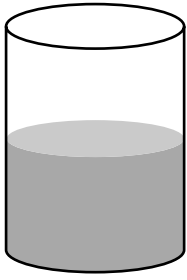
[1 mark]

_____ cm

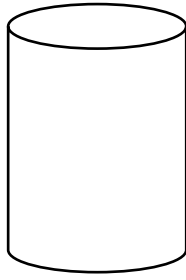
4 (c) Which is the shortest line?

[1 mark]

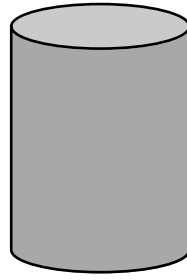
5 Look at the containers.



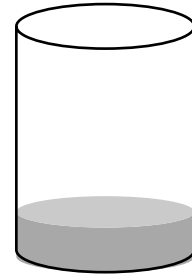
A



B



C



D

5 (a) Which container is full?

[1 mark]

5 (b) Which container is half full?

[1 mark]

5 (c) Which container is **less** than half full?

[1 mark]

6 Choose from the units in the box to complete the following.

cm

g

ml

kg

km

6 (a) My foot is 28 _____ long.

[1 mark]

6 (b) My bag of crisps weighs 28 _____

[1 mark]

6 (c) My carton of drink holds 200 _____ of juice.

[1 mark]

7 Look at the following measures.

6 cm

94 cm

13 cm

30 cm

Write the measures in order, starting with the smallest.

[1 mark]

8 Measure, in millimetres, the length of each line.

[1 mark]

8 (a)



_____ mm

[1 mark]

8 (b)



_____ mm

9 Estimate how much water a large bucket will hold.

Tick (✓) the correct answer.

[1 mark]

50 ml

5 litres

10 Estimate the weight of a mouse.

Tick (✓) the correct answer.

[1 mark]

50 grams

2 kg

11 Draw a line $7\frac{1}{2}$ cm long.

[1 mark]

12 Look at the vehicles.

Tick (✓) the one which would be 10 m long.

[1 mark]



13 Write 3500g in kg

[1 mark]

_____ kg

14 Amy buys the following items.

2 kg of apples

1.25 kg of grapes

1.5 kg of potatoes

0.5 kg of strawberries

Her shopping bag can hold up to 5kg.

Will Amy need another bag?

Show how you decide.

[3 marks]

15 Look at the list.

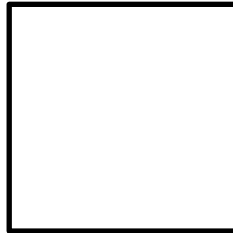
42 mm 3 cm 1.4 m 135 cm

Which is the **longest** ?

[1 mark]

16 Measure the perimeter of the square in centimetres.

[1 mark]



_____ cm

17 Which of the following would you use to weigh an apple?

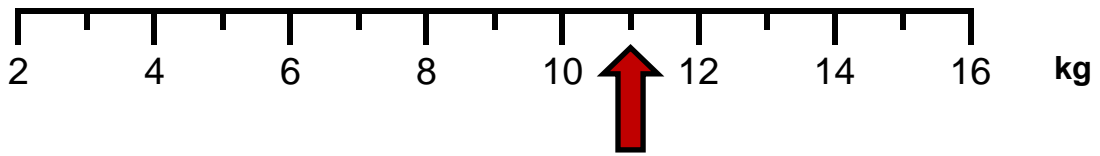
Tick (✓) your answer.

[1 mark]



18 Write down the weight shown by the arrow.

[1 mark]



_____ kg

19 Look at the temperatures.

Which is the **warmest** temperature?

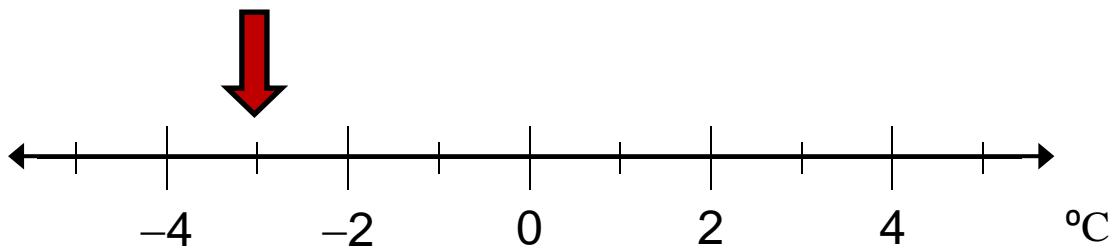
Tick (✓) your answer

[1 mark]

1°C	-5°C	3°C	-1°C
<input type="checkbox"/>	<input type="checkbox"/>	<input type="checkbox"/>	<input type="checkbox"/>

20 Write down the temperature shown on the scale.

[1 mark]



_____ °C

END OF QUESTIONS

There are no questions printed on this page

**DO NOT WRITE ON THIS PAGE
ANSWER IN THE SPACES PROVIDED**

Copyright © 2015 AQA and its licensors. All rights reserved.