



UNIVERSITY OF CAMBRIDGE INTERNATIONAL EXAMINATIONS
General Certificate of Education Ordinary Level



FASHION AND FABRICS

6050/02

Paper 2 Practical Test

October/November 2010

2 hours 30 minutes

Additional Materials:

Sewing equipment
Fabric
Pattern
Interfacing
Scissors

Sewing thread to match fabric
Tacking thread
Pencil
Ruler



This document consists of **5** printed pages and **3** blank pages.



Materials provided

- (a) McCall's pattern M4432, size CCE (3-4-5-6).
An illustration of the dress (**view F**) is on the envelope containing the pattern.
- (b) A piece of fabric 90 cm wide and 36 cm long.
- (c) A piece of iron-on interfacing 24 cm wide and 18 cm long.
- (d) Sewing thread to match the fabric.
- (e) Tacking thread.

For the purpose of this test the front facing is **not** to be interfaced. For the test you are to make up the **right half** of the dress bodice **view F size 6**.

Before you begin, you should study the question paper carefully, together with the illustration, the pattern and the fabric.

This is a multi-size pattern. The cutting line for **size 6** is shown by **the outer black solid line**.

A seam allowance of 1.5 cm is allowed within the pattern, unless otherwise stated, although it is not marked.

THE LABEL

Candidate's name

.....

Centre No./Candidate No.

..... /

The Test

1 Preparation

- (a) Write your name and candidate number on the envelope provided.
- (b) Select and separate pattern pieces 1, 2, 3, 4 and 6 for the bodice **view F size 6**.
- (c) On piece 4, the neck facing, cut through the centre back line and keep the piece of pattern with the straight grain line.

2 Cutting out

- (a) Place the pattern pieces on the fabric as shown in the layout. For the purpose of this test, place pattern pieces 1 and 2 to the selvedge.
- (b) On pattern piece 3, the collar, use the 'place on fold line' as the straight grain line and cut out the **two** pieces of collar.
- (c) Cut out the **right half** of the dress bodice, **view F size 6**.
- (d) Transfer the pattern markings which are needed for making up the test.
- (e) Cut out the interfacing for the collar as shown in the layout. For the purpose of this test the bodice front is **not** to be interfaced.

3 Making up

It is important that pressing is done at all stages.

Make up the **right half** of the bodice as follows:

(a) Stay stitching

Stay stitch the neck edge of the bodice front and bodice back 5 mm from the outer edge.

(b) Front edge

Neaten the outer edge of the bodice front (self facing).

(c) Shoulder seam

Work the shoulder seam.

(d) Neck facing

With wrong sides together, fold the neck facing along the roll line. Tack and press.

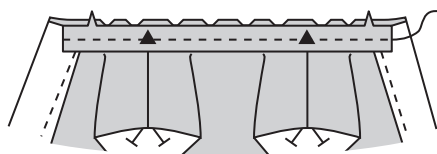
(e) Collar

(i) Fuse interfacing to wrong side of collar.

(ii) Make up the collar.

(f) Attaching the collar

- (i) Clip the neckline of the bodice to the stay stitching.
- (ii) Pin the collar to the neck edge, matching notches and balance marks. Tack.
- (iii) Turn the front facing to the **OUTSIDE** along the fold line, right sides together. Tack across the neck edge.
- (iv) Attach the facing to the neck edge over the collar, matching the notches and balance marks, (see diagram). Stitch.



- (v) Trim seam.
- (vi) Turn facing to inside and stitch with a suitable hand sewn stitch.
- (vii) Tack the front facing in place along the fold line. **Do not** remove this tacking at the end of the test.

(g) Underarm seam

Work the underarm seam.

(h) Sleeve

- (i) Ease stitch the upper edge of the sleeve.
- (ii) Work the sleeve seam.
- (iii) Turn up the sleeve hem and machine stitch in place. (1.5 cm is allowed on this pattern).

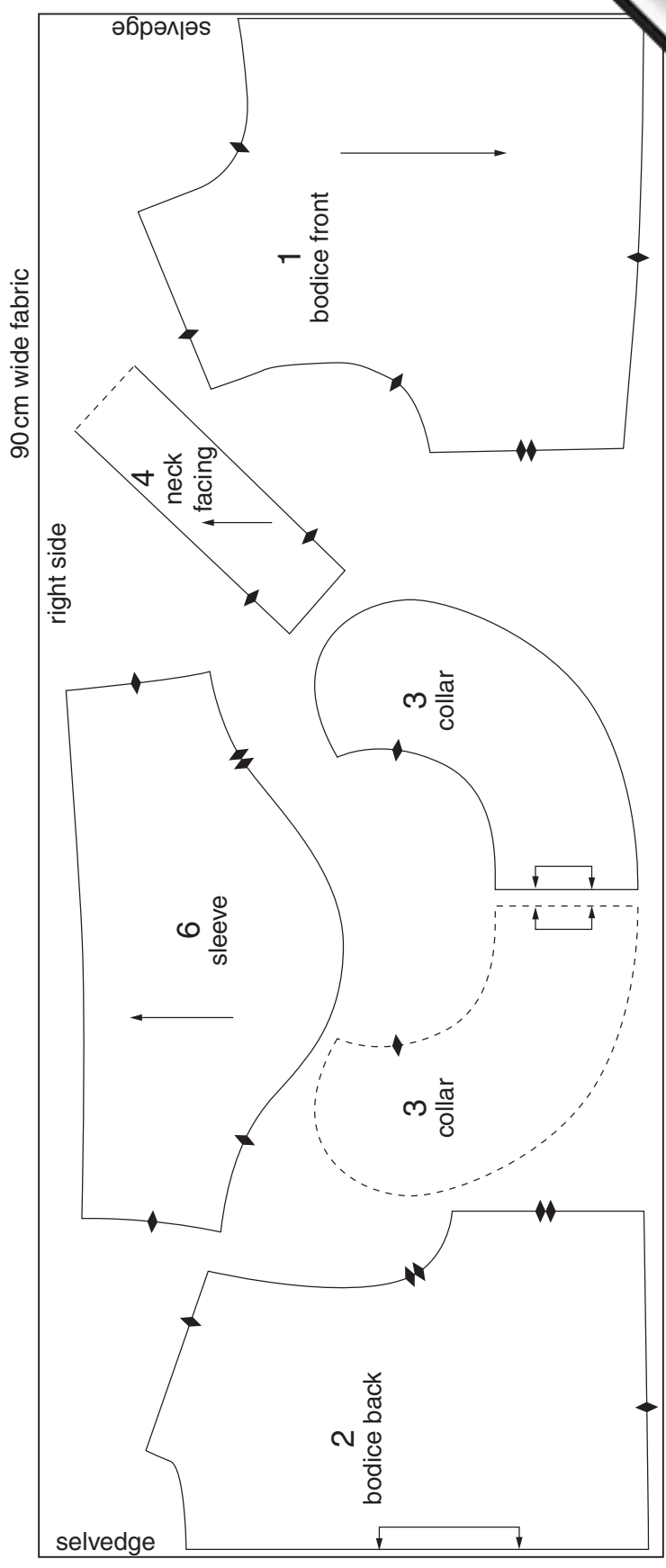
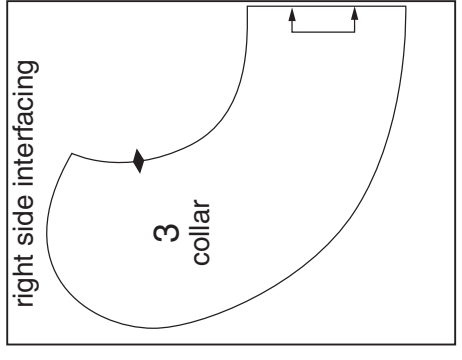
(i) Setting in the sleeve

- (i) Set the sleeve into the armhole, right sides together, matching the notches and balance marks.
- (ii) **Do not** neaten or trim this seam.

(j) Presentation

- (i) At the end of the examination remove the needle and unnecessary pins from your work.
- (ii) Write your name and candidate number on the label provided. Cut out the label and tack it to your test. The label should not cover any stitching and should be on **single fabric**.
- (iii) Press your work, fold it carefully and place it in the envelope provided. Do **not** include the scraps of fabric you have left over or the pattern.

5



For this test place pattern pieces 1 and 2 to the selvedge. On pattern piece 3 use the 'place on fold' as the 'straight grain' line

Permission to reproduce items where third-party owned material protected by copyright is included has been sought and cleared where possible. Every reasonable effort has been made by the publisher (UCLES) to trace copyright holders, but if any items requiring clearance have unwittingly been included, the publisher will be pleased to make amends at the earliest possible opportunity.

University of Cambridge International Examinations is part of the Cambridge Assessment Group. Cambridge Assessment is the brand name of University of Cambridge Local Examinations Syndicate (UCLES), which is itself a department of the University of Cambridge.