



Cambridge IGCSE™

CANDIDATE
NAME

CENTRE
NUMBER

--	--	--	--	--

CANDIDATE
NUMBER

--	--	--	--



COMBINED SCIENCE

0653/43

Paper 4 Theory (Extended)

October/November 2022

1 hour 15 minutes

You must answer on the question paper.

No additional materials are needed.

INSTRUCTIONS

- Answer **all** questions.
- Use a black or dark blue pen. You may use an HB pencil for any diagrams or graphs.
- Write your name, centre number and candidate number in the boxes at the top of the page.
- Write your answer to each question in the space provided.
- Do **not** use an erasable pen or correction fluid.
- Do **not** write on any bar codes.
- You may use a calculator.
- You should show all your working and use appropriate units.

INFORMATION

- The total mark for this paper is 80.
- The number of marks for each question or part question is shown in brackets [].
- The Periodic Table is printed in the question paper.

This document has **20** pages.

1 (a) Fig. 1.1 is a diagram of a wind-pollinated flower.

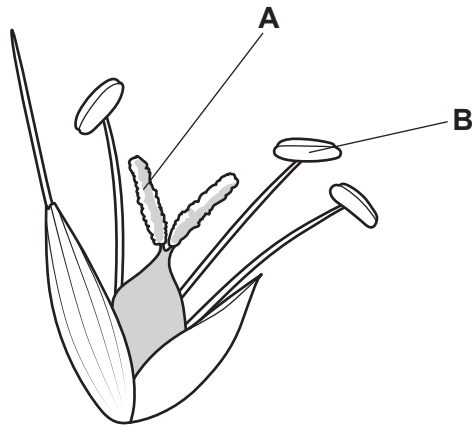


Fig. 1.1

(i) State the names of the parts labelled **A** and **B** on Fig. 1.1.

A

B

[2]

(ii) On Fig. 1.1, draw a label line and the letter **X** to identify the part that produces ovules. [1]

(iii) Describe **two** adaptations for wind pollination of the flower shown in Fig. 1.1.

1

2

[2]

(b) Fig. 1.2 shows a food web.

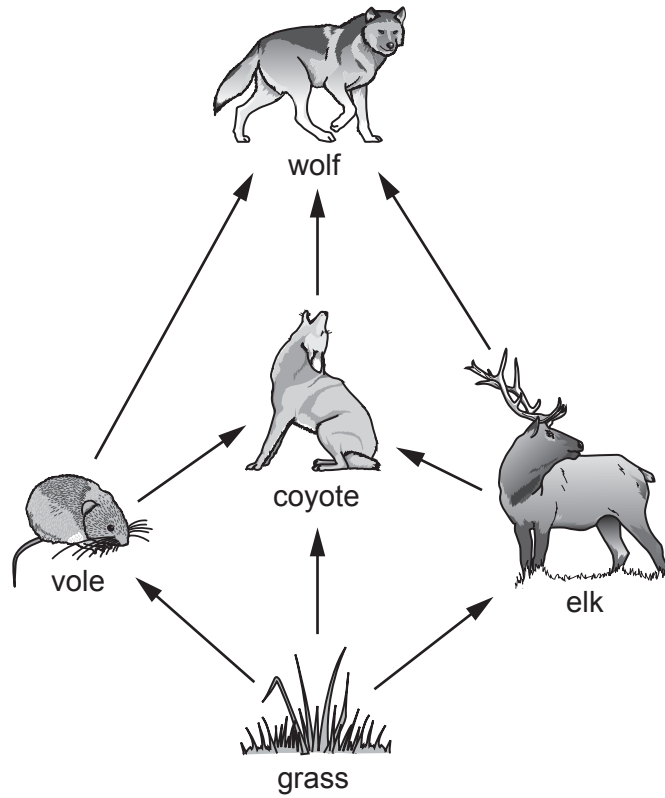


Fig. 1.2

(i) Use Fig. 1.2 to construct **one** food chain that contains the vole.

..... [2]

(ii) Identify **one** organism in Fig. 1.2 that is on the third trophic level.

..... [1]

(iii) Identify **one** organism in Fig. 1.2 that is a primary **and** a secondary consumer.

..... [1]

(c) Grass photosynthesises.

State the balanced chemical equation for photosynthesis.

..... [2]

[Total: 11]

- 2 The electronic structures of a chlorine atom and a chloride ion are shown in Fig. 2.1.

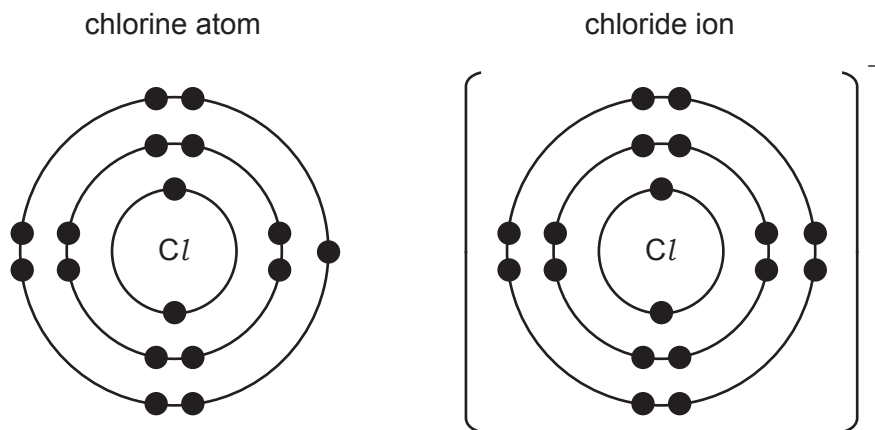


Fig. 2.1

- (a) State **two** differences between the chlorine atom and the chloride ion shown in Fig. 2.1.

1

2

[2]

- (b) (i) Explain how Fig. 2.1 can be used to deduce the proton number of chlorine.

.....

..... [1]

- (ii) Explain how Fig. 2.1 can be used to deduce the period number of chlorine in the Periodic Table.

.....

..... [1]

- (iii) Element **X** and chlorine are in the same group of the Periodic Table.

Element **X** is less reactive than chlorine.

Suggest the identity of element **X**.

Give a reason for your answer.

element **X**

reason

.....

[2]

(c) Table 2.1 shows the melting points of chlorine and sodium chloride.

Table 2.1

	melting point / °C
chlorine	-101
sodium chloride	801

Explain the difference in the melting points of chlorine and sodium chloride.

Use ideas about structure and attractive forces in your answer.

.....

.....

.....

..... [3]

[Total: 9]

3 A new world water speed record was set in 1978 by a specially designed speed boat.

Fig. 3.1 shows forces **K**, **L**, **M** and **N** acting on the moving boat.

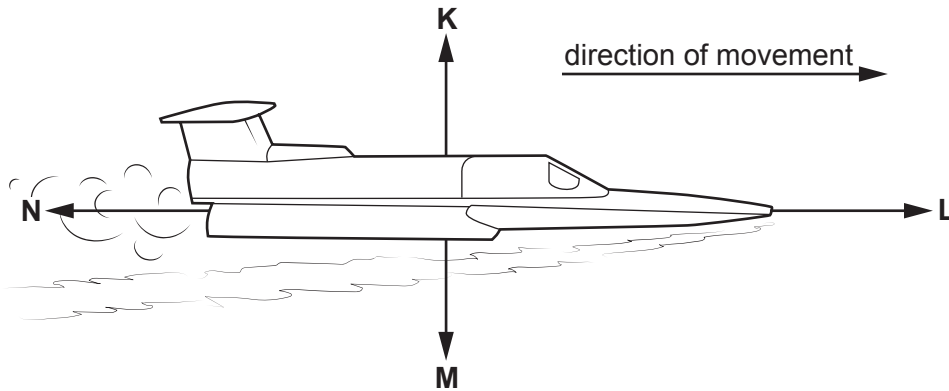


Fig. 3.1

(a) (i) State the letter that represents the friction acting on the boat. [1]

(ii) Force **L** is 10 000 N. Force **N** is 8 000 N.

Describe the effect of these forces on the motion of the boat.

.....
 [1]

(b) The world record speed of the boat is 142 m/s.

(i) Calculate the world record speed of the boat in kilometres per hour (km/h).

speed = km/h [1]

(ii) The engine of the boat exerts a force of 15 000 N to accelerate the boat from rest to its world record speed.

The boat moves a distance of 504 m.

Calculate the work done by the engine on the boat.

Give the unit of your answer.

work done = unit [3]

(c) Fig. 3.2 shows the speed–time graph for the boat doing a practice run.

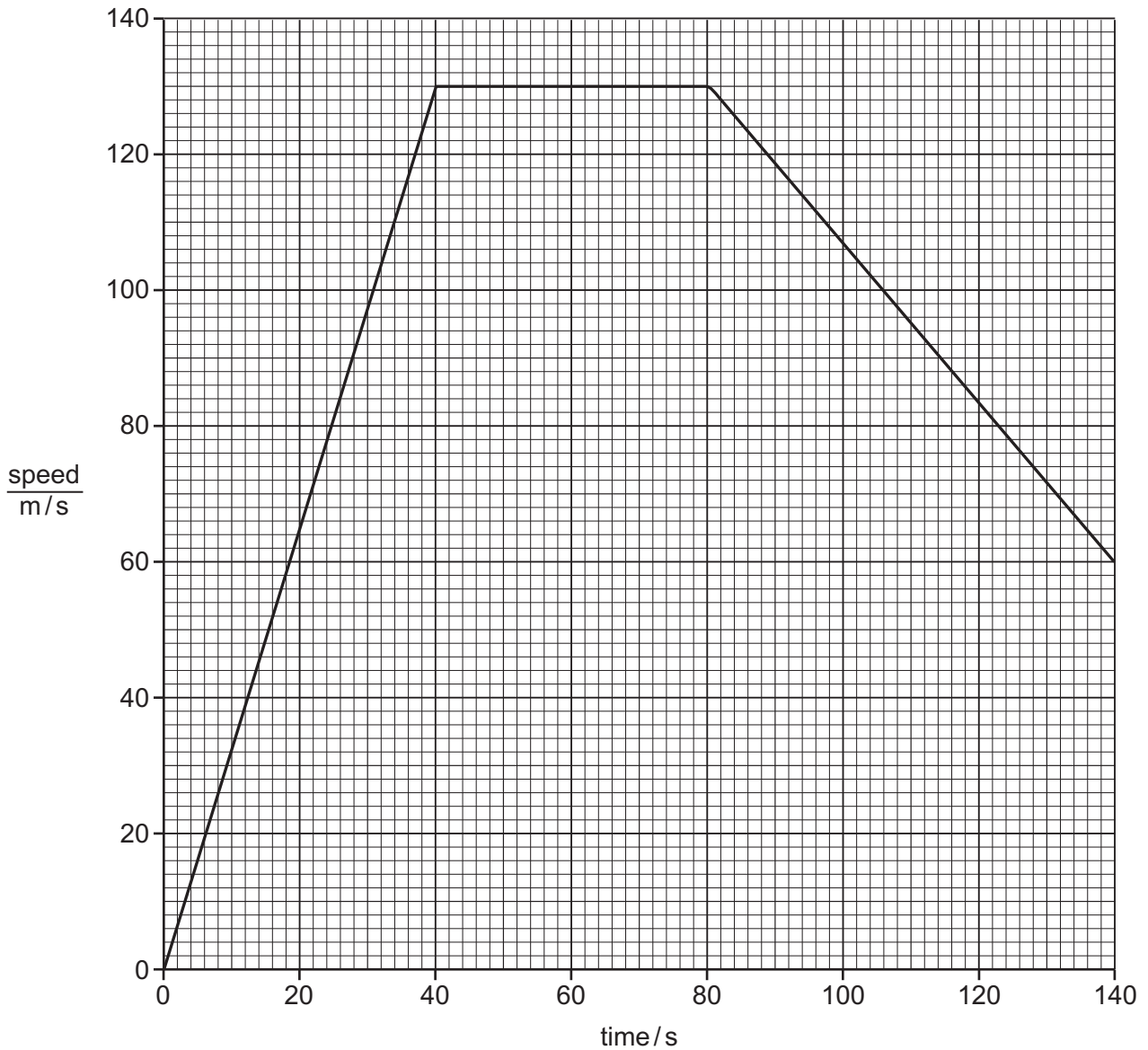


Fig. 3.2

(i) State the maximum speed of the boat shown in Fig. 3.2.

maximum speed = m/s [1]

(ii) Use Fig. 3.2 to determine the distance the boat moves between 0 and 80 s.

distance = m [3]

[Total: 10]

[Turn over

4 (a) Fig. 4.1 is a diagram of a human heart.

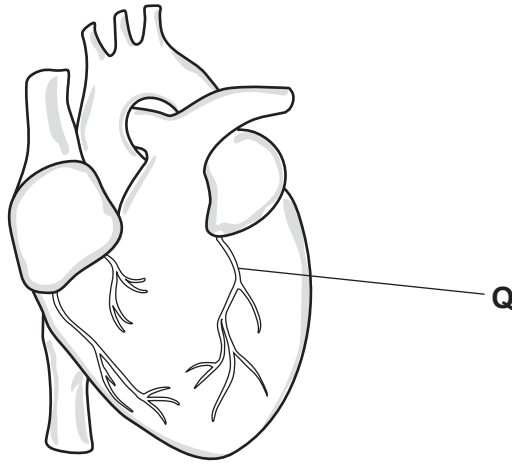


Fig. 4.1

(i) State the name of part **Q** and explain how it is linked to coronary heart disease.

Q

explanation

.....

[2]

(ii) Risk factors for coronary heart disease include diet and smoking.

State **two** other risk factors for coronary heart disease.

1

2

[2]

(b) Fig. 4.2 shows how physical activity affects heart rate.

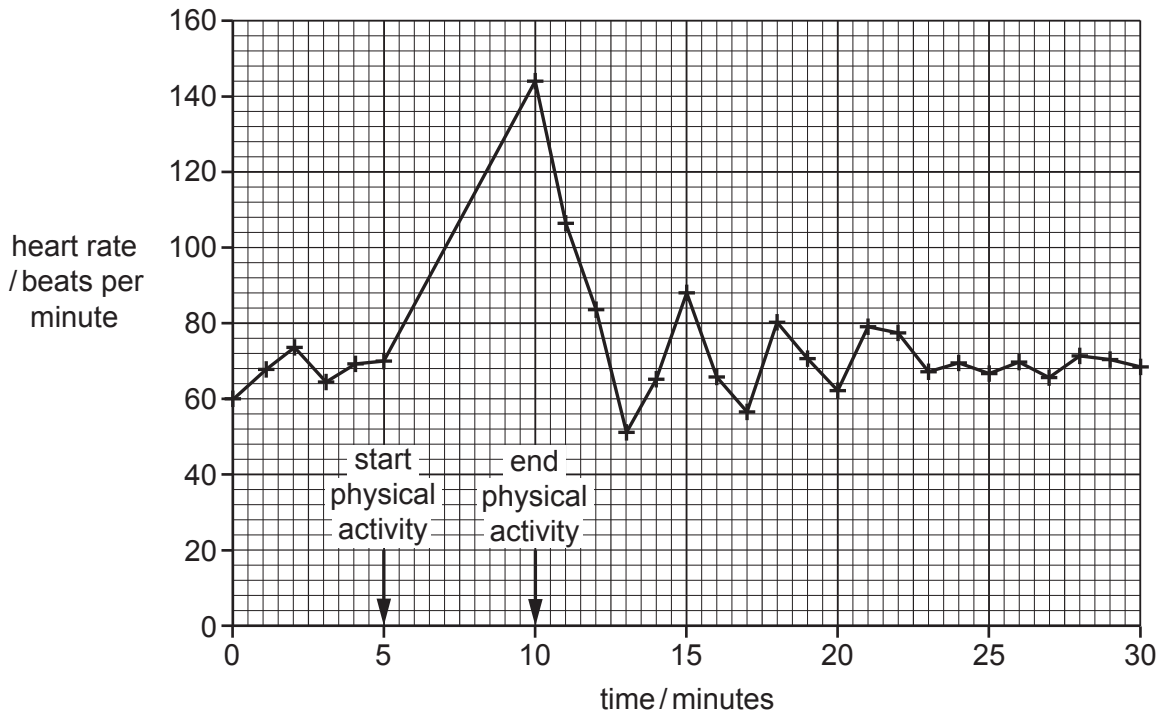


Fig. 4.2

(i) Use Fig. 4.2 to calculate the percentage increase in heart rate between 0 and 10 minutes.

percentage increase in heart rate = % [2]

(ii) Explain the shape of the graph in Fig. 4.2 between 5 and 10 minutes.

.....

.....

.....

.....

..... [3]

[Total: 9]

- 5 (a) Iron is extracted from hematite in the blast furnace.

One chemical equation for the extraction of iron in the blast furnace is shown.



- (i) Complete the balanced chemical equation. [2]
- (ii) Identify the reducing agent in this extraction.

Explain your answer.

reducing agent

explanation

.....

[1]

- (b) Iron rusts when it reacts with oxygen and water to make hydrated iron(III) oxide.

- (i) A word equation for the rusting of iron is shown.



Explain why rusting is described as an oxidation reaction.

.....

..... [1]

- (ii) State **one** method of rust prevention and describe how this method works.

method

description

.....

.....

[2]

(c) Iron reacts with dilute hydrochloric acid in an exothermic reaction.

(i) The reaction produces iron(II) chloride.

State the formula of iron(II) chloride.

..... [1]

(ii) Explain how a reaction is exothermic.

Use ideas about bonds in your answer.

.....
.....
.....
.....
..... [3]

[Total: 10]

6 Fig. 6.1 shows an electric toaster used to toast one slice of bread.

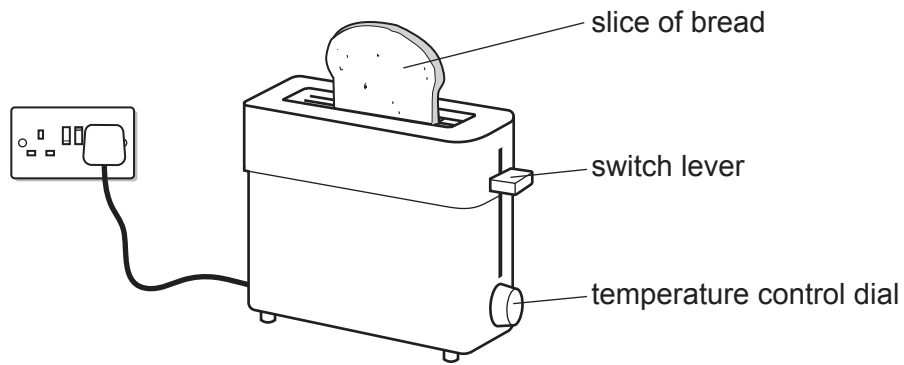


Fig. 6.1

Fig. 6.2 shows the circuit diagram for the toaster.

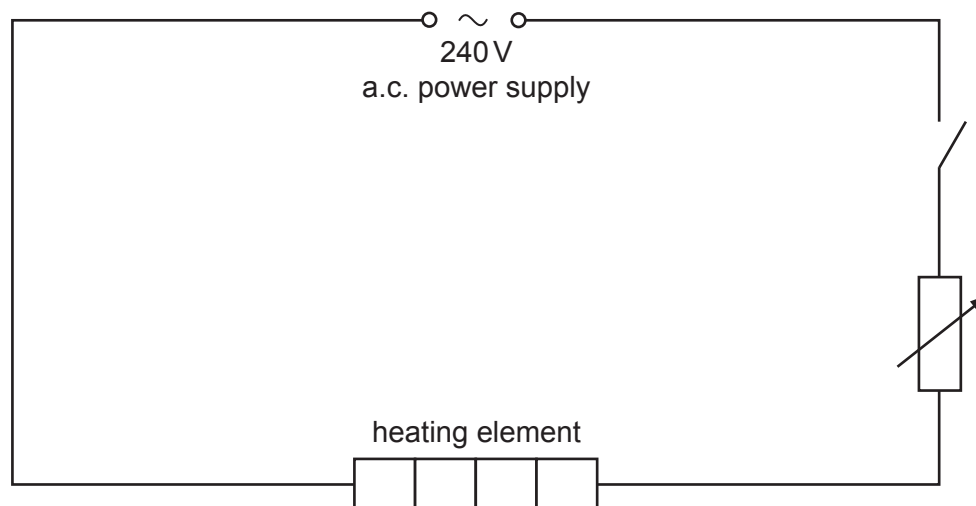


Fig. 6.2

(a) Add a voltmeter to the circuit diagram in Fig. 6.2 to measure the potential difference (p.d.) across the heating element.

Use the correct circuit symbol.

[1]

(b) The switch lever is pushed down to switch the toaster on.

The temperature control dial adjusts the variable resistor.

(i) The resistance of the variable resistor is adjusted to $36\ \Omega$.

The resistance of the heating element is $54\ \Omega$.

Calculate the total resistance in the circuit.

resistance = Ω [1]

(ii) The resistance of the variable resistor is decreased.

Explain why the thermal energy output from the heating element increases.

.....
.....
.....
..... [2]

- (c) Fig. 6.3 shows the circuit diagram for a different toaster that has two heating elements connected in parallel.

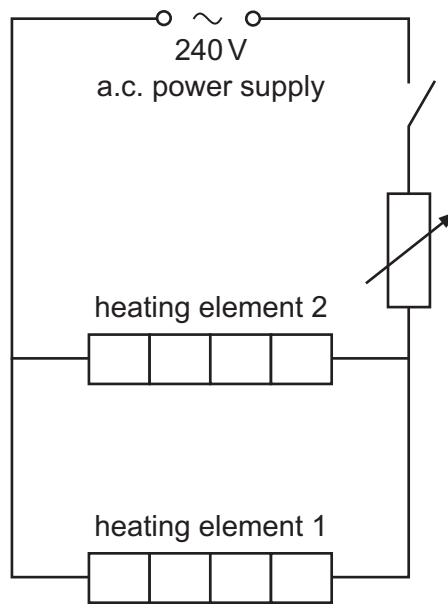


Fig. 6.3

- (i) Heating element 1 has a resistance of $41.0\ \Omega$.

Heating element 2 has a resistance of $53.0\ \Omega$.

Show that the combined resistance of the two heating elements in parallel is $23.1\ \Omega$.

[2]

- (ii) The variable resistor is adjusted so that the total resistance in the circuit is $60.0\ \Omega$.

The toaster is switched on.

The current in heating element 1 is 2.3 A .

Calculate the current in heating element 2.

current = A [3]

[Total: 9]

7 (a) Fig. 7.1 shows cells that line the gas exchange system of humans.

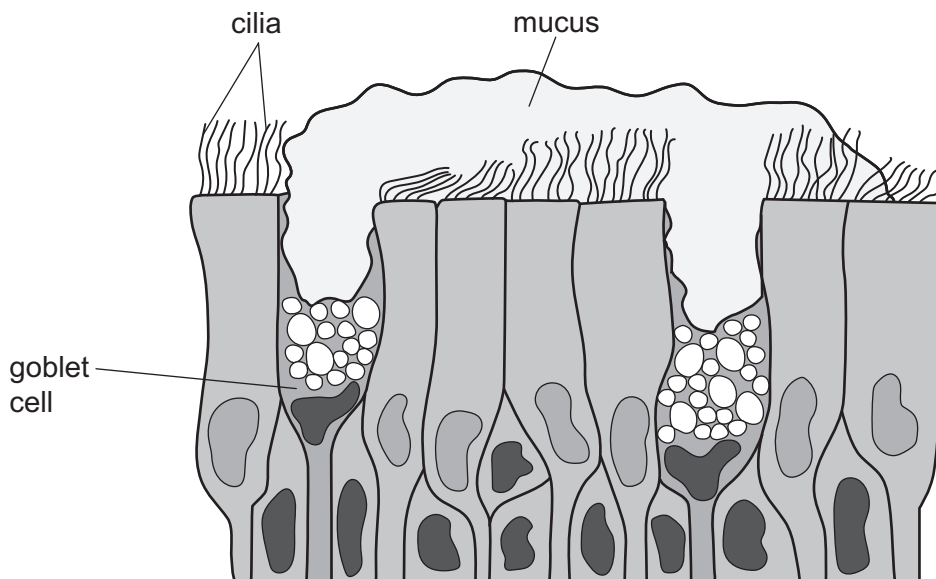


Fig. 7.1

(i) Use Fig. 7.1 to explain how tar in tobacco smoke prevents the cells from protecting the gas exchange system.

.....

 [3]

(ii) Explain how the carbon monoxide in tobacco smoke affects the function of red blood cells.

.....

 [2]

(b) The lungs contain a gas exchange surface. This surface is large and thin.

State **two** other features of gas exchange surfaces.

1
 2 [2]

[Total: 7]

8 Car engines take in air.

Unreacted air and other gases leave the car in the exhaust gases, as shown in Fig. 8.1.

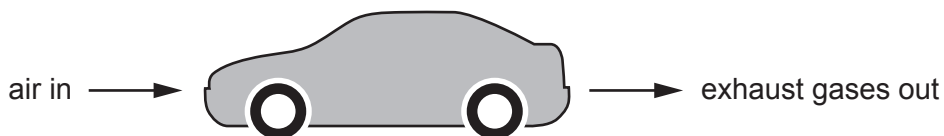


Fig. 8.1

(a) The air entering a car engine is a mixture of gases which includes nitrogen, oxygen, argon and carbon dioxide.

(i) State which **one** of these gases is monoatomic.

..... [1]

(ii) Air is a mixture. Carbon dioxide is a compound.

Explain the difference between a mixture and a compound.

.....

 [2]

(b) The concentration of oxygen in the air entering a car engine is greater than the concentration of oxygen in the exhaust gases leaving the car.

Explain why.

.....
 [2]

(c) Car exhaust gases cause an increase in the concentration of carbon dioxide in the atmosphere. This causes an enhanced greenhouse effect.

State **one** impact of an enhanced greenhouse effect.

..... [1]

(d) Carbon dioxide in the air dissolves in rainwater and causes damage to buildings.

State the name of **one** other gas that causes the same problem.

..... [1]

[Total: 7]

9 (a) (i) Fig. 9.1 shows an incomplete electromagnetic spectrum.

On Fig. 9.1, write infrared radiation in its correct place.

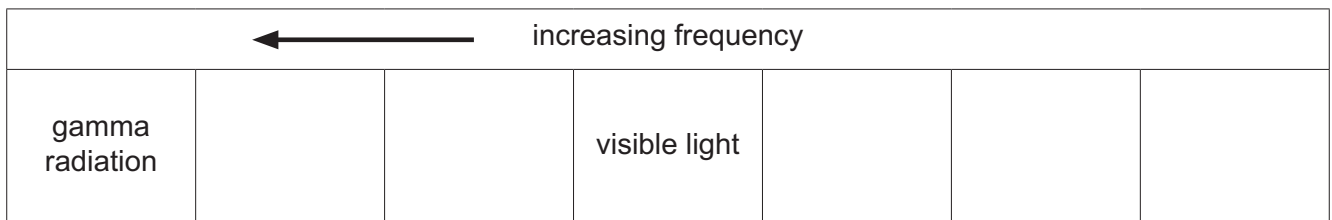


Fig. 9.1

[1]

(ii) State the speed of infrared radiation in a vacuum.

..... m/s [1]

(iii) A toaster for toasting bread is one use of infrared radiation.

State **one** other use of infrared radiation.

..... [1]

(b) Fig. 9.2 shows a type of vacuum flask used for carrying a cold liquid at 5 °C.

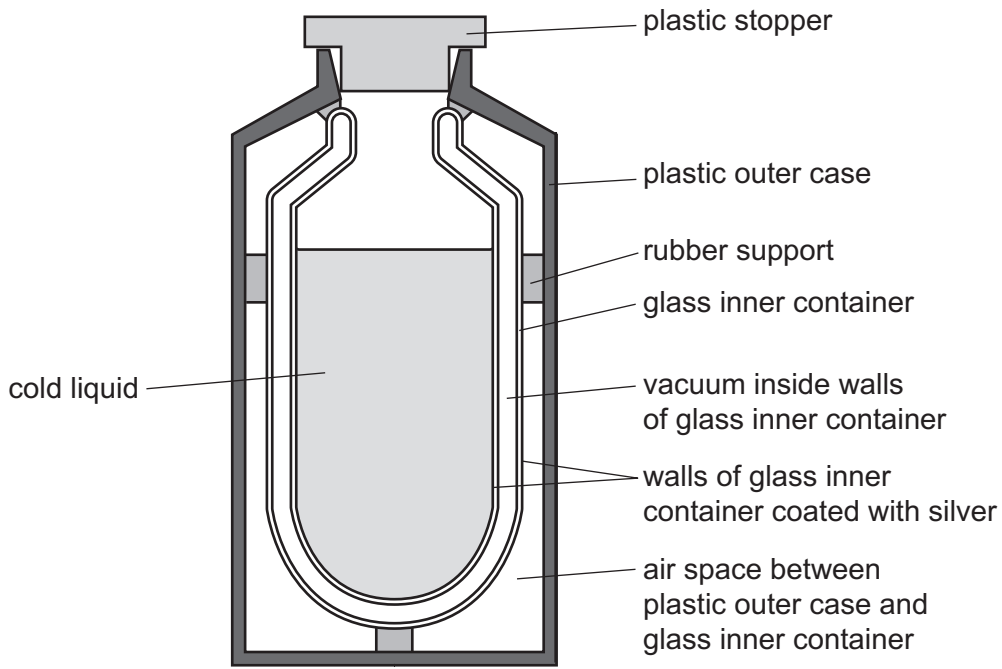


Fig. 9.2

The flask is placed in a room. The temperature of the room is 20 °C.

(i) Describe **one** way that the design of the flask reduces the transfer of thermal energy from the room to the liquid by:

convection

.....

radiation.

.....

[2]

(ii) Describe how a small amount of thermal energy is transferred from the room to the liquid by **conduction**.

Use ideas about vibrations in your answer.

.....

.....

..... [2]

- (iii) A special type of vacuum flask is used to store liquid air at -196°C .

Table 9.1 shows the boiling points of the main components of liquid air.

Table 9.1

component	boiling point/ $^{\circ}\text{C}$
argon	-186
nitrogen	-196
oxygen	-183

State which component is most likely to form bubbles of gas first.

Give a reason for your answer.

component

reason

.....

[1]

[Total: 8]

Permission to reproduce items where third-party owned material protected by copyright is included has been sought and cleared where possible. Every reasonable effort has been made by the publisher (UCLES) to trace copyright holders, but if any items requiring clearance have unwittingly been included, the publisher will be pleased to make amends at the earliest possible opportunity.

To avoid the issue of disclosure of answer-related information to candidates, all copyright acknowledgements are reproduced online in the Cambridge Assessment International Education Copyright Acknowledgements Booklet. This is produced for each series of examinations and is freely available to download at www.cambridgeinternational.org after the live examination series.

Cambridge Assessment International Education is part of Cambridge Assessment. Cambridge Assessment is the brand name of the University of Cambridge Local Examinations Syndicate (UCLES), which is a department of the University of Cambridge.

The Periodic Table of Elements

Group										
I	II	III	IV	V	VI	VII	VIII			
3 Li lithium 7	4 Be beryllium 9	1 H hydrogen 1	5 B boron 11	6 C carbon 12	7 N nitrogen 14	8 O oxygen 16	9 F fluorine 19	10 Ne neon 20		
11 Na sodium 23	12 Mg magnesium 24	Key atomic number atomic symbol name relative atomic mass		13 Al aluminium 27	14 Si silicon 28	15 P phosphorus 31	16 S sulfur 32	17 Cl chlorine 35.5	18 Ar argon 40	
19 K potassium 39	20 Ca calcium 40	21 Sc scandium 45	22 Ti titanium 48	23 V vanadium 51	24 Cr chromium 52	25 Mn manganese 55	26 Fe iron 56	27 Co cobalt 59	28 Ni nickel 59	29 Cu copper 64
37 Rb rubidium 85	38 Sr strontium 88	39 Y yttrium 89	40 Zr zirconium 91	41 Nb niobium 93	42 Mo molybdenum 96	43 Tc technetium —	44 Ru ruthenium 101	45 Rh rhodium 103	46 Pd palladium 106	47 Ag silver 108
55 Cs caesium 133	56 Ba barium 137	57–71 lanthanoids	72 Hf hafnium 178	73 Ta tantalum 181	74 W tungsten 184	75 Re rhenium 186	76 Os osmium 190	77 Ir iridium 192	78 Pt platinum 195	79 Au gold 197
87 Fr francium —	88 Ra radium —	89–103 actinoids	104 Rf rutherfordium —	105 Db dubnium —	106 Sg seaborgium —	107 Bh bohrium —	108 Hs hassium —	109 Mt meitnerium —	110 Ds darmstadtium —	111 Rg roentgenium —
			112 Cn copernicium —	113 Nh nihonium —	114 Fl flerovium —	115 Mc moscovium —	116 Lv livermorium —	117 Ts tennessine —	118 Og oganeson —	
			119 Uue unbinilium —	120 Uub unbinilium —	121 Uut ununilium —	122 Uuq ununilium —	123 Uuq ununilium —	124 Uuq ununilium —	125 Uuq ununilium —	
			126 Uuq ununilium —	127 Uuq ununilium —	128 Uuq ununilium —	129 Uuq ununilium —	130 Uuq ununilium —	131 Uuq ununilium —	132 Uuq ununilium —	
			133 Uuq ununilium —	134 Uuq ununilium —	135 Uuq ununilium —	136 Uuq ununilium —	137 Uuq ununilium —	138 Uuq ununilium —	139 Uuq ununilium —	
			140 Uuq ununilium —	141 Uuq ununilium —	142 Uuq ununilium —	143 Uuq ununilium —	144 Uuq ununilium —	145 Uuq ununilium —	146 Uuq ununilium —	
			147 Uuq ununilium —	148 Uuq ununilium —	149 Uuq ununilium —	150 Uuq ununilium —	151 Uuq ununilium —	152 Uuq ununilium —	153 Uuq ununilium —	
			154 Uuq ununilium —	155 Uuq ununilium —	156 Uuq ununilium —	157 Uuq ununilium —	158 Uuq ununilium —	159 Uuq ununilium —	160 Uuq ununilium —	
			161 Uuq ununilium —	162 Uuq ununilium —	163 Uuq ununilium —	164 Uuq ununilium —	165 Uuq ununilium —	166 Uuq ununilium —	167 Uuq ununilium —	
			168 Uuq ununilium —	169 Uuq ununilium —	170 Uuq ununilium —	171 Uuq ununilium —	172 Uuq ununilium —	173 Uuq ununilium —	174 Uuq ununilium —	
			175 Uuq ununilium —	176 Uuq ununilium —	177 Uuq ununilium —	178 Uuq ununilium —	179 Uuq ununilium —	180 Uuq ununilium —	181 Uuq ununilium —	
			182 Uuq ununilium —	183 Uuq ununilium —	184 Uuq ununilium —	185 Uuq ununilium —	186 Uuq ununilium —	187 Uuq ununilium —	188 Uuq ununilium —	
			189 Uuq ununilium —	190 Uuq ununilium —	191 Uuq ununilium —	192 Uuq ununilium —	193 Uuq ununilium —	194 Uuq ununilium —	195 Uuq ununilium —	
			196 Uuq ununilium —	197 Uuq ununilium —	198 Uuq ununilium —	199 Uuq ununilium —	200 Uuq ununilium —	201 Uuq ununilium —	202 Uuq ununilium —	
			203 Uuq ununilium —	204 Uuq ununilium —	205 Uuq ununilium —	206 Uuq ununilium —	207 Uuq ununilium —	208 Uuq ununilium —	209 Uuq ununilium —	
			210 Uuq ununilium —	211 Uuq ununilium —	212 Uuq ununilium —	213 Uuq ununilium —	214 Uuq ununilium —	215 Uuq ununilium —	216 Uuq ununilium —	
			217 Uuq ununilium —	218 Uuq ununilium —	219 Uuq ununilium —	220 Uuq ununilium —	221 Uuq ununilium —	222 Uuq ununilium —	223 Uuq ununilium —	
			224 Uuq ununilium —	225 Uuq ununilium —	226 Uuq ununilium —	227 Uuq ununilium —	228 Uuq ununilium —	229 Uuq ununilium —	230 Uuq ununilium —	
			231 Uuq ununilium —	232 Uuq ununilium —	233 Uuq ununilium —	234 Uuq ununilium —	235 Uuq ununilium —	236 Uuq ununilium —	237 Uuq ununilium —	
			238 Uuq ununilium —	239 Uuq ununilium —	240 Uuq ununilium —	241 Uuq ununilium —	242 Uuq ununilium —	243 Uuq ununilium —	244 Uuq ununilium —	
			245 Uuq ununilium —	246 Uuq ununilium —	247 Uuq ununilium —	248 Uuq ununilium —	249 Uuq ununilium —	250 Uuq ununilium —	251 Uuq ununilium —	
			252 Uuq ununilium —	253 Uuq ununilium —	254 Uuq ununilium —	255 Uuq ununilium —	256 Uuq ununilium —	257 Uuq ununilium —	258 Uuq ununilium —	
			259 Uuq ununilium —	260 Uuq ununilium —	261 Uuq ununilium —	262 Uuq ununilium —	263 Uuq ununilium —	264 Uuq ununilium —	265 Uuq ununilium —	
			266 Uuq ununilium —	267 Uuq ununilium —	268 Uuq ununilium —	269 Uuq ununilium —	270 Uuq ununilium —	271 Uuq ununilium —	272 Uuq ununilium —	
			273 Uuq ununilium —	274 Uuq ununilium —	275 Uuq ununilium —	276 Uuq ununilium —	277 Uuq ununilium —	278 Uuq ununilium —	279 Uuq ununilium —	
			280 Uuq ununilium —	281 Uuq ununilium —	282 Uuq ununilium —	283 Uuq ununilium —	284 Uuq ununilium —	285 Uuq ununilium —	286 Uuq ununilium —	
			287 Uuq ununilium —	288 Uuq ununilium —	289 Uuq ununilium —	290 Uuq ununilium —	291 Uuq ununilium —	292 Uuq ununilium —	293 Uuq ununilium —	
			294 Uuq ununilium —	295 Uuq ununilium —	296 Uuq ununilium —	297 Uuq ununilium —	298 Uuq ununilium —	299 Uuq ununilium —	300 Uuq ununilium —	
			301 Uuq ununilium —	302 Uuq ununilium —	303 Uuq ununilium —	304 Uuq ununilium —	305 Uuq ununilium —	306 Uuq ununilium —	307 Uuq ununilium —	
			308 Uuq ununilium —	309 Uuq ununilium —	310 Uuq ununilium —	311 Uuq ununilium —	312 Uuq ununilium —	313 Uuq ununilium —	314 Uuq ununilium —	
			315 Uuq ununilium —	316 Uuq ununilium —	317 Uuq ununilium —	318 Uuq ununilium —	319 Uuq ununilium —	320 Uuq ununilium —	321 Uuq ununilium —	
			322 Uuq ununilium —	323 Uuq ununilium —	324 Uuq ununilium —	325 Uuq ununilium —	326 Uuq ununilium —	327 Uuq ununilium —	328 Uuq ununilium —	
			329 Uuq ununilium —	330 Uuq ununilium —	331 Uuq ununilium —	332 Uuq ununilium —	333 Uuq ununilium —	334 Uuq ununilium —	335 Uuq ununilium —	
			336 Uuq ununilium —	337 Uuq ununilium —	338 Uuq ununilium —	339 Uuq ununilium —	340 Uuq ununilium —	341 Uuq ununilium —	342 Uuq ununilium —	
			343 Uuq ununilium —	344 Uuq ununilium —	345 Uuq ununilium —	346 Uuq ununilium —	347 Uuq ununilium —	348 Uuq ununilium —	349 Uuq ununilium —	
			350 Uuq ununilium —	351 Uuq ununilium —	352 Uuq ununilium —	353 Uuq ununilium —	354 Uuq ununilium —	355 Uuq ununilium —	356 Uuq ununilium —	
			357 Uuq ununilium —	358 Uuq ununilium —	359 Uuq ununilium —	360 Uuq ununilium —	361 Uuq ununilium —	362 Uuq ununilium —	363 Uuq ununilium —	
			364 Uuq ununilium —	365 Uuq ununilium —	366 Uuq ununilium —	367 Uuq ununilium —	368 Uuq ununilium —	369 Uuq ununilium —	370 Uuq ununilium —	
			371 Uuq ununilium —	372 Uuq ununilium —	373 Uuq ununilium —	374 Uuq ununilium —	375 Uuq ununilium —	376 Uuq ununilium —	377 Uuq ununilium —	
			378 Uuq ununilium —	379 Uuq ununilium —	380 Uuq ununilium —	381 Uuq ununilium —	382 Uuq ununilium —	383 Uuq ununilium —	384 Uuq ununilium —	
			385 Uuq ununilium —	386 Uuq ununilium —	387 Uuq ununilium —	388 Uuq ununilium —	389 Uuq ununilium —	390 Uuq ununilium —	391 Uuq ununilium —	
			392 Uuq ununilium —	393 Uuq ununilium —	394 Uuq ununilium —	395 Uuq ununilium —	396 Uuq ununilium —	397 Uuq ununilium —	398 Uuq ununilium —	
			399 Uuq ununilium —	400 Uuq ununilium —	401 Uuq ununilium —	402 Uuq ununilium —	403 Uuq ununilium —	404 Uuq ununilium —	405 Uuq ununilium —	
			406 Uuq ununilium —	407 Uuq ununilium —	408 Uuq ununilium —	409 Uuq ununilium —	410 Uuq ununilium —	411 Uuq ununilium —	412 Uuq ununilium —	
			413 Uuq ununilium —	414 Uuq ununilium —	415 Uuq ununilium —	416 Uuq ununilium —	417 Uuq ununilium —	418 Uuq ununilium —	419 Uuq ununilium —	
			420 Uuq ununilium —	421 Uuq ununilium —	422 Uuq ununilium —	423 Uuq ununilium —	424 Uuq ununilium —	425 Uuq ununilium —	426 Uuq ununilium —	
			427 Uuq ununilium —	428 Uuq ununilium —	429 Uuq ununilium —	430 Uuq ununilium —	431 Uuq ununilium —	432 Uuq ununilium —	433 Uuq ununilium —	
			434 Uuq ununilium —	435 Uuq ununilium —	436 Uuq ununilium —	437 Uuq ununilium —	438 Uuq ununilium —	439 Uuq ununilium —	440 Uuq ununilium —	
			441 Uuq ununilium —	442 Uuq ununilium —	443 Uuq ununilium —	444 Uuq ununilium —	445 Uuq ununilium —	446 Uuq ununilium —	447 Uuq ununilium —	
			448 Uuq ununilium —	449 Uuq ununilium —	450 Uuq ununilium —	451 Uuq ununilium —	452 Uuq ununilium —	453 Uuq ununilium —	454 Uuq ununilium —	
			455 Uuq ununilium —	456 						