

CANDIDATE
NAME

CENTER
NUMBER

--	--	--	--	--

CANDIDATE
NUMBER

--	--	--	--

* 6 4 4 4 4 4 5 8 7 2 2 *

CO-ORDINATED SCIENCES (DOUBLE)(US)

0442/33

Paper 3 (Extended)

May/June 2014

2 hours

Candidates answer on the Question Paper.

No Additional Materials are required.

READ THESE INSTRUCTIONS FIRST

Write your Center number, candidate number and name on all the work you hand in.

Write in dark blue or black pen.

You may use an HB pencil for any diagrams or graphs.

Do not use staples, paper clips, glue or correction fluid.

DO NOT WRITE IN ANY BARCODES.

Answer **all** questions.

Electronic calculators may be used.

You may lose marks if you do not show your working or if you do not use appropriate units.

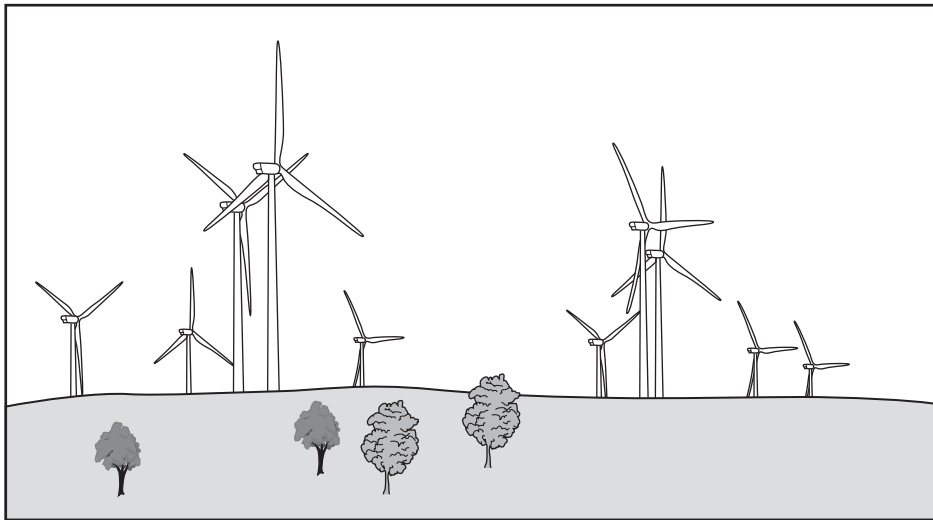
A copy of the Periodic Table is printed on page 32.

At the end of the examination, fasten all your work securely together.

The number of marks is given in brackets [] at the end of each question or part question.

This document consists of **32** printed pages.

- 1 (a) Wind farms are areas of land containing many wind turbines. Four thousand wind turbines can produce the same power as one coal-fired power station.



- (i) State **one** advantage and **one** disadvantage of using wind, rather than coal, to generate electrical power.

advantage

.....

disadvantage

..... [1]

- (ii) On a particular day, the power input to a wind turbine is 1500 kW. The turbine produces 900 kW of electrical power.

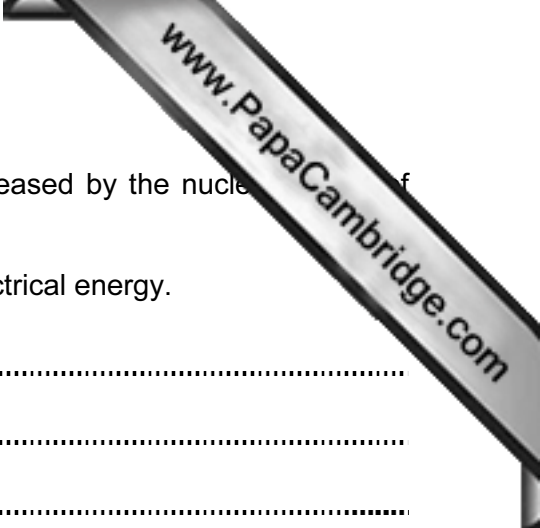
Calculate the efficiency of the wind turbine.

State any formula that you use and show your working. State your answer as a percentage.

formula

working

..... % [2]



(b) Nuclear power stations generate electricity using energy released by the nuclei of atoms.

(i) Describe the process that transforms this energy into electrical energy.

.....
.....
.....
..... [3]

(ii) Energy is released in the Sun by a different nuclear process.

Name this process.

..... [1]

(c) A wind farm generates 33MW of electrical power. The wind farm is connected to a transmission line at a potential difference of 132kV.

Calculate the current produced by the wind farm.

State the formula that you use and show your working.

formula

working

..... A [2]

- (d) Fig. 1.1 shows how the electricity cables carrying electricity from a wind farm are supported by pylons.

The cables hang loosely in hot weather.

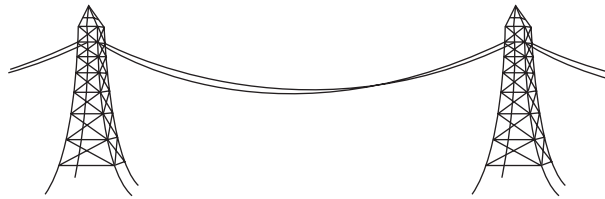


Fig. 1.1

Explain why the cables must hang loosely in hot weather.

.....

.....

..... [2]

- (e) A scientist investigates six different wires used in making these cables. He wants to determine the resistance of each piece of wire.

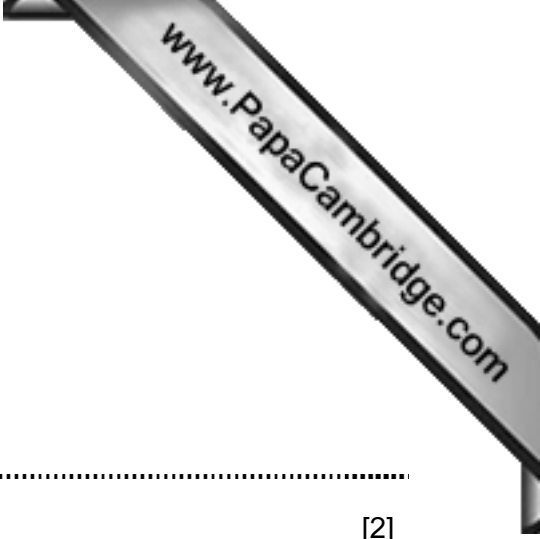
wire	metal composition	length / m	cross-sectional area / cm ²
A	copper	10	0.1
B	nichrome	10	0.1
C	copper	20	0.1
D	nichrome	20	0.1
E	copper	10	0.2
F	nichrome	20	0.2

- (i) Which wire, **A** or **E**, will have the greater resistance?

Explain your answer.

wire because

..... [1]



(ii) Wire **B** has a greater resistance than wire **A**.

Which wire, **B**, **C**, **D**, **E** or **F**, has the greatest resistance?

Explain your answer.

wire

explanation

..... [2]

(iii) The resistance of wire **B** is 0.15Ω .

Calculate the current passing through the wire when a voltage of 12V is applied across it.

State the formula that you use and show your working.

formula

working

..... A [2]

2 (a) Fig. 2.1 shows some of the cells that line the trachea.

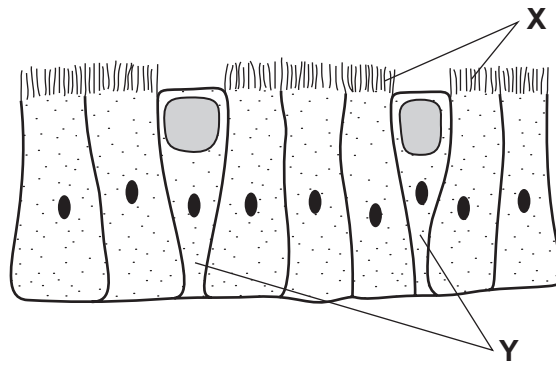


Fig. 2.1

(i) Name the structures labeled X.

..... [1]

(ii) Explain how these structures, and the cells labeled Y, protect the gas exchange system from pathogens.

.....
.....
.....
..... [3]

(b) Tobacco smoke can have a damaging effect on the working of the cells in Fig. 2.1.

(i) Name a component of tobacco smoke that damages these cells.

..... [1]

(ii) Describe how this component of tobacco smoke affects the structures labeled X and the cells labeled Y.

structures labeled X

.....
.....

cells labeled Y

.....
.....

[2]



Please turn over for Question 3.

- 3 (a) Dutch metal is an alloy of copper and zinc that has been formed into very thin sheets. When a small piece of Dutch metal is dropped into a container filled with chlorine, it goes into flame and two compounds are produced as shown in Fig. 3.1.

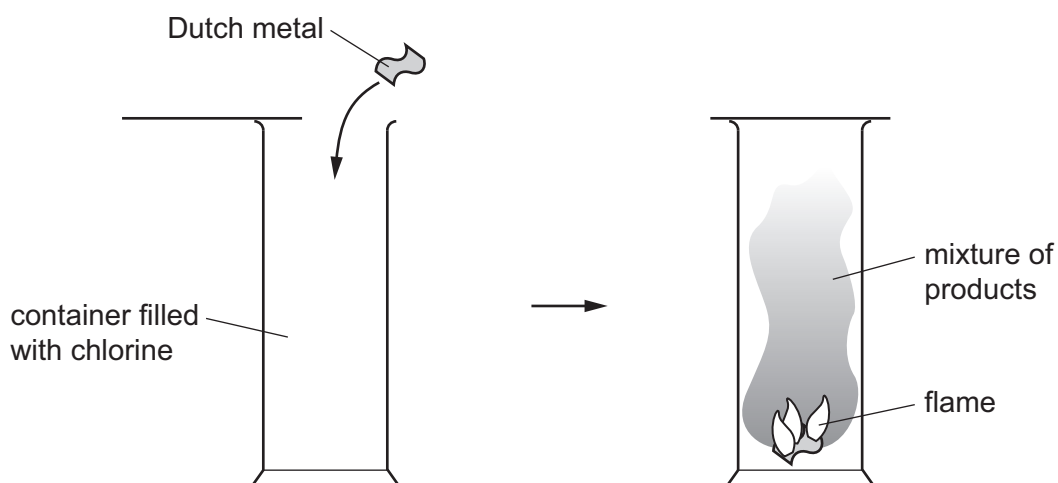


Fig. 3.1

- (i) State the meaning of the term *alloy*.

.....
 [1]

- (ii) State the physical property of metals that allows them to be formed into very thin sheets.

..... [1]

- (iii) Suggest the names of the **two** compounds formed when Dutch metal reacts with chlorine.

1

2

[1]

- (b) Sodium burns in oxygen gas to produce a white solid that contains the ions of sodium and oxygen. This white solid is sodium oxide.

Fig. 3.2 shows a sodium atom and an oxygen atom.

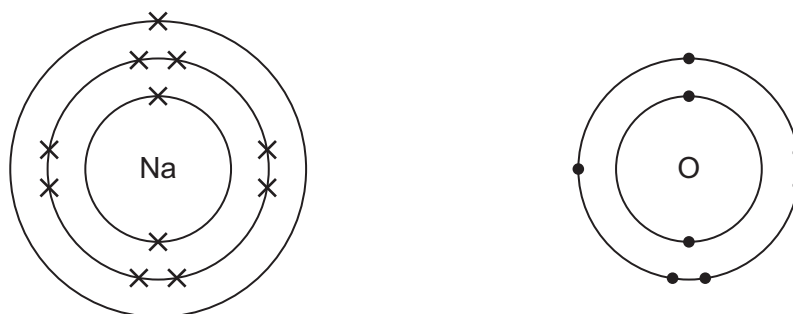


Fig. 3.2

Predict and explain, in terms of changes in electronic structure, the chemical formula of sodium oxide. You may wish to draw diagrams to help you to answer this question.

.....
 [3]

- (c) Phosphorus is a non metallic element containing molecules that have the formula P_4 .

The chemical formula of phosphorus oxide shows four phosphorus atoms bonded with ten oxygen atoms.

Construct a balanced symbolic equation for the reaction between phosphorus and oxygen gas to form phosphorus oxide.

..... [3]

- 4 Fig. 4.1 shows a river with nearby agricultural land. Large amounts of artificial fertiliser have been sprayed onto the agricultural land.

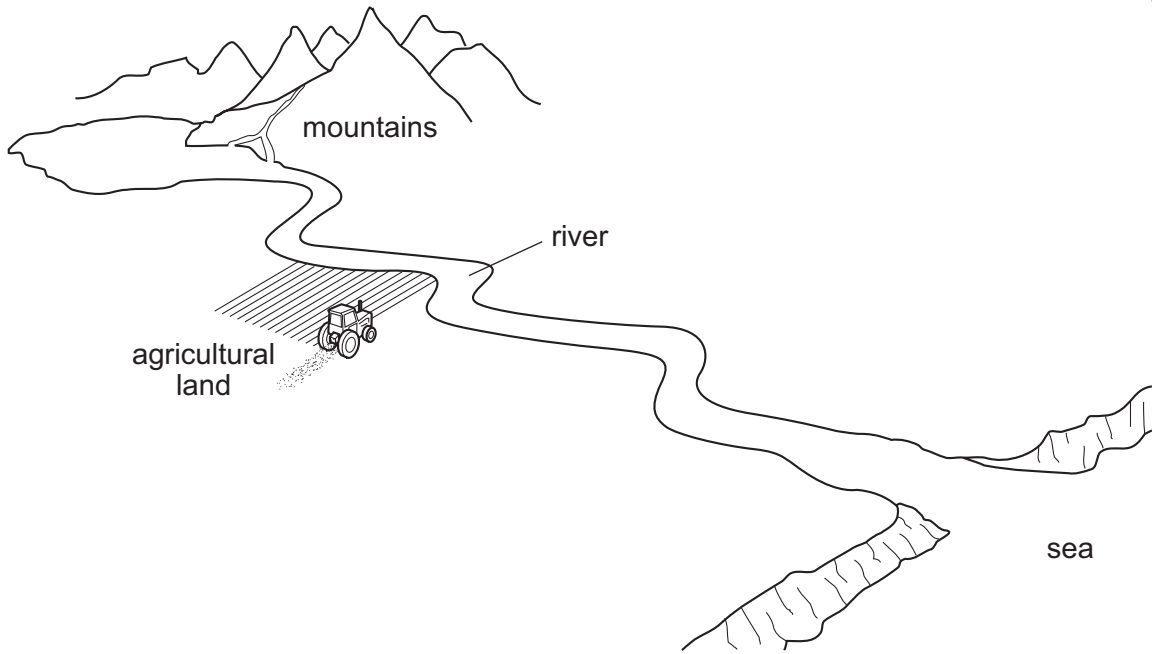


Fig. 4.1

- (a) Name a mineral ion that would be present in the fertilizer.

..... [1]

- (b) Describe how mineral ions in the fertilizer might reach the river.

.....
 [1]

- (c) When large amounts of mineral ions are added to a river a sequence of effects on the living organisms can take place.

Explain the effects on the following organisms

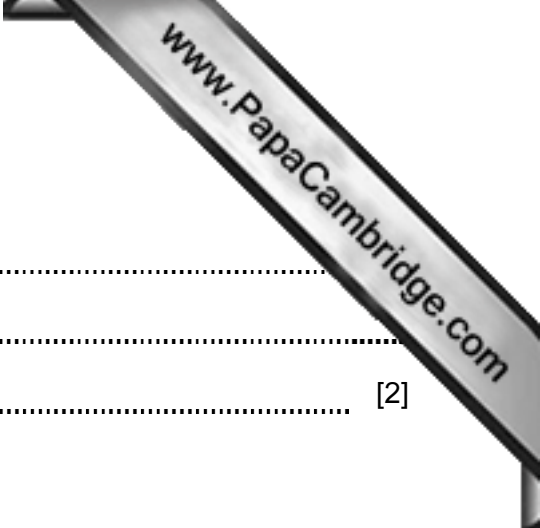
- (i) algae (photosynthesizing microorganisms),

.....
 [1]

- (ii) submerged aquatic plants,

.....

 [2]



(iii) bacteria,

.....
.....
..... [2]

(iv) fish.

.....
..... [1]

(d) If the farmer uses artificial fertilizer, suggest **two** ways in which the effect of the fertilizer on the river could be reduced.

1
.....
2
..... [2]

5 (a) Two bar magnets **A** and **B** are shown in Fig. 5.1. Magnet **A** is moved towards magnet

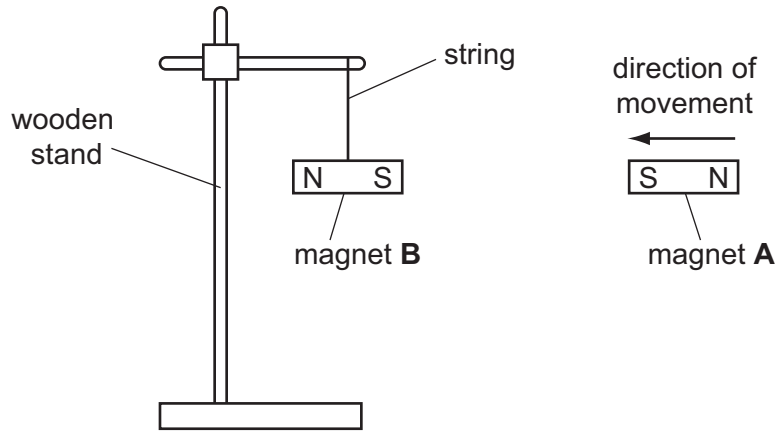


Fig. 5.1

(i) Describe and explain what happens to magnet **B** as magnet **A** is moved towards it.

.....
 [1]

(ii) Magnet **A** is replaced by a piece of unmagnetized iron **C**.

Predict what happens as the unmagnetized iron **C** is moved towards **B**.

Explain your prediction.

.....

 [2]

(b) Fig. 5.2 shows two plastic balls hanging from threads. Both balls are electrically charged.

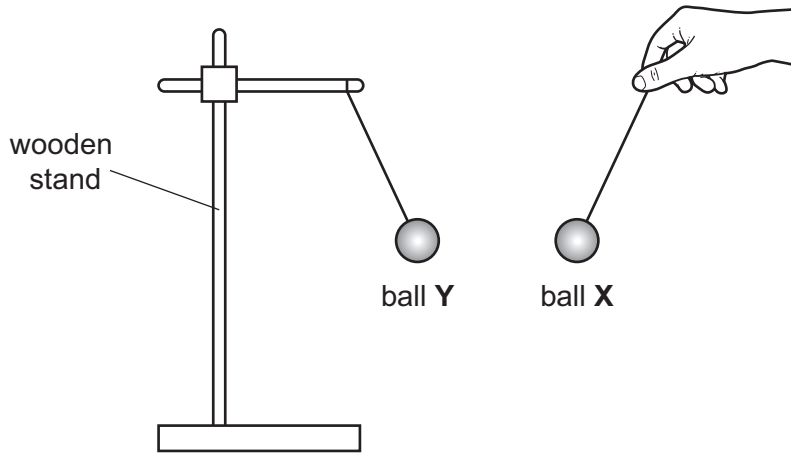


Fig. 5.2

Ball Y is negatively charged.

(i) State the charge on ball X. Give a reason for your answer.

.....
..... [1]

(ii) Describe and explain how ball Y has been given a negative charge.

.....
..... [2]

(iii) There is an electric field between ball X and ball Y.

State what happens to an electrical charge placed in this field.

.....
..... [1]

- (c) The mass of ball **X** is 3.97 g (3.97×10^{-3} kg). The volume of ball **X** is 4.17 cm³ (4.17 × 10⁻⁶ m³).

Calculate the density of the plastic used to make ball **X**.

State the formula that you use and show your working. State the units of your answer.

formula

working

density = unit = [3]

Please turn over for Question 6.

6 (a) Fig. 6.1 shows diagrams P, Q and R, of three molecules containing carbon atoms

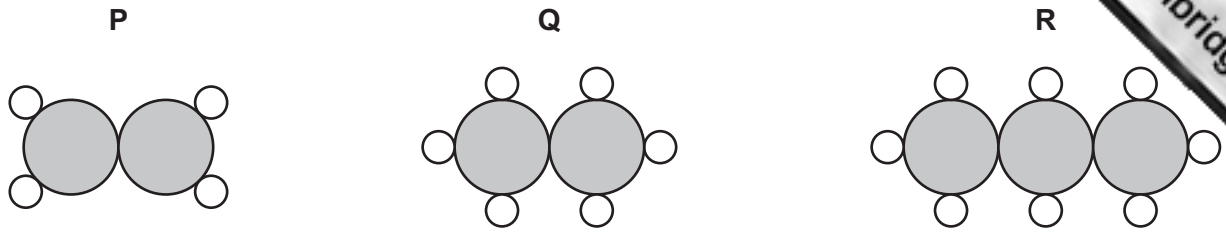


Fig. 6.1

(i) Using the Periodic Table on page 32, state the number of electrons in one atom of carbon.

Explain how you obtained your answer.

number of electrons

explanation

..... [2]

(ii) State and explain which diagram, P, Q or R, represents one molecule of ethane.

diagram

explanation

..... [2]

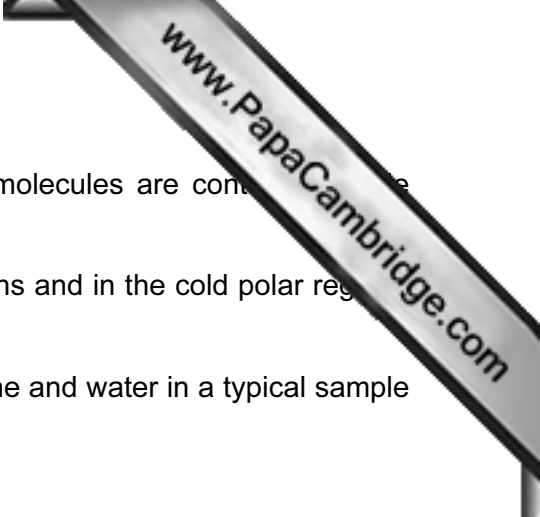
(iii) Name the type of chemical bonding found in all of the compounds shown in Fig. 6.1.

Give a reason for your answer.

type of bonding

reason

..... [2]



- (b) Methane hydrate is a solid mixture in which methane molecules are contained within ice crystals.

Large amounts of methane hydrate exist under the oceans and in the cold polar regions of the Earth.

Table 6.1 shows the relative numbers of moles of methane and water in a typical sample of methane hydrate.

Table 6.1

substance	chemical formula	relative number of moles
methane	CH ₄	1.00
water (ice)	H ₂ O	5.75

- (i) The mass of 1.00 moles of methane is 16.0g.

Calculate the mass of 5.75 moles of water.

Show your working.

..... [2]

- (ii) Calculate the mass of methane hydrate that contains 1.00 moles of methane.

..... [1]

- (iii) When the temperature of methane hydrate increases, the ice melts and releases the methane.

Some scientists think that methane hydrate might have a serious effect on global warming.

Suggest how the breakdown of methane hydrate might affect global warming.

.....

 [2]

7 An electric motor inflates a car tire by pumping air into it.

(a) Explain, in terms of particles, how the air causes the tire to inflate.

.....

.....

.....

..... [3]

(b) Fig. 7.1 shows a simple electric motor.

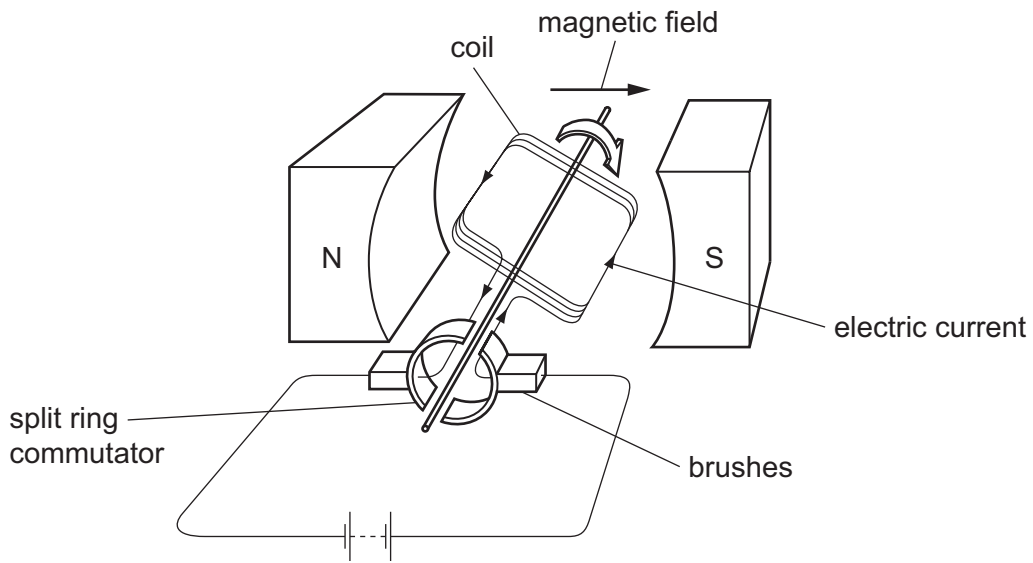


Fig. 7.1

Explain why the coil turns when an electric current passes through it.

.....

.....

.....

.....

..... [4]

Please turn over for Question 8.

- 8 After its flowers have been pollinated, a sweetcorn (maize) plant produces a corncob (Fig. 8.1).

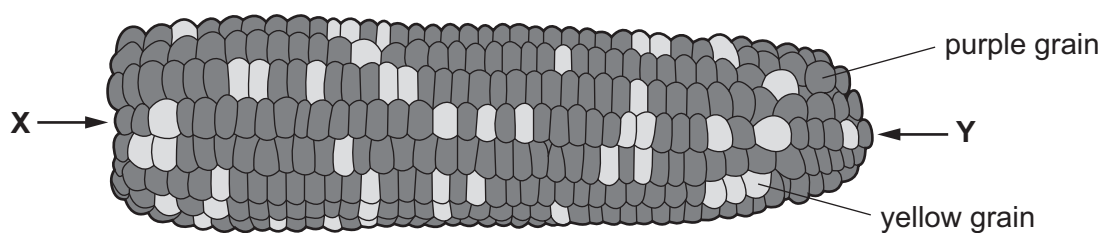


Fig. 8.1

Each of the individual grains on the corncob results from the fertilization of a different egg cell in the female parent. The pollen all came from the same (male) parent.

Some of the grains are purple (dark) in color and others yellow (light) in color.

- (a) The variation in grain color is an example of discontinuous variation.

Explain why this variation is described as *discontinuous*.

.....

 [2]

- (b) (i) In the row of grains labeled X to Y, count the number of purple (dark) grains and the number of yellow (light) grains.

number of purple (dark) grains
 number of yellow (light) grains [1]

- (ii) State, to the nearest whole number, the ratio of purple grains to yellow grains.

..... [1]

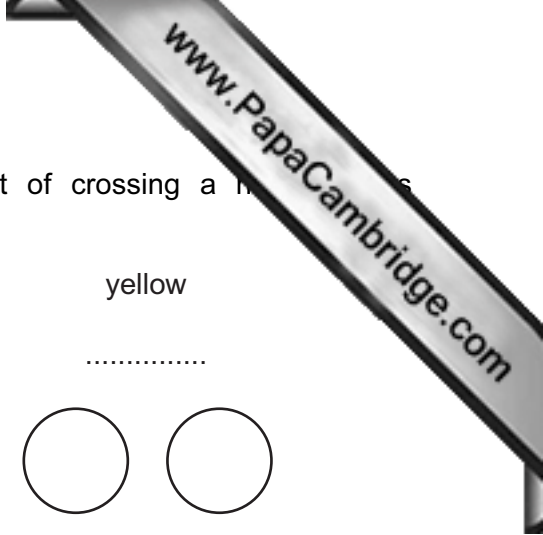
- (c) The allele for purple color (G) is dominant and the allele for yellow color (g) is recessive.

- (i) What would be the color of a sweetcorn grain with the genotype Gg?

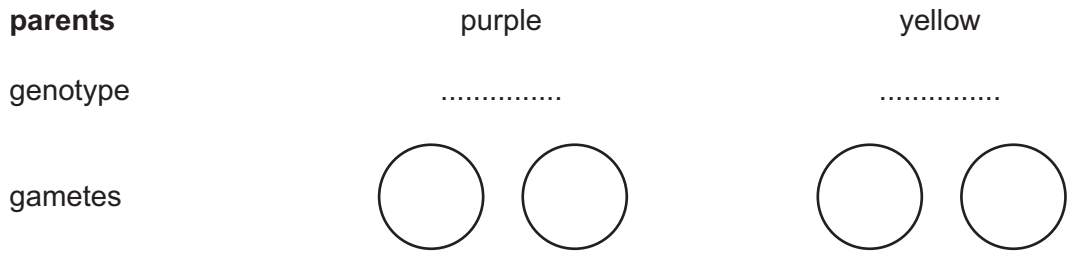
..... [1]

- (ii) Use the ratio of purple grains and yellow grains in (b)(ii) to state the genotypes of the parents.

genotypes and [2]



(d) Complete the genetic diagram below to show the result of crossing a purple-grained sweetcorn plant with a yellow-grained sweetcorn plant.



offspring		
genotype
grain color
ratio	

[5]

- 9 (a) Fig. 9.1 shows air passing into the engine of a car, and a mixture of exhaust (waste) gas being released.

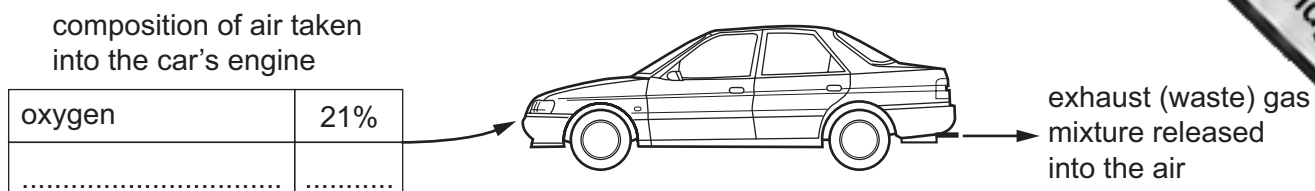


Fig. 9.1

- (i) Complete the table in Fig. 9.1 to show the name and percentage of the main gas in air. [2]

- (ii) Name **one** gas, other than carbon dioxide, in the mixture of exhaust gases which causes air pollution.

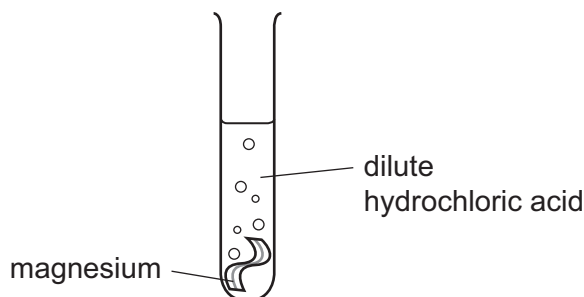
State **one** harmful effect that this gas has in the environment.

gas

harmful effect

..... [2]

- (b) Hydrogen gas is released when magnesium reacts with dilute hydrochloric acid.



- (i) Describe the test for hydrogen gas.

..... [2]

- (ii) State the **word** equation for the reaction between magnesium and dilute hydrochloric acid.

..... [1]

- (c) Fig. 9.2 shows the apparatus a student used to measure the temperature of the reaction mixture when magnesium powder reacted with dilute hydrochloric acid.

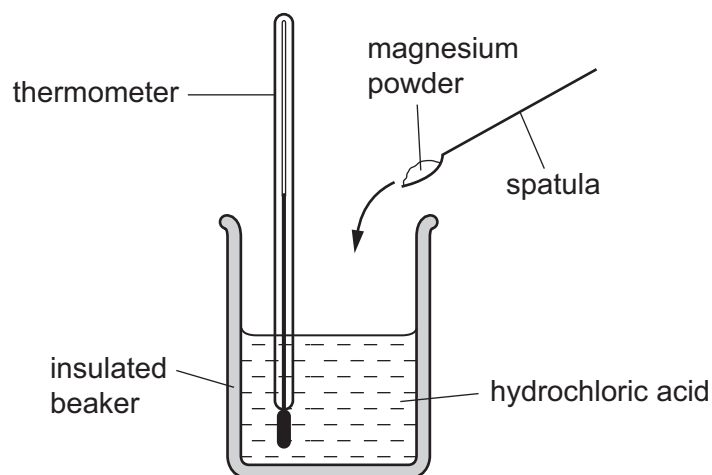


Fig. 9.2

The student repeated the experiment using different masses of magnesium powder.

After each experiment he rinsed out the insulated beaker and then refilled it using the same volume of 1.0 mol/dm^3 hydrochloric acid. His results are shown in Fig. 9.3.

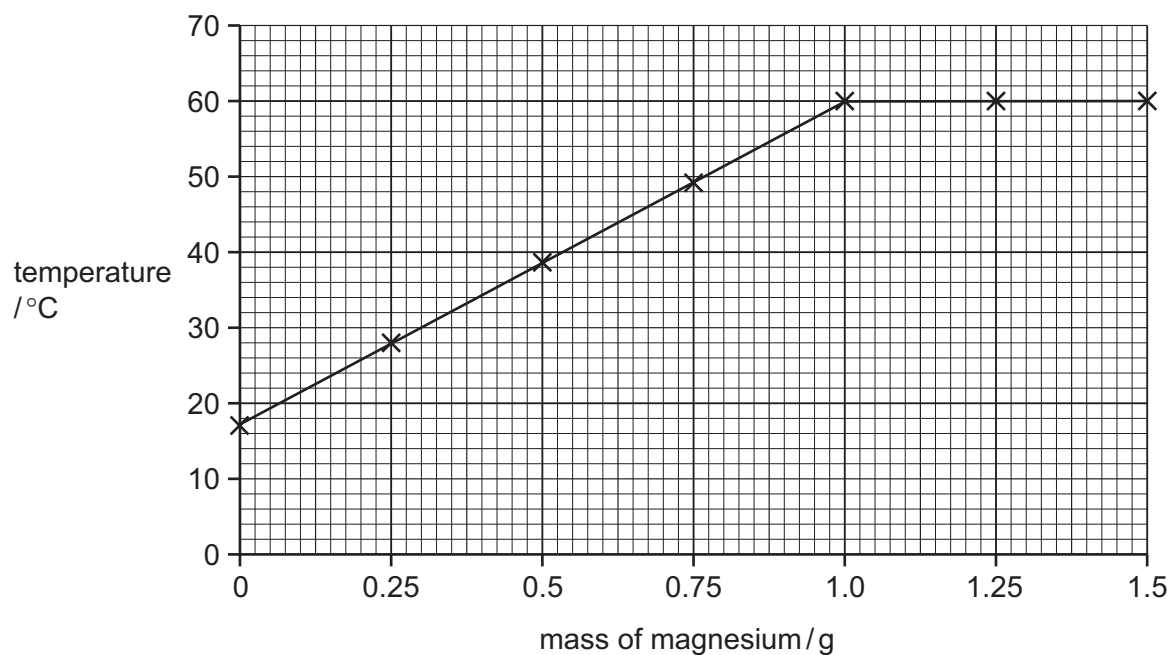


Fig. 9.3

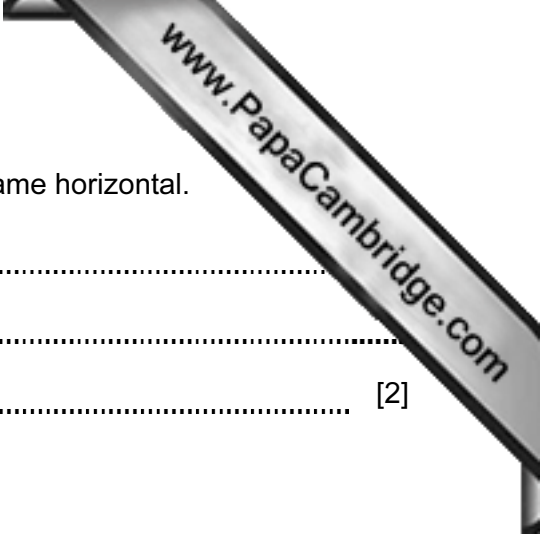
- (i) Explain, in terms of energy, why the temperature of the reaction mixture increases when magnesium powder is added to dilute hydrochloric acid.

.....

.....

.....

..... [2]



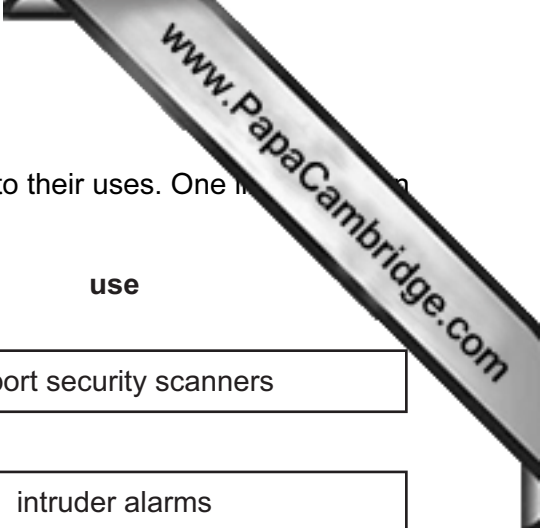
(ii) Suggest why in this experiment the graph eventually became horizontal.

.....

.....

..... [2]

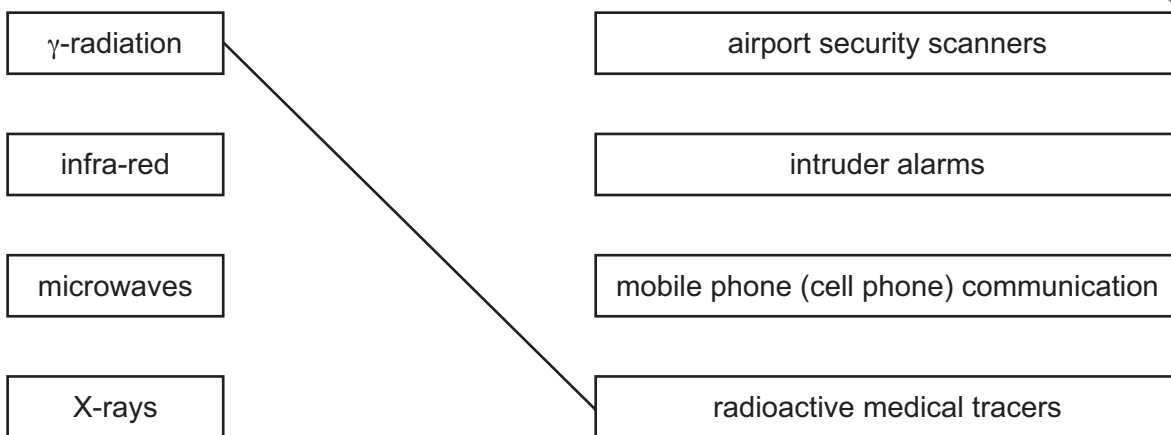
Please turn over for Question 10.



10 (a) Draw lines to link the waves in the electromagnetic spectrum to their uses. One link has already been drawn for you.

electromagnetic wave

use



[1]

(b) Different waves in the electromagnetic spectrum have different wavelengths and frequencies.

State the meaning of the terms *frequency* and *wavelength*.

You may use diagrams to help your explanation.

frequency

.....

.....

.....

wavelength

.....

.....

.....

[2]

(c) α -radiation, β -radiation and γ -radiation are three radioactive emissions.

(i) Place the three radiations in order of their ionizing ability, placing the most ionizing

most ionizing

.....

least ionizing

[1]

(ii) Fig. 10.1 shows α , β , and γ radiations passing through a magnetic field.

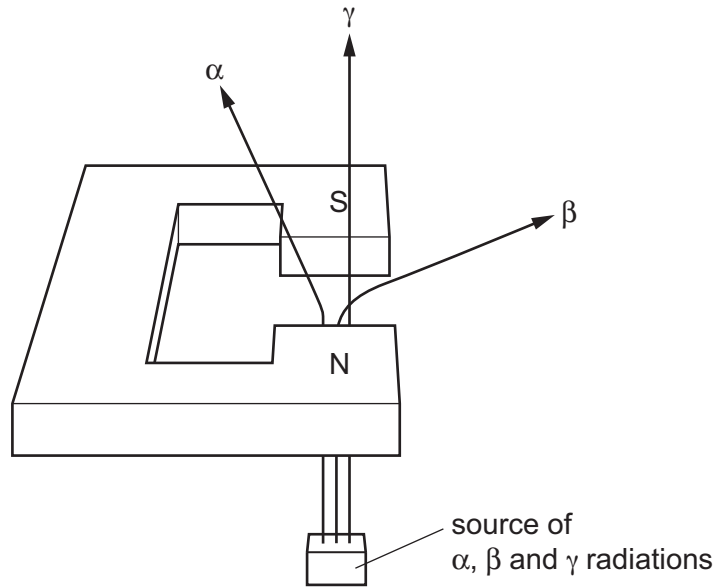


Fig. 10.1

Explain the results.

.....

 [3]

11 (a) Define *osmosis*.

.....

.....

.....

..... [3]

(b) A piece of plant tissue was placed in a concentrated sugar solution on a microscope slide. Fig. 11.1 shows the appearance of three of the cells from this tissue after they had been in the sugar solution for one hour.

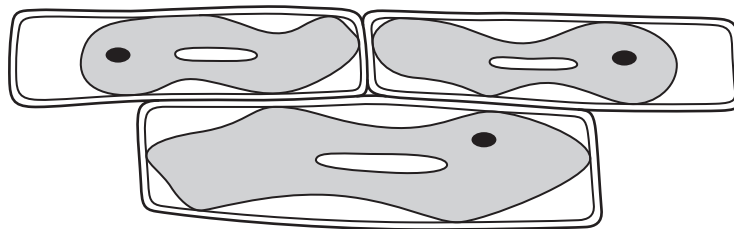


Fig. 11.1

(i) Describe the effect, as shown in Fig. 11.1, that the sugar solution has had on the cells.

.....

..... [1]

(ii) Explain this effect in terms of osmosis.

.....

.....

..... [2]

(iii) Complete Fig. 11.2, to show how the cells would appear if they had been placed in water, instead of in a concentrated sugar solution.

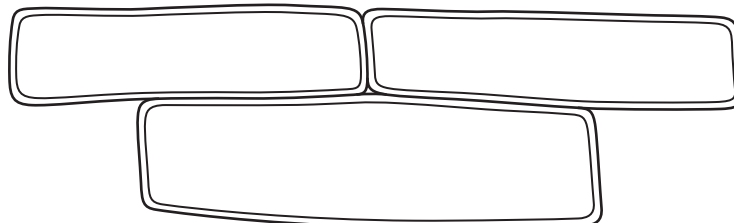
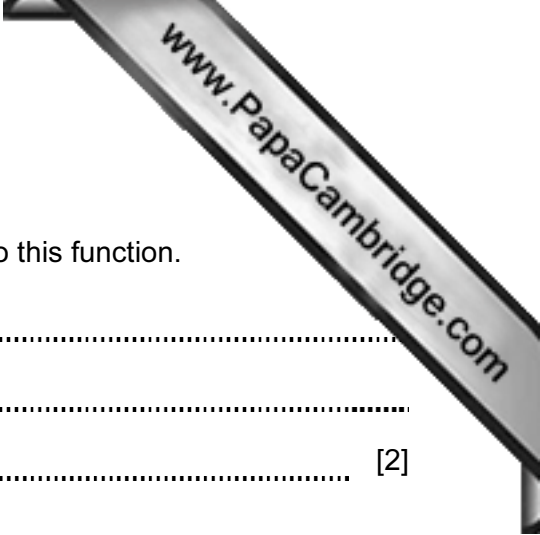


Fig. 11.2

[2]



(c) Plants absorb water by osmosis into their root hair cells.

(i) Explain how the structure of the root hair cells is related to this function.

.....

.....

..... [2]

(ii) State **one** other function of root hair cells.

..... [1]

12 (a) Fig. 12.1 shows some of the particles present in a mixture of gases.

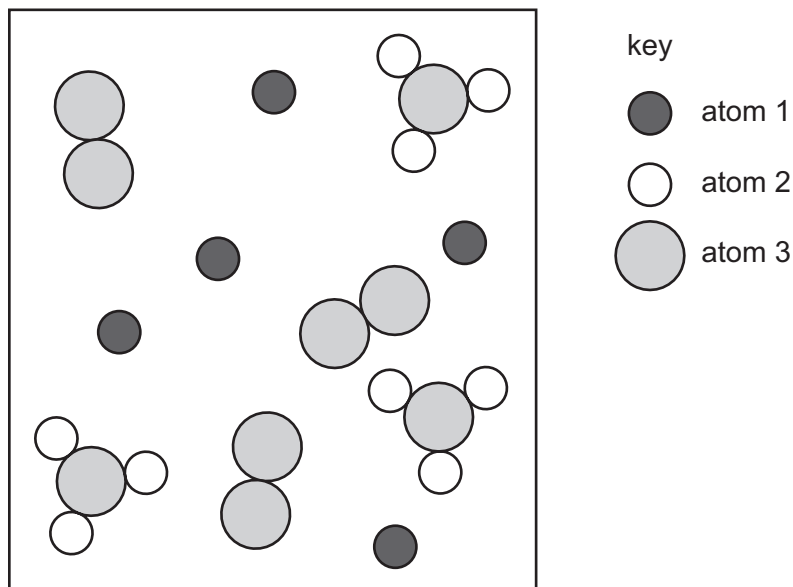


Fig. 12.1

(i) State the number of different gases that are contained in the mixture shown in Fig. 12.1.

..... [1]

(ii) On Fig. 12.1 draw a label line to a molecule of a **compound**. Label this molecule **C**. [1]

(iii) Explain your answer to (ii).

.....
 [1]

(b) Name the family of metals that includes cobalt (proton number 27) and nickel (proton number 28).

..... [1]

(c) Fig. 12.2 shows a simplified diagram of the industrial process used to produce aluminium.

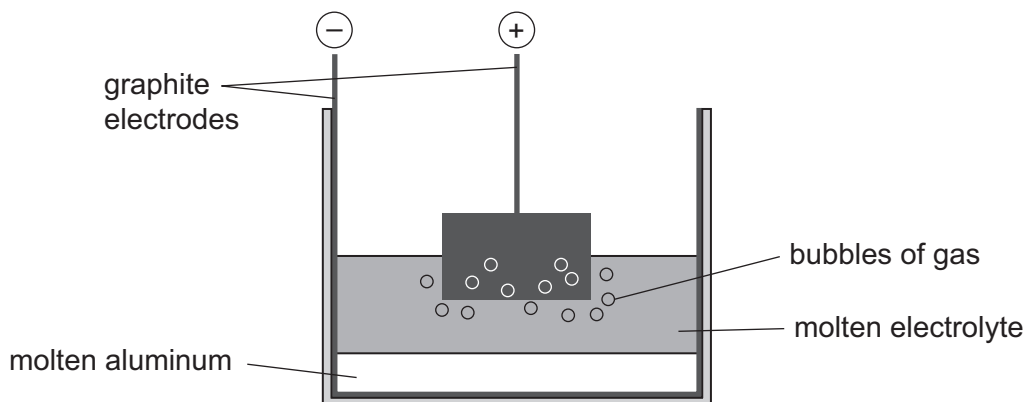


Fig. 12.2

(i) Name the **two** substances that are melted together to form the electrolyte.

1

2

[2]

(ii) Name **one** gas that bubbles from the surface of the anode.

..... [1]

(iii) Describe what happens on the surface of the cathode to convert aluminium ions, Al^{3+} , to aluminium atoms.

.....

.....

..... [2]

DATA SHEET
The Periodic Table of the Elements

		Group																			
		I	II	III	IV	V	VI	VII	0												
		1 H Hydrogen 1																			
7	9	Li Lithium 3	Be Beryllium 4																		
23	24	Na Sodium 11	Mg Magnesium 12																		
39	40	K Potassium 19	Ca Calcium 20	45 Sc Scandium 21	48 Ti Titanium 22	51 V Vanadium 23	52 Cr Chromium 24	55 Mn Manganese 25	56 Fe Iron 26	59 Co Cobalt 27	59 Ni Nickel 28	64 Cu Copper 29	65 Zn Zinc 30	70 Ga Gallium 31	73 Ge Germanium 32	75 As Arsenic 33	79 Se Selenium 34	80 Br Bromine 35	84 Kr Krypton 36		
85	88	Rb Rubidium 37	Sr Strontium 38	89 Y Yttrium 39	91 Zr Zirconium 40	93 Nb Niobium 41	96 Mo Molybdenum 42	101 Ru Ruthenium 44	101 Rh Rhodium 45	103 Rh Rhodium 45	106 Pd Palladium 46	108 Ag Silver 47	112 Cd Cadmium 48	115 In Indium 49	119 Sn Tin 50	122 Sb Antimony 51	128 Te Tellurium 52	127 I Iodine 53	131 Xe Xenon 54		
133	137	Cs Caesium 55	Ba Barium 56	139 La Lanthanum 57	178 Hf Hafnium 72	181 Ta Tantalum 73	184 W Tungsten 74	190 Os Osmium 76	192 Ir Iridium 77	195 Pt Platinum 78	197 Au Gold 79	201 Hg Mercury 80	204 Tl Thallium 81	207 Pb Lead 82	209 Bi Bismuth 83	210 Po Polonium 84	210 At Astatine 85	210 Rn Radon 86			
87	226	Fr Francium 87	Ra Radium 88	227 Ac Actinium 89																	
		*58-71 Lanthanoid series †90-103 Actinoid series																			
		140 Ce Cerium 58	141 Pr Praseodymium 59	144 Nd Neodymium 60	146 Pm Promethium 61	150 Sm Samarium 62	152 Eu Europium 63	157 Gd Gadolinium 64	162 Dy Dysprosium 66	165 Ho Holmium 67	167 Er Erbium 68	169 Tm Thulium 69	173 Yb Ytterbium 70	175 Lu Lutetium 71							
		232 Th Thorium 90	238 Pa Protactinium 91	238 U Uranium 92	238 Np Neptunium 93	244 Pu Plutonium 94	244 Am Americium 95	244 Cm Curium 96	244 Bk Berkelium 97	244 Cf Californium 98	244 Es Einsteinium 99	244 Fm Fermium 100	244 Md Mendelevium 101	244 No Nobelium 102	244 Lr Lawrencium 103						

Key

a	X
b	

a = relative atomic mass
X = atomic symbol
b = proton (atomic) number

The volume of one mole of any gas is 24 dm³ at room temperature and pressure (r.t.p.).

Permission to reproduce items where third-party owned material protected by copyright is included has been sought and cleared where possible. Every reasonable effort has been made by the publisher (UCLES) to trace copyright holders, but if any items requiring clearance have unwittingly been included, the publisher will be pleased to make amends at the earliest possible opportunity.

Cambridge International Examinations is part of the Cambridge Assessment Group. Cambridge Assessment is the brand name of University of Cambridge Local Examinations Syndicate (UCLES), which is itself a department of the University of Cambridge.