



UNIVERSITY OF CAMBRIDGE INTERNATIONAL EXAMINATIONS  
International General Certificate of Secondary Education

CANDIDATE  
NAME

CENTRE  
NUMBER

--	--	--	--	--

CANDIDATE  
NUMBER

--	--	--	--

\* 6 5 9 7 8 1 2 8 5 7 \*

**CO-ORDINATED SCIENCES**

**0654/22**

Paper 2 (Core)

**May/June 2013**

**2 hours**

Candidates answer on the Question Paper.

No Additional Materials are required.

**READ THESE INSTRUCTIONS FIRST**

Write your Centre number, candidate number and name on all the work you hand in.

Write in dark blue or black pen.

You may use a pencil for any diagrams or graphs.

Do not use staples, paper clips, glue or correction fluid.

**DO NOT WRITE IN ANY BARCODES.**

Answer **all** questions.

Electronic calculators may be used.

You may lose marks if you do not show your working or if you do not use appropriate units.

A copy of the Periodic Table is printed on page 28.

At the end of the examination, fasten all your work securely together.

The number of marks is given in brackets [ ] at the end of each question or part question.

This document consists of **27** printed pages and **1** blank page.



- 1 (a) Fig. 1.1 shows some of the elements in Group 1 of the Periodic Table.

Li
Na
K

Fig. 1.1

- (i) Name the alkali that is produced when potassium reacts with water.

..... [1]

- (ii) Describe how the rate of reaction between water and the metals in Fig. 1.1 changes as you go down the group.

.....  
..... [1]

- (b) Fig. 1.2 shows some of the elements in Group 7 of the Periodic Table.

Cl
Br
I

Fig. 1.2

- (i) Describe how the melting point of the elements in Fig. 1.2 changes as you go down the group.

.....  
..... [1]

- (ii) A solution of potassium bromide is colourless and a solution of chlorine is almost colourless.

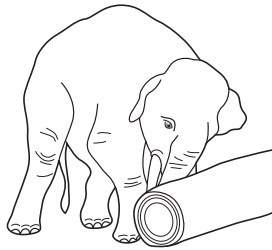
Describe and explain briefly what would be seen when these solutions are mixed.

what would be seen .....

explanation .....

.....  
..... [3]

- 2 (a) An elephant of mass 5000 kg exerts a constant force to push a tree trunk along a horizontal surface at a steady speed of 1.5 m/s.



State the **two** quantities that would need to be measured to calculate the work done by the elephant.

..... and ..... [2]

- (b) The volume of the elephant is 5 m<sup>3</sup>. Its mass is 5000 kg.

Calculate the density of the elephant.

State the formula that you use and show your working.

formula

working

..... kg/m<sup>3</sup> [2]

- (c) An elephant can communicate with other elephants using infrasound. This is a very low frequency vibration which it is usually impossible for a human to hear.

- (i) Suggest a possible frequency for this vibration and explain why you chose your answer.

frequency ..... Hz

explanation .....

.....  
..... [2]

- (ii) State the meaning of the term *frequency*.

.....  
..... [1]

- 3 Fig. 3.1 shows an animal cell, just before it divides.

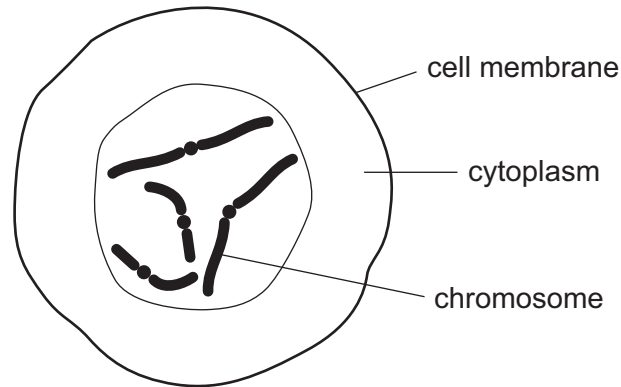


Fig. 3.1

- (a) Define the term *chromosome*.

.....

.....

..... [2]

- (b) Some cattle have horns, but other cattle do not. This is determined by a gene. The allele of the gene that produces horns, **h**, is recessive.

- (i) Complete Table 3.1 to show the phenotypes of cattle with each of the possible genotypes for this gene.

Table 3.1

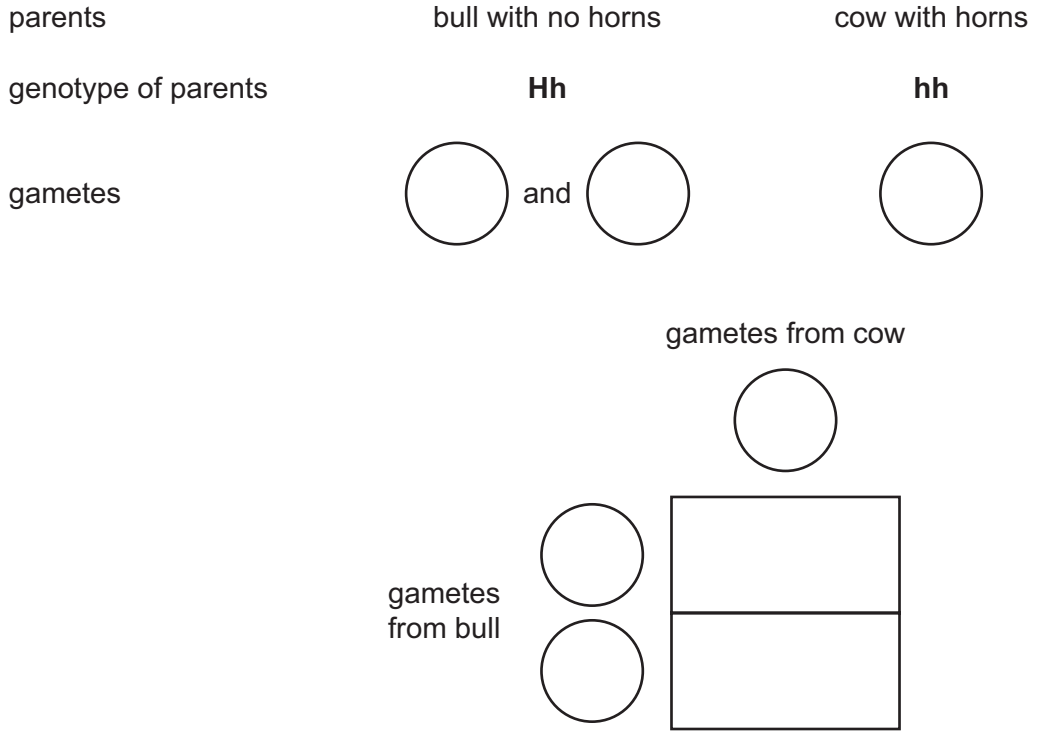
genotype	phenotype
<b>HH</b>	no horns
<b>Hh</b>	
<b>hh</b>	

[1]

- (ii) A farmer has a bull with no horns. He wants to make sure that the bull does not have the recessive allele, **h**, for horns.

He breeds the bull with a cow that has horns.

Complete the genetic diagram to show the possible offspring if the bull does have the allele for horns.



[3]

- (iii) Explain how the results of the cross can help the farmer to decide whether the bull has the allele **h** or not.

.....  
 .....  
 ..... [2]

- (iv) Cows usually give birth to one or two calves each time.

Explain why the farmer needs to cross the bull with the cow several times before he can be sure whether the bull has the allele **h** or not.

.....  
 .....  
 .....  
 ..... [2]

- 4 Fig. 4.1 shows a microwave oven.

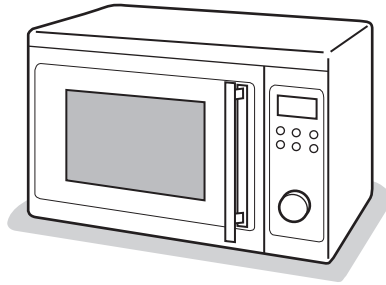


Fig. 4.1

- (a) Microwaves cook food by transferring energy to the food.

Choose words from the list to complete the sentences below. You may use each word once, more than once or not at all.

**chemical**

**conduction**

**convection**

**potential**

**radiation**

**thermal**

Microwaves are absorbed by the outer layers of food.

The microwave energy is transferred to water and fat molecules in these layers,

increasing the ..... energy of these layers.

..... energy is mostly transferred to the centre of

solid food by .....

[2]



- 5 (a) Sodium is a reactive metal that forms compounds with non-metals.
- (i) Name the compounds which are formed when sodium reacts with chlorine, .....
- oxygen. .... [1]
- (ii) Fig. 5.1 shows diagrams of a sodium atom and a chlorine atom.

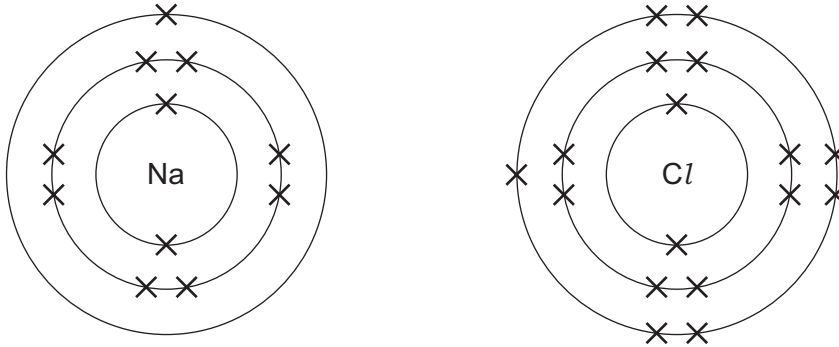


Fig. 5.1

When sodium reacts with chlorine, the atoms shown in Fig. 5.1 first change into electrically charged atoms known as ions.

Describe what happens when sodium and chlorine atoms change into ions.

.....

.....

..... [2]

- (iii) State why the ions formed by sodium and chlorine attract each other.

.....

..... [1]

- (iv) Describe **two** differences between the properties of a typical ionic compound and a typical covalent compound.

1 .....

.....

2 .....

.....

..... [2]



(b) Fig. 5.2 shows apparatus a student used to investigate the electrolysis of dilute sulfuric acid.

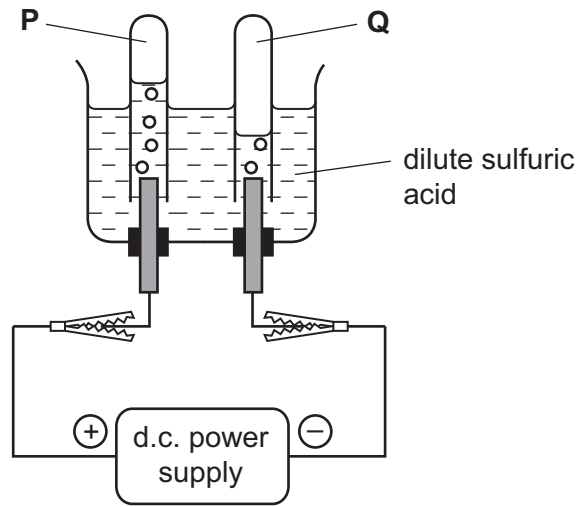


Fig. 5.2

(i) On Fig. 5.2, label the anode. [1]

(ii) Name the gases P and Q.

P .....

Q ..... [2]

(iii) Choose **one** of the gases in (ii) and describe a test for this gas.

gas .....

description of test .....

.....

..... [2]

6 Fig. 6.1 shows a section through a blood capillary.

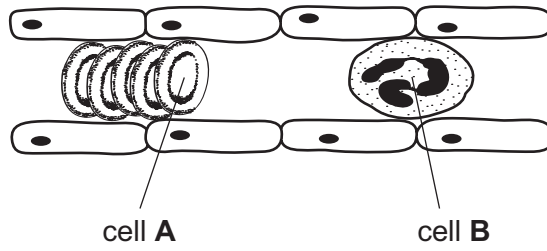


Fig. 6.1

(a) Describe how cell A transports oxygen.

.....  
.....  
.....  
..... [2]

(b) Describe the function of cell B.

.....  
.....  
.....  
..... [2]

(c) Outline the functions of a blood capillary.

.....  
.....  
.....  
..... [2]

7 (a) A resistor of  $1200\Omega$  is connected in series with another resistor of  $2400\Omega$ .

Calculate the combined resistance of these two resistors.

State the formula that you use and show your working.

formula

working

.....  $\Omega$  [2]

(b) (i) The diagrams below show the circuit symbols for three components of an electric torch (flashlight).

On the line below each diagram state the name of the component.



..... [2]

(ii) Using only these symbols draw a circuit diagram for a torch.

[1]

(c) Complete the sentences to describe the energy transfers which take place when a torch (flashlight) is used.

Choose from the words below. You may use each word once, more than once or not at all.

- |                 |                   |                |                |
|-----------------|-------------------|----------------|----------------|
| <b>chemical</b> | <b>electrical</b> | <b>kinetic</b> | <b>light</b>   |
| <b>nuclear</b>  | <b>potential</b>  | <b>sound</b>   | <b>thermal</b> |

..... energy is stored in the cells.

This is transferred into ..... energy which passes to the lamp.

The useful energy output from the lamp is ..... energy, but

much energy is wasted as ..... energy.

[2]

(d) A ray of light from the torch is reflected by a mirror. This is shown in Fig. 7.1.

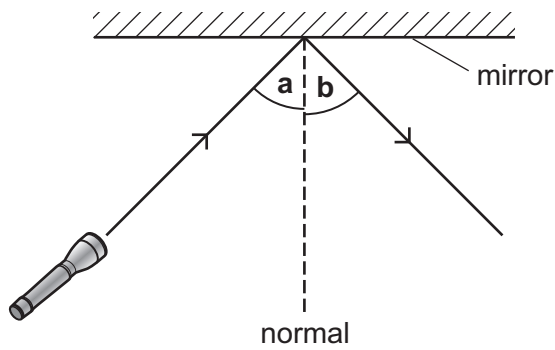


Fig. 7.1

Angle **a** has a value of  $45^\circ$ .

Name angle **b** and write down its value.

name .....

value ..... $^\circ$

[2]

- 8 (a) The ovary of a flower contains one or more ovules. The ovules contain gametes. After fertilisation, an ovule becomes a seed containing an embryo plant.

Fig. 8.1 shows a pea seed developing inside a pod.

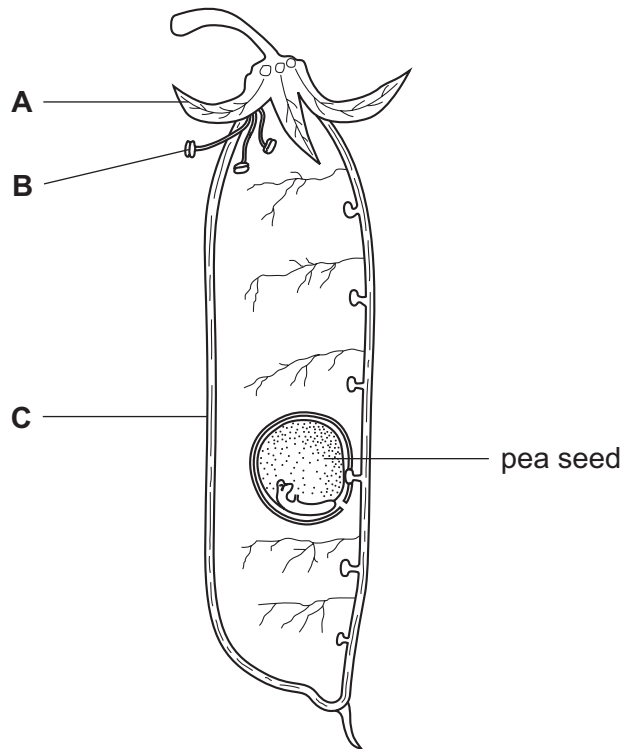


Fig.8.1

- (i) Explain the meaning of each of the following terms.

*gamete* .....

*fertilisation* .....

[2]

- (ii) Parts **A** and **B** in Fig. 8.1 remain from the flower.

State the name of part **A** and function of part **B** of these parts **in the flower**.

name of part **A** .....

function of part **B** .....

[2]

- (iii) Suggest the part of the flower from which structure **C** developed.

..... [1]

- (b) Four sets of pea seeds were placed in Petri dishes containing either damp soil or damp filter paper. They were left in different conditions, shown in Table 8.1.

**Table 8.1**

set	conditions		
<b>A</b>	damp soil	cold	dark
<b>B</b>	damp filter paper	warm	light
<b>C</b>	damp filter paper	warm	dark
<b>D</b>	damp soil	cold	light

Predict which sets of seeds will germinate.

Explain your answer.

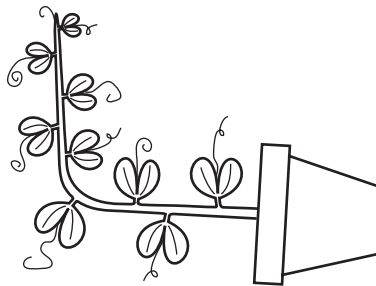
prediction .....

explanation .....

.....  
..... [3]

- (c) A pea seed was planted in a pot. When the seed had grown into a young plant, the pot was placed on its side, in a room where light was coming from all sides.

Fig. 8.2 shows the young pea plant three days after the pot had been placed on its side.



**Fig. 8.2**

- (i) Name the response shown by the pea plant in Fig. 8.2.

..... [2]



For  
inert's

(ii) Suggest how this response will help the plant to reproduce sexually.

.....

.....

.....

.....

.....

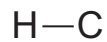
.....

..... [3]

- 9 (a) (i) Explain why hydrogen and carbon are described as elements, but hydrocarbons such as methane and ethane are described as compounds.

.....  
 .....  
 .....  
 ..... [2]

- (ii) Complete the diagram below to show one molecule of methane.



[2]

- (iii) Name the material found in the Earth that is the main source of methane.

..... [1]

- (b) Ethene is a colourless gas made of hydrocarbon molecules.

Fig. 9.2 shows diagrams of four hydrocarbon molecules, **W**, **X**, **Y** and **Z**.

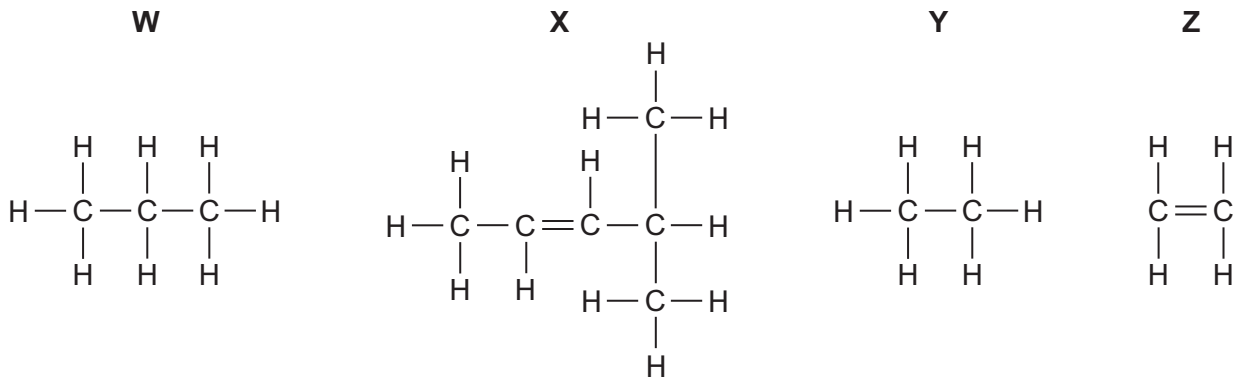
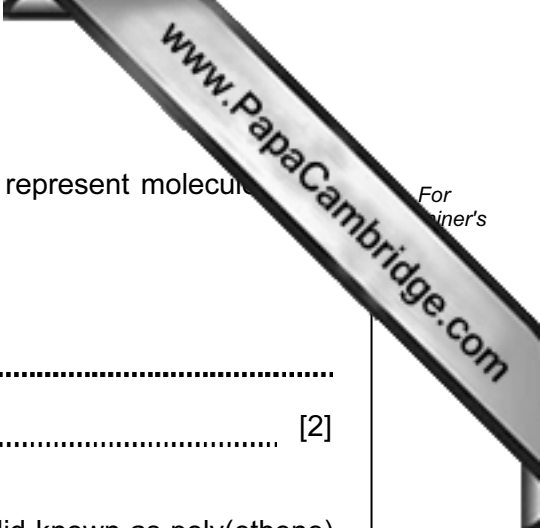


Fig. 9.2

- (i) State which diagram, **W**, **X**, **Y** or **Z**, represents one molecule of ethene.

..... [1]





(ii) State and explain which of the diagrams, **W**, **X**, **Y** or **Z**, represent molecules that are **unsaturated**.

diagrams .....

explanation .....

..... [2]

(c) When gaseous ethene is heated and pressurised, a white solid known as poly(ethene) is produced.

(i) Describe briefly what occurs when ethene molecules react to form poly(ethene). You may wish to draw a simple diagram of a poly(ethene) molecule, using the symbol **E** to represent ethene.

.....

.....

..... [2]

(ii) State the full name of the type of chemical reaction that occurs to form poly(ethene).

..... [2]

10 (a) Draw a straight line from each radiation to its correct use.

radiation	used for
$\gamma$ (gamma) rays	killing cancer cells
X-rays	night vision glasses
	photographing bones

[2]

(b) X-rays and  $\gamma$ -rays are both examples of ionising radiation.

Explain what is meant by the term *ionising radiation*.

.....

..... [1]

(c) Some countries use nuclear fission in electricity power stations.

What is meant by the term *nuclear fission*?

.....

..... [2]

- (d) The stages that take place in a nuclear power station generating electricity are in Table 10.1 below.

Put the stages in the correct sequence by adding numbers 1, 3, 5 and 7 to the right hand column.

**Table 10.1**

stage	sequence
A chain reaction happens in the core.	
A generator is turned.	
A turbine turns.	<b>6</b>
Electrical energy is generated.	<b>8</b>
Steam is produced.	
Thermal energy is produced.	<b>2</b>
Thermal energy is removed from core.	
Water is heated.	<b>4</b>

[3]

- (e) Which of these statements about the generation of electricity from nuclear fuel are correct?

Tick (✓) the **two** correct statements.

no carbon dioxide is produced

no dangerous waste is produced

no fossil fuels are used

no problems with the radioactive waste

no thermal energy is wasted

[2]

- (f) A teacher demonstrated how the count rate detected by a Geiger-Müller tube depends on the distance between the front of the tube and a radioactive  $\alpha$  (alpha) source.

Fig. 10.1 shows how the equipment was set up.

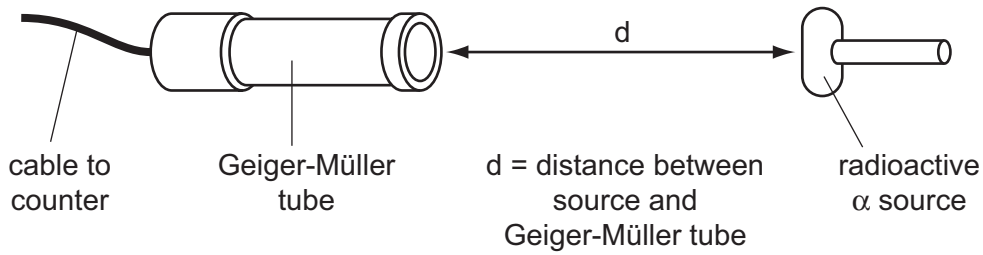


Fig. 10.1

Fig. 10.2 shows a graph of the results of the experiment.

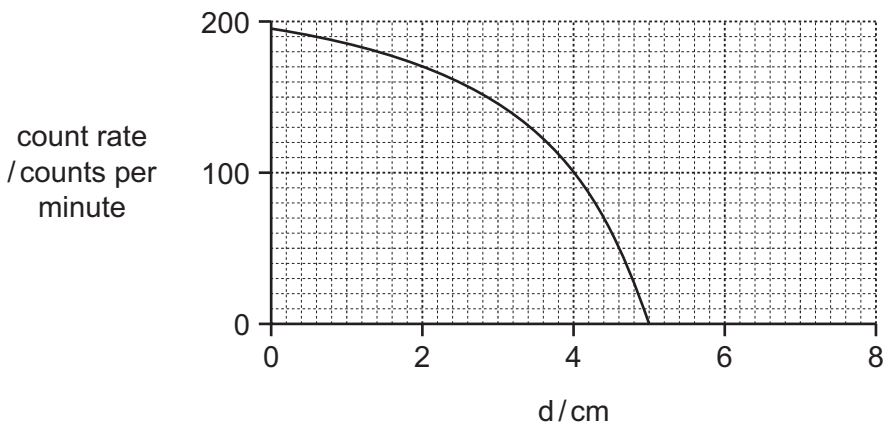


Fig. 10.2

- (i) State the range of the alpha particles. .... cm [1]  
 (ii) Describe how you would use the apparatus to obtain these results.

.....  
 .....  
 .....  
 ..... [3]

(iii) Before carrying out the experiment the teacher discussed how to reduce exposure to radiation.

Which idea below would **not** help reduce the radiation exposure of the teacher during the experiment? Explain your answer.

**idea 1** Hold the source with long tongs and wear gloves.

**idea 2** Place a lead shield between the source and the teacher.

**idea 3** Wear a photographic badge that detects radiation.

idea ..... because .....

.....

..... [2]

11 Fig. 11.1 shows a food chain. The arrows show how energy flows from one organism to another, along the chain.

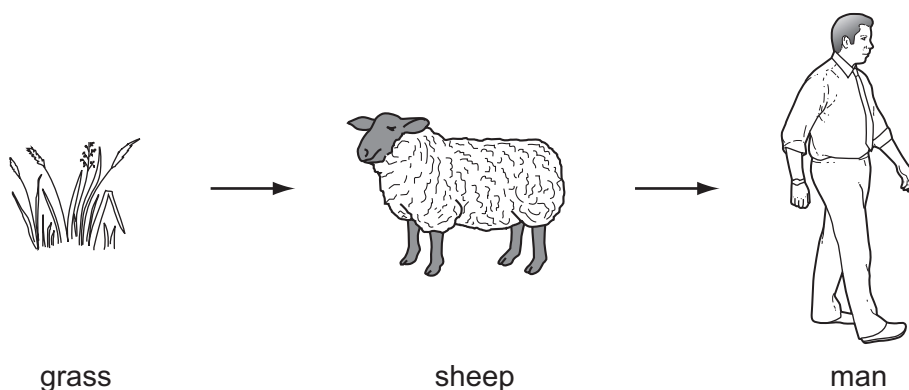


Fig. 11.1

(a) Energy enters the food chain as sunlight. Plant leaves use this energy to make food.

(i) Name the substance in the leaves of a plant that absorbs this energy.

..... [1]

(ii) Name the **two** raw materials that the plant uses to make food.

1 ..... 2 ..... [2]

(iii) Name the gas released from plant leaves during this process.

..... [1]

(b) A sheep is a herbivore.

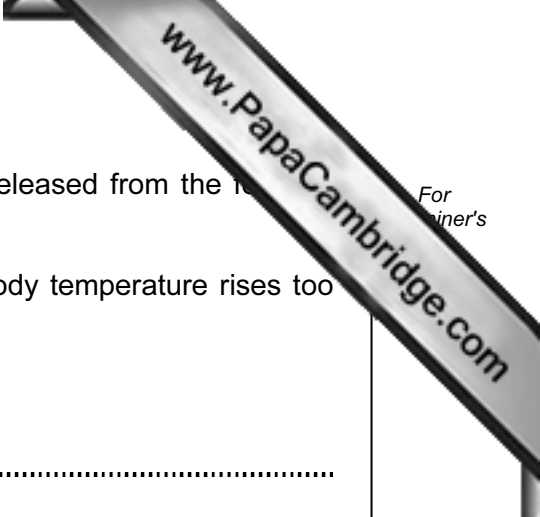
Define the term *herbivore*.

.....  
..... [2]

(c) Meat from the sheep contains protein.

Describe the importance of protein in the diet.

.....  
.....  
..... [2]



(d) In the cells of the plant, sheep and man, useful energy is released from the respiration. Some of the energy is released as heat.

Explain why the following changes occur when the man's body temperature rises too high.

The arterioles near the surface of his skin dilate.

.....

.....

.....

.....

.....

His sweat glands produce more sweat.

.....

.....

.....

.....

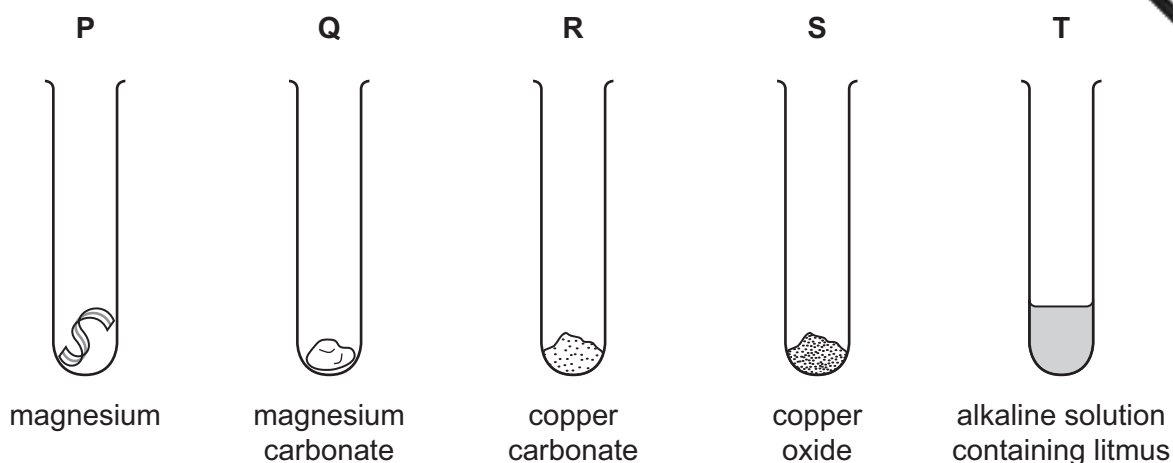
.....

[4]





- 12 (a) A student added a solution of the same dilute acid to each of the test-tubes shown in Fig. 12.1.



**Fig. 12.1**

Complete Table 12.1 by matching the test-tubes, **P**, **Q**, **R**, **S** and **T**, with the observations which are made when the dilute acid reacts with the contents.

Some of the observations could apply to more than one of the test-tubes. You may use each letter once, more than once or not at all.

**Table 12.1**

observations	test-tube(s)
The mixture turns red when excess acid has been added.	
A colourless gas is given off.	
A blue solution is formed.	
A colourless gas which pops when ignited is given off.	

[4]

- (b) The student used the apparatus shown in Fig. 12.2 to investigate neutralisation reactions involving three acids, **A**, **B** and **C**.

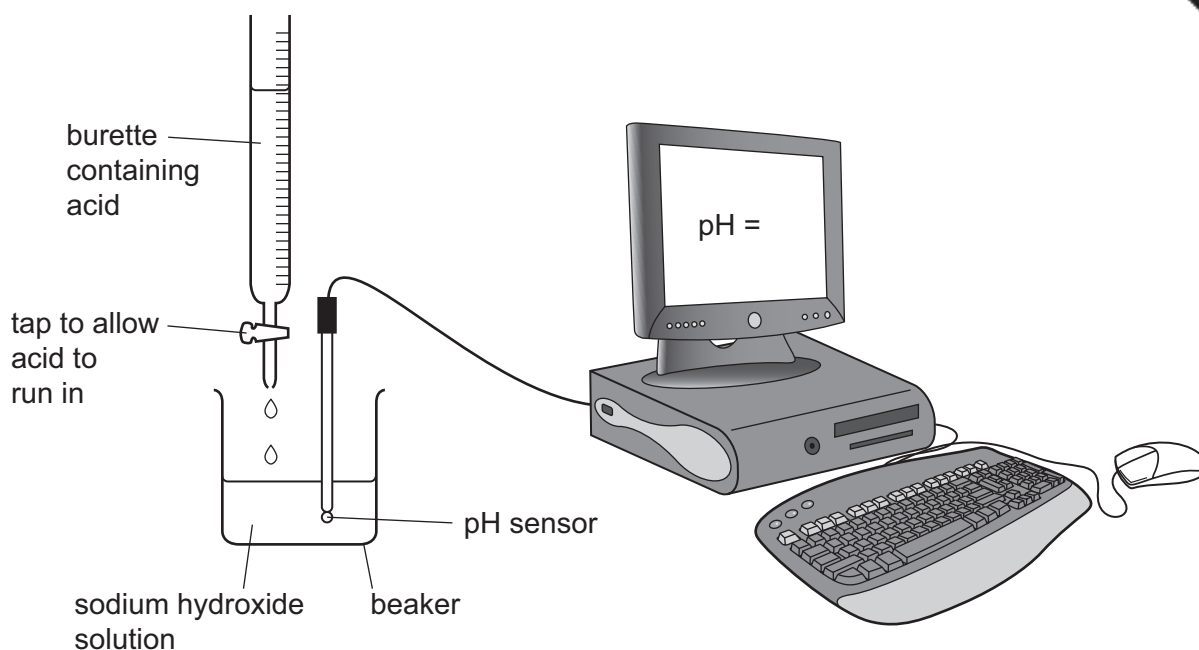


Fig. 12.2

In each experiment,  $25.0\text{ cm}^3$  of the same solution of sodium hydroxide were placed into a beaker. The tap on the burette was opened and acid was added slowly.

The measurements made by the pH sensor were displayed on the computer screen.

Some of the measurements from the three experiments are shown in Table 12.2.

Table 12.2

acid	source of acid	volume required to produce a neutral mixture / $\text{cm}^3$
<b>A</b>	sample taken from an acidic lake	42.0
<b>B</b>	sample taken from a car battery	15.0
<b>C</b>	acid from a chemical laboratory	60.0

- (i) Suggest a possible pH value of the alkali before any acid was added.

..... [1]

- (ii) State, with a reason, which acid **A**, **B** or **C**, had the highest concentration.

acid .....

reason .....

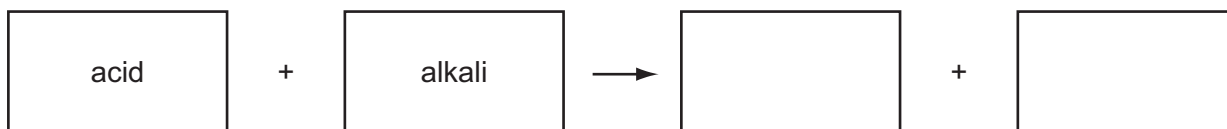
..... [1]

- (iii) The student noticed that in all three experiments, the temperature of the mixture increased as the acid was added.

Suggest why the temperature increased.

.....  
 ..... [1]

- (iv) Complete the general word equation for the reaction which occurs between an acid and an alkali.



[2]

- (v) Sample **A** was taken from an acidic lake. Much of the acidity of the acidic lake is caused by sulfur dioxide gas dissolving and reacting with lake water.

State **two** possible sources of the sulfur dioxide, one natural and one the result of human activity.

natural .....

human activity .....

..... [2]

**DATA SHEET**  
**The Periodic Table of the Elements**

		Group																																																																																																																																																																																																																																																																																																																																																																																																																																																																																																																																																																																																																																																																																																																																																																																																																																																																																																																																																
		I	II	III	IV	V	VI	VII	0																																																																																																																																																																																																																																																																																																																																																																																																																																																																																																																																																																																																																																																																																																																																																																																																																																																																																																																																									
		1 <b>H</b> Hydrogen 1																																																																																																																																																																																																																																																																																																																																																																																																																																																																																																																																																																																																																																																																																																																																																																																																																																																																																																																																																
		4 <b>He</b> Helium 2																																																																																																																																																																																																																																																																																																																																																																																																																																																																																																																																																																																																																																																																																																																																																																																																																																																																																																																																																
7	9	3	4	5	6	7	8	9	10	11	12	13	14	15	16	17	18	19	20																																																																																																																																																																																																																																																																																																																																																																																																																																																																																																																																																																																																																																																																																																																																																																																																																																																																																																																															
<b>Li</b> Lithium	<b>Be</b> Beryllium	<b>B</b> Boron	<b>C</b> Carbon	<b>N</b> Nitrogen	<b>O</b> Oxygen	<b>F</b> Fluorine	<b>Ne</b> Neon	<b>Na</b> Sodium	<b>Mg</b> Magnesium	<b>Al</b> Aluminium	<b>Si</b> Silicon	<b>P</b> Phosphorus	<b>S</b> Sulfur	<b>Cl</b> Chlorine	<b>Ar</b> Argon	<b>K</b> Potassium	<b>Ca</b> Calcium	<b>Sc</b> Scandium	<b>Ti</b> Titanium	<b>V</b> Vanadium	<b>Cr</b> Chromium	<b>Mn</b> Manganese	<b>Fe</b> Iron	<b>Co</b> Cobalt	<b>Ni</b> Nickel	<b>Cu</b> Copper	<b>Zn</b> Zinc	<b>Ga</b> Gallium	<b>Ge</b> Germanium	<b>As</b> Arsenic	<b>Se</b> Selenium	<b>Br</b> Bromine	<b>Kr</b> Krypton																																																																																																																																																																																																																																																																																																																																																																																																																																																																																																																																																																																																																																																																																																																																																																																																																																																																																																																	
19	37	39	40	41	42	43	44	45	46	47	48	49	50	51	52	53	54	55	56	57	58	59	60	61	62	63	64	65	66	67	68	69	70	71	72	73	74	75	76	77	78	79	80	81	82	83	84	85	86																																																																																																																																																																																																																																																																																																																																																																																																																																																																																																																																																																																																																																																																																																																																																																																																																																																																																																	
<b>Rb</b> Rubidium	<b>Sr</b> Strontium	<b>Y</b> Yttrium	<b>Zr</b> Zirconium	<b>Nb</b> Niobium	<b>Mo</b> Molybdenum	<b>Tc</b> Technetium	<b>Ru</b> Ruthenium	<b>Rh</b> Rhodium	<b>Pd</b> Palladium	<b>Ag</b> Silver	<b>Cd</b> Cadmium	<b>In</b> Indium	<b>Sn</b> Tin	<b>Sb</b> Antimony	<b>Te</b> Tellurium	<b>I</b> Iodine	<b>Xe</b> Xenon	<b>Cs</b> Caesium	<b>Ba</b> Barium	<b>La</b> Lanthanum	<b>Ce</b> Cerium	<b>Pr</b> Praseodymium	<b>Nd</b> Neodymium	<b>Pm</b> Promethium	<b>Sm</b> Samarium	<b>Eu</b> Europium	<b>Gd</b> Gadolinium	<b>Tb</b> Terbium	<b>Dy</b> Dysprosium	<b>Ho</b> Holmium	<b>Er</b> Erbium	<b>Tm</b> Thulium	<b>Yb</b> Ytterbium	<b>Lu</b> Lutetium	<b>Fr</b> Francium	<b>Ra</b> Radium	<b>Ac</b> Actinium	<b>Th</b> Thorium	<b>Pa</b> Protactinium	<b>U</b> Uranium	<b>Np</b> Neptunium	<b>Pu</b> Plutonium	<b>Am</b> Americium	<b>Cm</b> Curium	<b>Bk</b> Berkelium	<b>Cf</b> Californium	<b>Es</b> Einsteinium	<b>Fm</b> Fermium	<b>Md</b> Mendelevium	<b>No</b> Nobelium	<b>Lr</b> Lawrencium																																																																																																																																																																																																																																																																																																																																																																																																																																																																																																																																																																																																																																																																																																																																																																																																																																																																																															
55	87	88	89	90	91	92	93	94	95	96	97	98	99	100	101	102	103	104	105	106	107	108	109	110	111	112	113	114	115	116	117	118	119	120	121	122	123	124	125	126	127	128	129	130	131	132	133	134	135	136	137	138	139	140	141	142	143	144	145	146	147	148	149	150	151	152	153	154	155	156	157	158	159	160	161	162	163	164	165	166	167	168	169	170	171	172	173	174	175	176	177	178	179	180	181	182	183	184	185	186	187	188	189	190	191	192	193	194	195	196	197	198	199	200	201	202	203	204	205	206	207	208	209	210	211	212	213	214	215	216	217	218	219	220	221	222	223	224	225	226	227	228	229	230	231	232	233	234	235	236	237	238	239	240	241	242	243	244	245	246	247	248	249	250	251	252	253	254	255	256	257	258	259	260	261	262	263	264	265	266	267	268	269	270	271	272	273	274	275	276	277	278	279	280	281	282	283	284	285	286	287	288	289	290	291	292	293	294	295	296	297	298	299	300	301	302	303	304	305	306	307	308	309	310	311	312	313	314	315	316	317	318	319	320	321	322	323	324	325	326	327	328	329	330	331	332	333	334	335	336	337	338	339	340	341	342	343	344	345	346	347	348	349	350	351	352	353	354	355	356	357	358	359	360	361	362	363	364	365	366	367	368	369	370	371	372	373	374	375	376	377	378	379	380	381	382	383	384	385	386	387	388	389	390	391	392	393	394	395	396	397	398	399	400	401	402	403	404	405	406	407	408	409	410	411	412	413	414	415	416	417	418	419	420	421	422	423	424	425	426	427	428	429	430	431	432	433	434	435	436	437	438	439	440	441	442	443	444	445	446	447	448	449	450	451	452	453	454	455	456	457	458	459	460	461	462	463	464	465	466	467	468	469	470	471	472	473	474	475	476	477	478	479	480	481	482	483	484	485	486	487	488	489	490	491	492	493	494	495	496	497	498	499	500	501	502	503	504	505	506	507	508	509	510	511	512	513	514	515	516	517	518	519	520	521	522	523	524	525	526	527	528	529	530	531	532	533	534	535	536	537	538	539	540	541	542	543	544	545	546	547	548	549	550	551	552	553	554	555	556	557	558	559	560	561	562	563	564	565	566	567	568	569	570	571	572	573	574	575	576	577	578	579	580	581	582	583	584	585	586	587	588	589	590	591	592	593	594	595	596	597	598	599	600	601	602	603	604	605	606	607	608	609	610	611	612	613	614	615	616	617	618	619	620	621	622	623	624	625	626	627	628	629	630	631	632	633	634	635	636	637	638	639	640	641	642	643	644	645	646	647	648	649	650	651	652	653	654	655	656	657	658	659	660	661	662	663	664	665	666	667	668	669	670	671	672	673	674	675	676	677	678	679	680	681	682	683	684	685	686	687	688	689	690	691	692	693	694	695	696	697	698	699	700	701	702	703	704	705	706	707	708	709	710	711	712	713	714	715	716	717	718	719	720	721	722	723	724	725	726	727	728	729	730	731	732	733	734	735	736	737	738	739	740	741	742	743	744	745	746	747	748	749	750	751	752	753	754	755	756	757	758	759	760	761	762	763	764	765	766	767	768	769	770	771	772	773	774	775	776	777	778	779	780	781	782	783	784	785	786	787	788	789	790	791	792	793	794	795	796	797	798	799	800	801	802	803	804	805	806	807	808	809	810	811	812	813	814	815	816	817	818	819	820	821	822	823	824	825	826	827	828	829	830	831	832	833	834	835	836	837	838	839	840	841	842	843	844	845	846	847	848	849	850	851	852	853	854	855	856	857	858	859	860	861	862	863	864	865	866	867	868	869	870	871	872	873	874	875	876	877	878	879	880	881	882	883	884	885	886	887	888	889	890	891	892	893	894	895	896	897	898	899	900	901	902	903	904	905	906	907	908	909	910	911	912	913	914	915	916	917	918	919	920	921	922	923	924	925	926	927	928	929	930	931	932	933	934	935	936	937	938	939	940	941	942	943	944	945	946	947	948	949	950	951	952	953	954	955	956	957	958	959	960	961	962	963	964	965	966	967	968	969	970	971	972	973	974	975	976	977	978	979	980	981	982	983	984	985	986	987	988	989	990	991	992	993	994	995	996	997	998	999	1000

\*58-71 Lanthanoid series  
†90-103 Actinoid series

Key  

a	<b>X</b>
b	

  
 a = relative atomic mass  
 X = atomic symbol  
 b = proton (atomic) number

The volume of one mole of any gas is 24 dm<sup>3</sup> at room temperature and pressure (r.t.p.).

Permission to reproduce items where third-party owned material protected by copyright is included has been sought and cleared where possible. Every reasonable effort has been made by the publisher (UCLES) to trace copyright holders, but if any items requiring clearance have unwittingly been included, the publisher will be pleased to make amends at the earliest possible opportunity.

University of Cambridge International Examinations is part of the Cambridge Assessment Group. Cambridge Assessment is the brand name of University of Cambridge Local Examinations Syndicate (UCLES), which is itself a department of the University of Cambridge.