

Cambridge International AS & A Level

GEOGRAPHY

9696/33

Paper 3 Advanced Physical Geography Options

October/November 2020

INSERT

1 hour 30 minutes

INFORMATION

- This insert contains all the resources referred to in the questions.
- You may annotate this insert and use the blank spaces for planning. **Do not write your answers** on the insert.



This document has **8** pages. Blank pages are indicated.

Fig. 1.1 for Question 1

Climate graph for Kampala, Uganda, Africa

Elevation 1224 m Latitude 0.35 °N

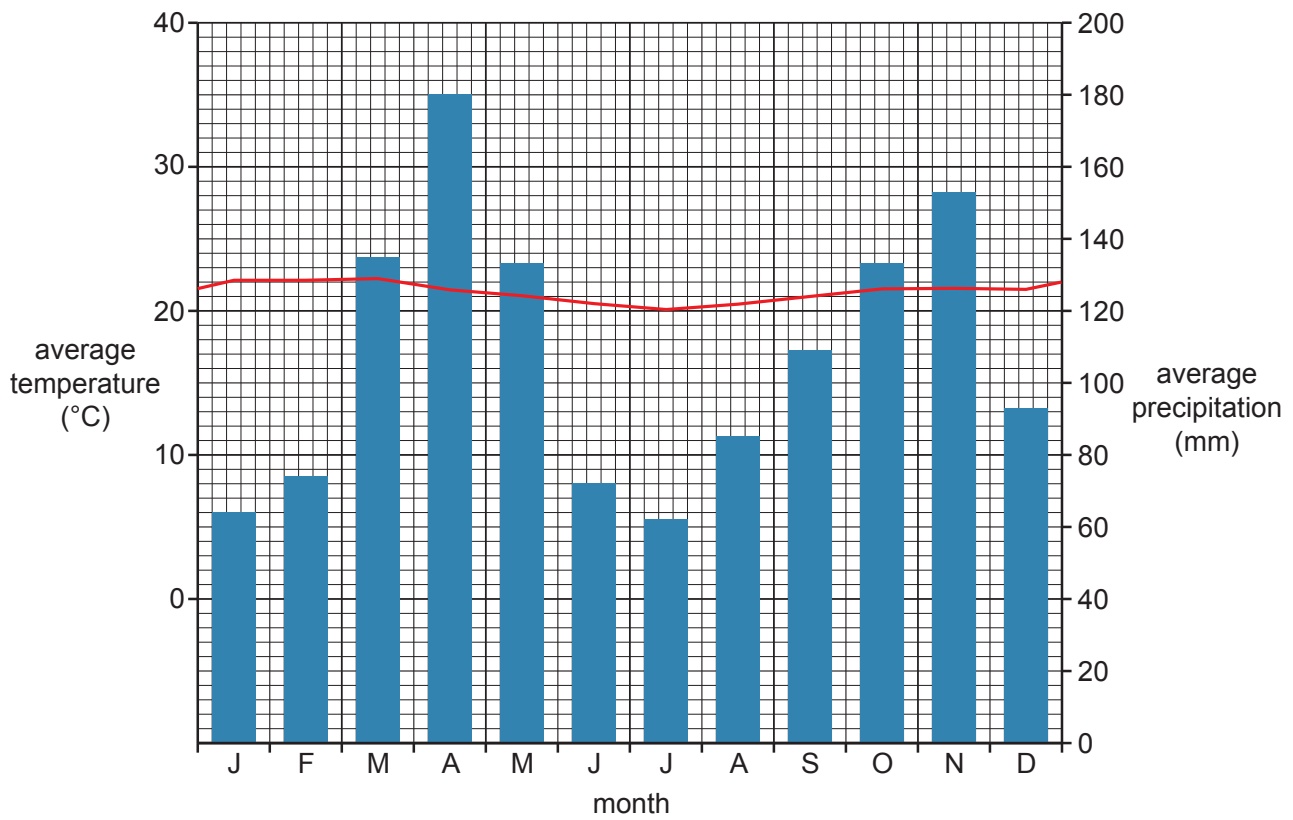
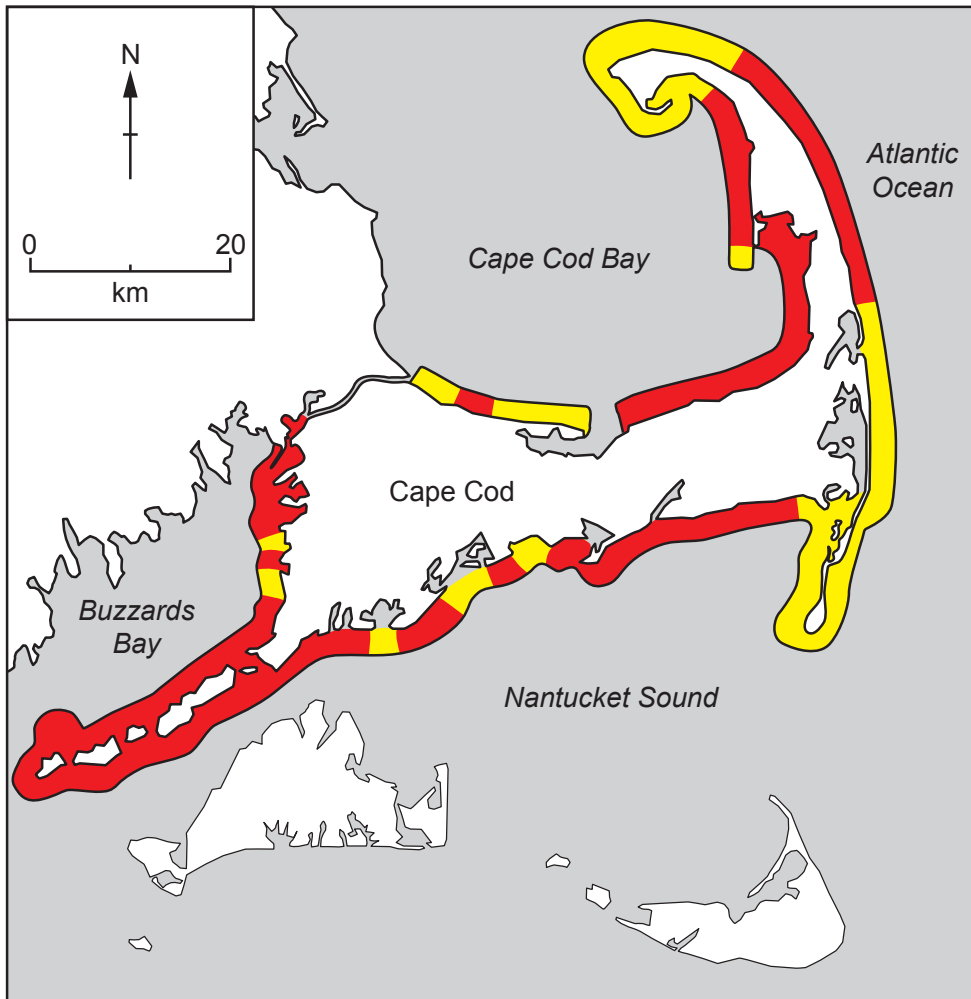


Fig. 4.1 for Question 4

Marine processes operating on a coastline in north-east USA, 2017



Key

- coastline mostly undergoing marine erosion
- coastline mostly undergoing marine deposition

Fig. 7.1 for Question 7

Warning times and hazard durations of hurricanes, earthquakes and volcanoes

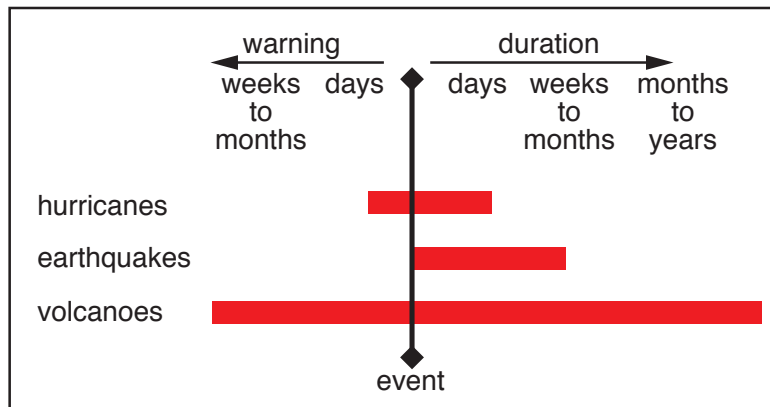


Fig. 10.1 for Question 10

A hot arid environment in California, USA



BLANK PAGE

The boundaries and names shown, the designations used and the presentation of material on the maps contained in this question paper/insert do not imply official endorsement or acceptance by Cambridge Assessment International Education concerning the legal status of any country, territory, or area or any of its authorities, or of the delimitation of its frontiers or boundaries.

Permission to reproduce items where third-party owned material protected by copyright is included has been sought and cleared where possible. Every reasonable effort has been made by the publisher (UCLES) to trace copyright holders, but if any items requiring clearance have unwittingly been included, the publisher will be pleased to make amends at the earliest possible opportunity.

To avoid the issue of disclosure of answer-related information to candidates, all copyright acknowledgements are reproduced online in the Cambridge Assessment International Education Copyright Acknowledgements Booklet. This is produced for each series of examinations and is freely available to download at www.cambridgeinternational.org after the live examination series.

Cambridge Assessment International Education is part of the Cambridge Assessment Group. Cambridge Assessment is the brand name of the University of Cambridge Local Examinations Syndicate (UCLES), which itself is a department of the University of Cambridge.