



General Certificate of Secondary Education

---

**Construction and the Built Environment**

**Pre-Release Material**

**Examination Copy**

Assessment Unit 1: The Construction  
Industry for the 21<sup>st</sup> Century

**[GCB11]**

**JANUARY 2014 AND SUMMER 2014**

---



You must only use **this** clean copy of the Pre-Release Material in the examination and **not** your own annotated copy

**NOTE: Students will require the use of a scale ruler during the examination.**

## Construction and the Built Environment

### Introduction

A copy of the pre-release information for this examination is included in the following pages

**NOTE Students will require the use of a scale ruler during the examination.**



**FRONT ELEVATION**

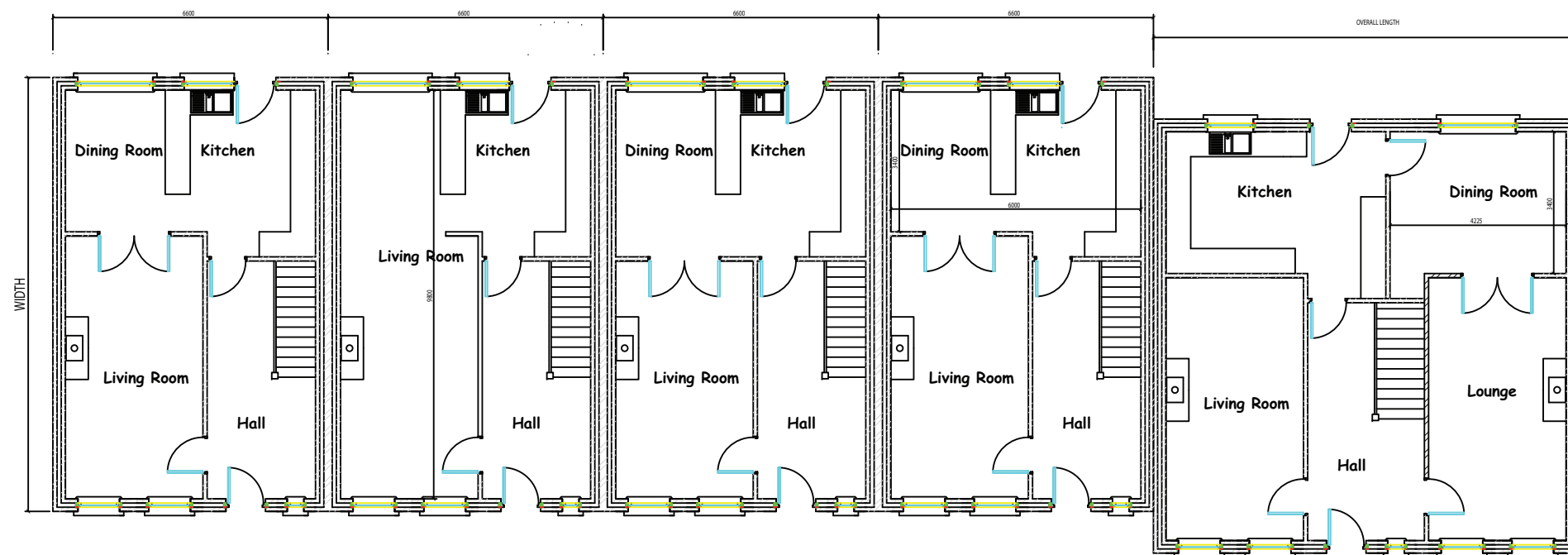
**GCSE Construction and the  
Built Environment**

**Unit 1**

**Pre-Release materials**

**JANUARY 2014 - SUMMER 2014**

**Not to scale    Drawing Number 01**



House A

House B

House C

House D

House E

**Working Drawing**

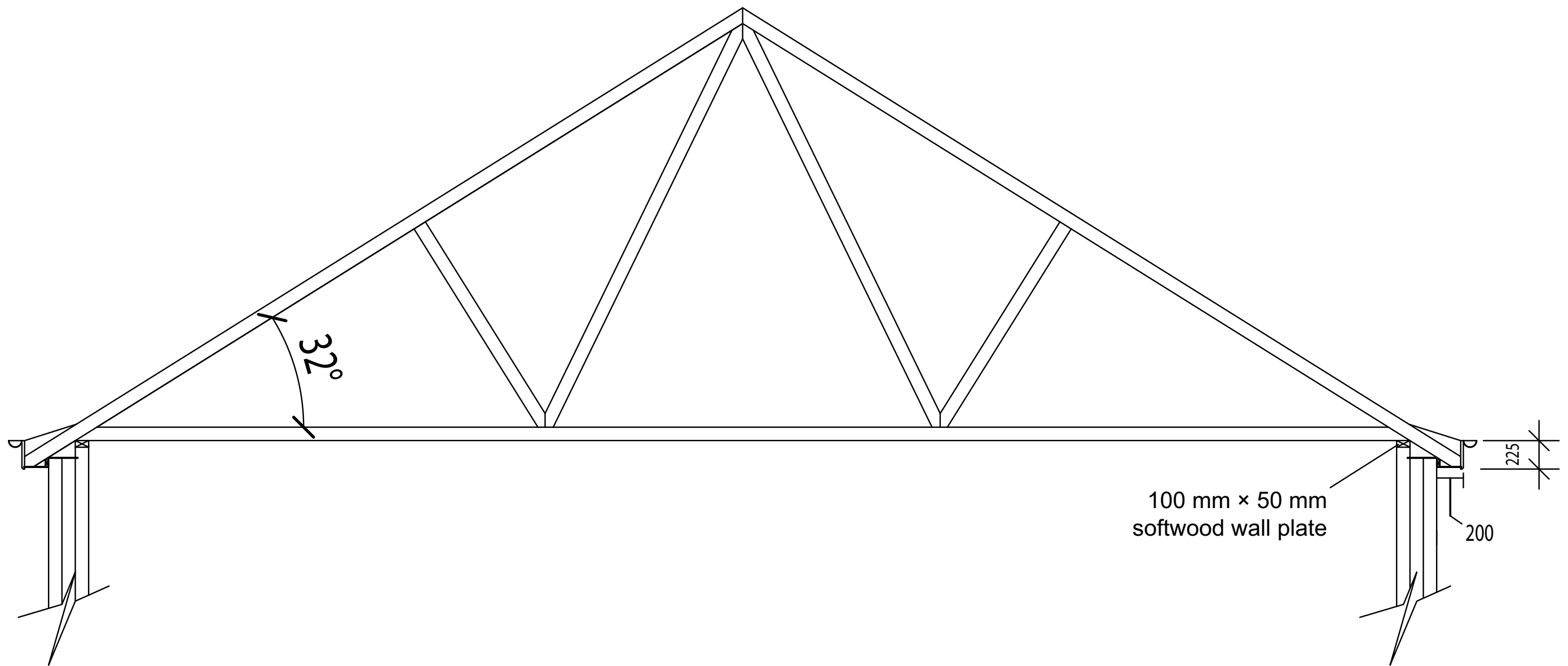
**GCSE Construction and the  
Built Environment**

**Unit 1**

**Pre-Release materials**

**JANUARY 2014 - SUMMER 2014**

Not to scale Drawing Number 02



**TRUSS RAFTERS SPACED AT 400MM CENTRES**

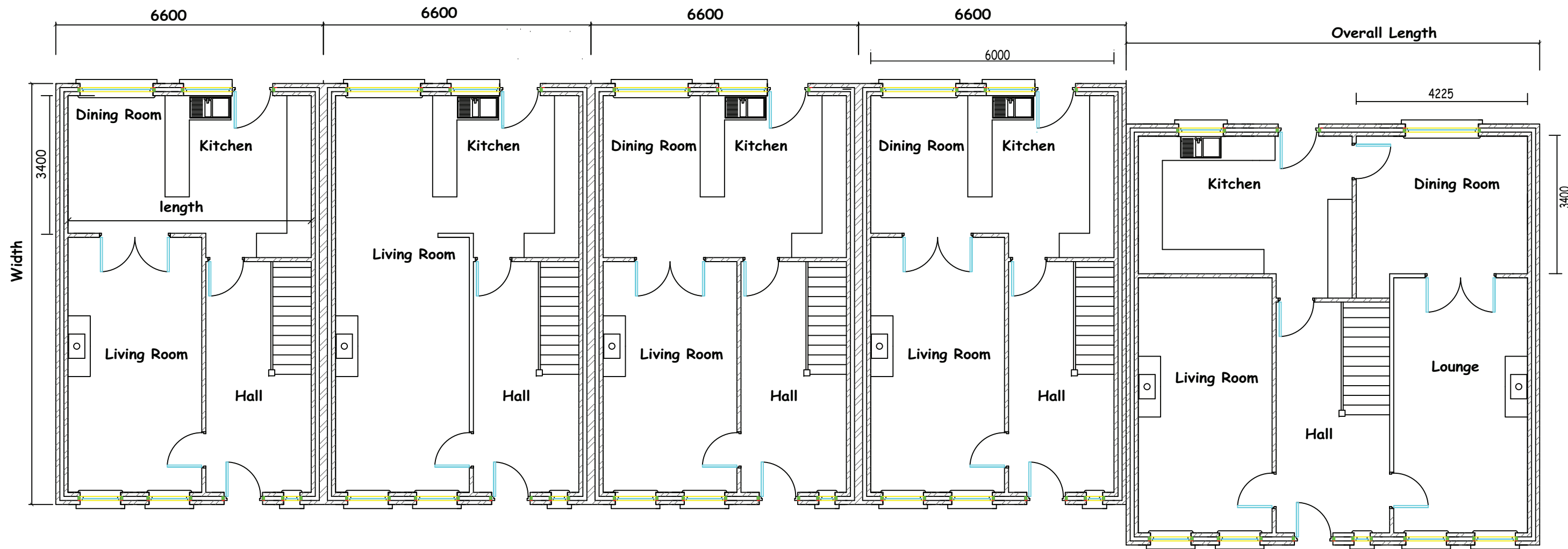
**GCSE Construction and the  
Built Environment**

**Unit 1**

**Pre-Release materials**

**JANUARY 2014 - SUMMER 2014**

**Not to scale Drawing Number 03**



House A

House B

House C

House D

House E

Plan view

**GCSE Construction and the Built Environment**

**Unit 1**

Pre- release materials

**JANUARY 2014 - SUMMER 2014**

Scale 1:100 Drawing Number 04