



*Rewarding Learning*

**General Certificate of Secondary Education  
2011–2012**

---

**Science: Single Award (Modular)**

Staying Alive

Module 1

Foundation Tier

**[GSC11]**

**TUESDAY 15 MAY 2012**

**9.15 am–10.00 am**

---

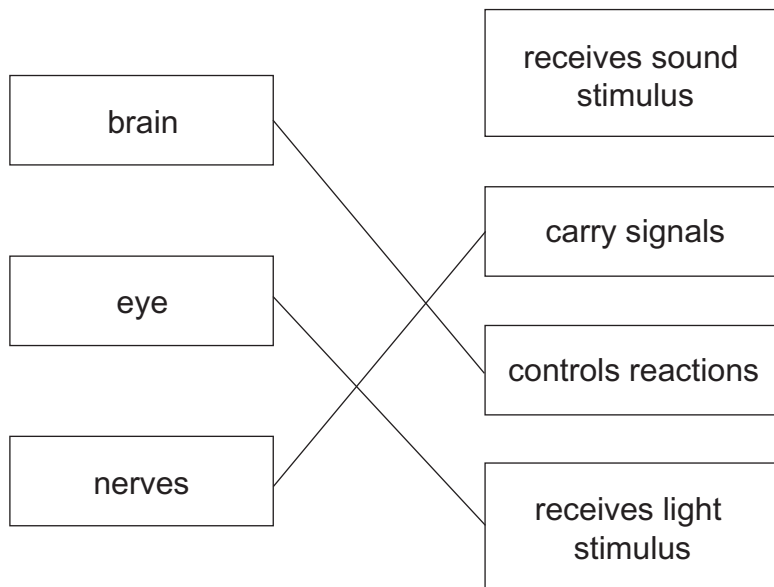
**MARK  
SCHEME**

- 1 (a) transports nutrients to foetus, amnion, placenta [3]  
 (b) (i) to have termination or not [1]  
 (ii) any suitable – medical, religious, family, moral [1]  
 (c) cervix [1]  
 (d) uterus, placenta [2]

AVAILABLE MARKS

8

2 (a)



[3]

(b)

ACTION	VOLUNTARY	REFLEX
reading this question	✓	
knee jerk		✓
running	✓	
kissing	✓	

[2]

(c) (i) skin [1]

(ii) muscles/**appropriate** named muscle e.g. leg muscle, arm muscle [1]

7

			AVAILABLE MARKS	
3	(a)	(i) ADBC 2 marks AD/DB/BC anywhere 1 mark	[2]	8
		(ii) forceps	[1]	
		(iii) all except part A shaded	[1]	
		(iv) yellow-brown	[1]	
	(b)	(i) oxygen	[1]	
		(ii) cells/organisms, energy animals and plants	[2]	
4	(a)	(i) ears; spots/coat/colour; noses Any 2	[2]	8
		(ii) asexual, identical	[2]	
		(iii) faster, know characteristics/better quality/cheaper/more yield	[1]	
	(b)	(i) complementary helix, (inside box) and complete	[2]	
		(ii) nucleus/genes/chromosomes	[1]	
5	(a)	all plots correct 2 4/5 correct – 1 mark smooth curve 1 – must not be through origin	[3]	7
	(b)	(i) more active energy needs increase	[1]	
		(ii) 8–30: older they get needs increase, 30–60: older adults get needs decrease	[2]	
	(c)	gender/pregnancy	[1]	
6	(a)	eating too much constantly, intake exceeds energy needs/eating more than need/excess stored as fat	[3]	7
	(b)	(i) no one under age of 30/all older/no one born with	[1]	
		(ii) 6 + 14 + 18 + 50 + 68 + 46 202 If one reading from graph incorrect – 1 mark	[2]	
		(iii) only 1 GP/location/only type 2 shown/low numbers	[1]	
	<b>Total</b>			