

OCR

Oxford Cambridge and RSA

Friday 25 May 2018 – Afternoon

GCSE DESIGN AND TECHNOLOGY

Textiles Technology

A575/01 Sustainability and Technical Aspects of Designing and Making

Candidates answer on the Question Paper.

OCR supplied materials:

None

Other materials required:

None

Duration: 1 hour 30 minutes



Candidate forename		Candidate surname	
-----------------------	--	----------------------	--

Centre number						Candidate number				
---------------	--	--	--	--	--	------------------	--	--	--	--

INSTRUCTIONS TO CANDIDATES

- Write your name, centre number and candidate number in the boxes above. Please write clearly and in capital letters.
- Use black ink. HB pencil may be used for graphs and diagrams only.
- Read each question carefully. Make sure you know what you have to do before starting your answer.
- Write your answer to each question in the space provided. Additional paper may be used if necessary but you must clearly show your candidate number, centre number and question number(s).
- Answer **all** the questions in Section A **and** Section B.
- Do **not** write in the barcodes.

INFORMATION FOR CANDIDATES

- The number of marks is given in brackets [] at the end of each question or part question.
- The total number of marks for this paper is **80**.
- Your quality of written communication is assessed in the questions marked with an asterisk (*).
- This document consists of **20** pages. Any blank pages are indicated.

Section A

Answer **all** the questions.

You are advised to spend about 40 minutes on this section.

On questions 1–5 **circle** your answer.

- 1** Which of the following is a natural fibre?
- (a) Acrylic
 - (b) Viscose
 - (c) Wool
 - (d) Polyester
- [1]**
- 2** Solar power is:
- (a) A renewable energy source
 - (b) A non-renewable energy source
 - (c) A recyclable form of energy
 - (d) A non-recyclable form of energy
- [1]**
- 3** The eco-footprint of a garment is:
- (a) Information about how to return a faulty garment
 - (b) How much it costs to manufacture a garment
 - (c) How much carbon dioxide is caused by the manufacture of a garment
 - (d) How to safely dispose of an unwanted garment
- [1]**
- 4** Polartec fleece is made from:
- (a) Recycled fleece garments
 - (b) Recycled old clothes
 - (c) Recycled plastic bags
 - (d) Recycled plastic bottles
- [1]**

5 To rethink a product means to:

- (a) Take it apart
- (b) Re-design it
- (c) Use it again
- (d) Mend it when it is broken

[1]

6 Give the term used to describe the stage a product goes through from conception to decomposition.

..... [1]

7 Give the term that describes the second hand use of a product.

..... [1]

8 The symbol below stands for:



..... [1]

9 Which **one** word describes a country's traditions, skills, religions or beliefs?

..... [1]

10 Complete the following to give the meaning of the abbreviation ITCLC.

International **C**..... **L**..... **C**ode [1]

4

Decide whether the following statements below are **True** or **False**.

Tick [✓] the box to show your answer.

	True	False	
11 Ergonomics is the study of a person's lifestyle.	<input type="checkbox"/>	<input type="checkbox"/>	[1]
12 Reusing garments is good for the environment.	<input type="checkbox"/>	<input type="checkbox"/>	[1]
13 Built-in obsolescence in products is environmentally friendly.	<input type="checkbox"/>	<input type="checkbox"/>	[1]
14 Hydropower is not sustainable.	<input type="checkbox"/>	<input type="checkbox"/>	[1]
15 Neoprene is a manmade fabric.	<input type="checkbox"/>	<input type="checkbox"/>	[1]

5
BLANK PAGE

PLEASE DO NOT WRITE ON THIS PAGE
Turn over for the next question

16 Fig. 1 shows a pair of viscose (rayon) trousers.

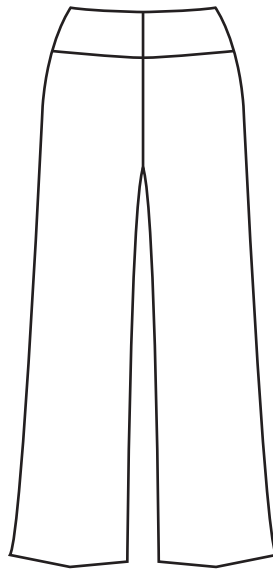


Fig. 1

(a) Give **four** performance characteristics of viscose (rayon) that make it a suitable fabric for the trousers.

- 1.....
- 2.....
- 3.....
- 4.....

[4]

(b) Viscose (rayon) is a regenerated fibre.

Explain what is meant by a regenerated fibre.

-
-
-
-

[2]

(c) State **two** advantages to the environment of regenerated fibres.

- 1.....
-
- 2.....
-

[2]

- (d) The viscose (rayon) trousers shown in Fig. 1 are to be modified to be worn at a summer music festival.

In the space below, sketch a design for the modified trousers.

Your design must show:

- disposal of fullness
- pattern and colours
- a decorative technique.

Annotate your sketch to show all design, colours and construction details.

Section B

You are advised to spend 50 minutes on this section.

17 Fig. 2 shows a beach poncho.

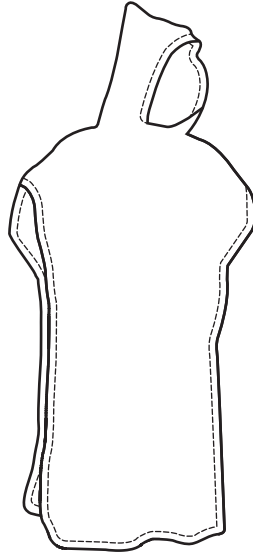


Fig. 2

(a) The beach poncho is made from cotton terry towelling fabric.

Explain why cotton terry towelling fabric is suitable for the poncho.

.....

.....

.....

.....

.....

.....

..... [4]

(b) Fig. 3 shows the seam used to make the poncho.

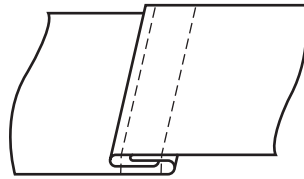


Fig. 3

(i) Name the seam shown in Fig. 3.

..... [1]

(ii) Give **two** reasons why this is a suitable seam for the poncho.

1

2

[2]

(c) State **two** methods of neatening the edge of the poncho.

1

2

[2]

18 Fig. 4 shows a shirt.

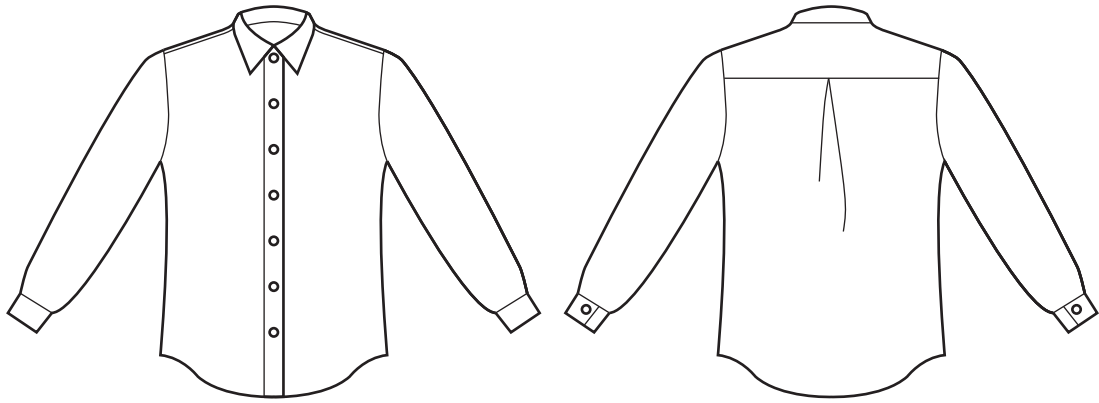


Fig. 4

Fig. 5 shows an incorrect pattern lay for the shirt.

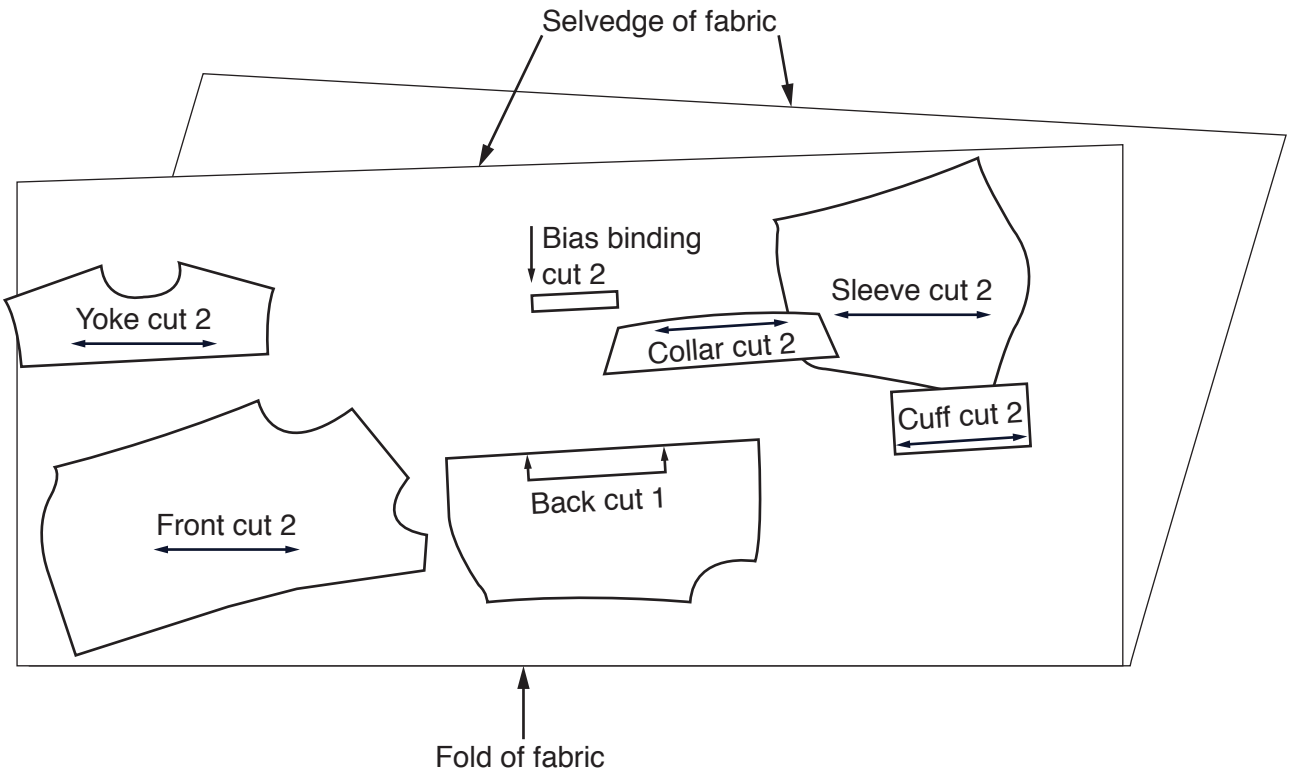


Fig. 5

(a) Identify **four** errors that have been made in the pattern lay shown in Fig. 5.

- 1.....
 -
 - 2.....
 -
 - 3.....
 -
 - 4.....
 -
- [4]

(b) Explain **two** problems that could result from an incorrect pattern lay.

- 1.....
 -
 -
 -
- [2]
- 2.....
 -
 -
 -
- [2]

(c) Fig. 6 shows some equipment that could be used to transfer pattern markings to fabric.

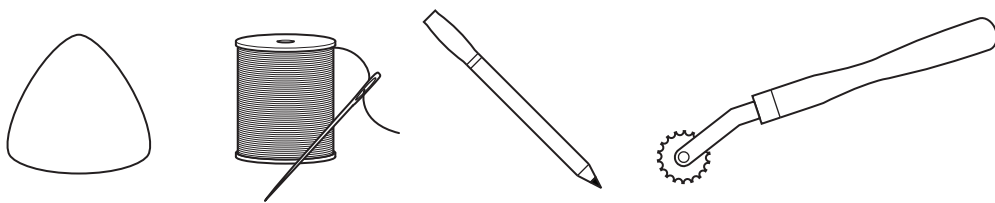
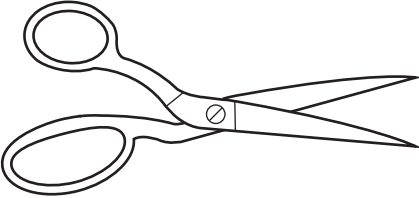

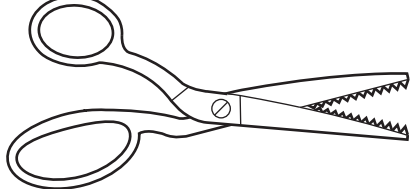
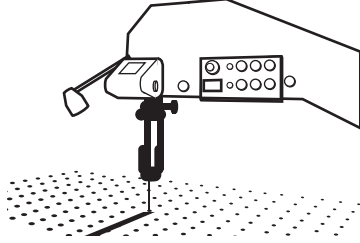


Fig. 6

Name **two** methods of transferring pattern markings to fabric.

- 1.....
 - 2.....
- [2]

- (d) (i) The table below shows a range of tools used for cutting.
Name the tools shown.
The first one has been done for you.

Tool	Name
	<p><u>Dressmaker's shears</u></p>
	<p>_____</p>
	<p>_____</p>
	<p>_____</p>

[3]

- (ii) Give **one** advantage and **one** disadvantage of using industrial cutting tools rather than scissors when manufacturing in quantity.

Advantage

..... [1]

Disadvantage

..... [1]

19 Fig. 7 shows a child's school bag with an appliquéd decoration.



Fig. 7

(a) Describe, using notes and/or diagrams, how to work appliqué.

(b) Give **three** components that could be used to add interest to the bag.

1.....

2.....

3.....

[3]

(c) Primary school children are encouraged to wear a hat in the playground to protect them from the sun.

The hat should:

- protect the child from the sun
- be suitable for boys and girls.

In the space below, sketch a design for a sun hat.

Annotate your sketch to show design, colour and construction details.

[6]

17
BLANK PAGE

PLEASE DO NOT WRITE ON THIS PAGE

18
BLANK PAGE

PLEASE DO NOT WRITE ON THIS PAGE

19
BLANK PAGE

PLEASE DO NOT WRITE ON THIS PAGE

PLEASE DO NOT WRITE ON THIS PAGE

OCR
Oxford Cambridge and RSA

Copyright Information

OCR is committed to seeking permission to reproduce all third-party content that it uses in its assessment materials. OCR has attempted to identify and contact all copyright holders whose work is used in this paper. To avoid the issue of disclosure of answer-related information to candidates, all copyright acknowledgements are reproduced in the OCR Copyright Acknowledgements Booklet. This is produced for each series of examinations and is freely available to download from our public website (www.ocr.org.uk) after the live examination series.

If OCR has unwittingly failed to correctly acknowledge or clear any third-party content in this assessment material, OCR will be happy to correct its mistake at the earliest possible opportunity.

For queries or further information please contact the Copyright Team, First Floor, 9 Hills Road, Cambridge CB2 1GE.

OCR is part of the Cambridge Assessment Group; Cambridge Assessment is the brand name of University of Cambridge Local Examinations Syndicate (UCLES), which is itself a department of the University of Cambridge.