

OXFORD CAMBRIDGE AND RSA EXAMINATIONS
GCSE (9–1)
J536/05
MUSIC
Listening and Appraising
INSERT for questions 5 and 7
WEDNESDAY 6 JUNE 2018: Afternoon
MODIFIED ENLARGED 24pt

First name						Last name					
Centre number						Candidate number					

READ INSTRUCTIONS OVERLEAF



INSTRUCTIONS

Write your name, centre number and candidate number in the spaces provided on the front page. Please write clearly and in capital letters.

Use black ink. Pencil may be used for graphs and diagrams only.

This insert should be used to answer questions 5 and 7.

Write your answers to question 7 in the spaces provided in this insert, and attach it to your answer booklet.

BLANK PAGE

BLANK PAGE

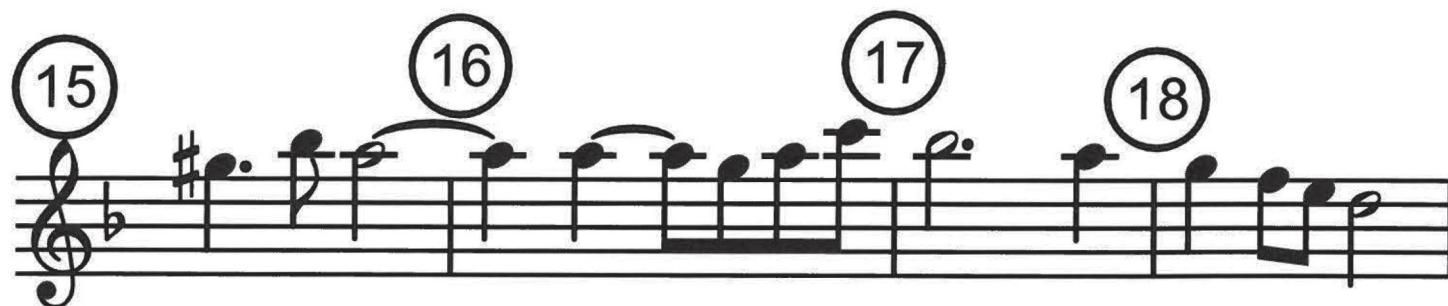
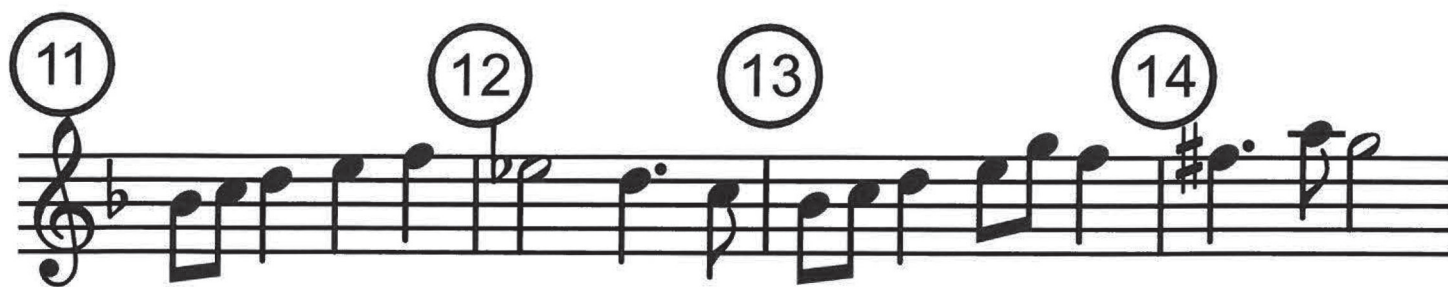
Score for question 5

2 3

4 5 6

7 8

9 10



Score for question 7

Musical score for question 7, consisting of three staves of music in 3/4 time, key of B-flat major. The score includes lyrics and dynamic markings.

Staff 1:

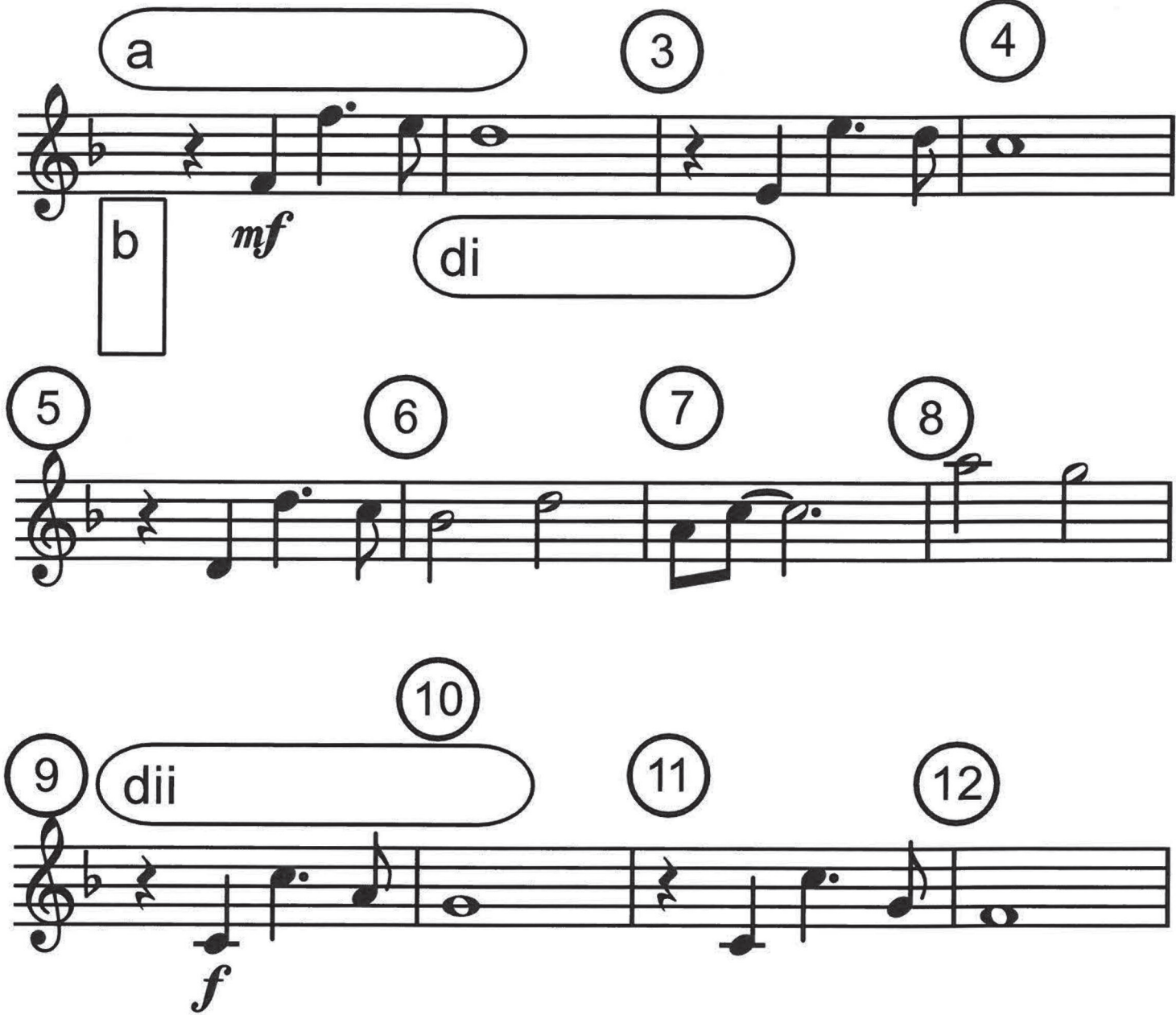
- Measure 1: (a) [] (3) (4)
- Measure 2: (b) [] *mf* (di) []

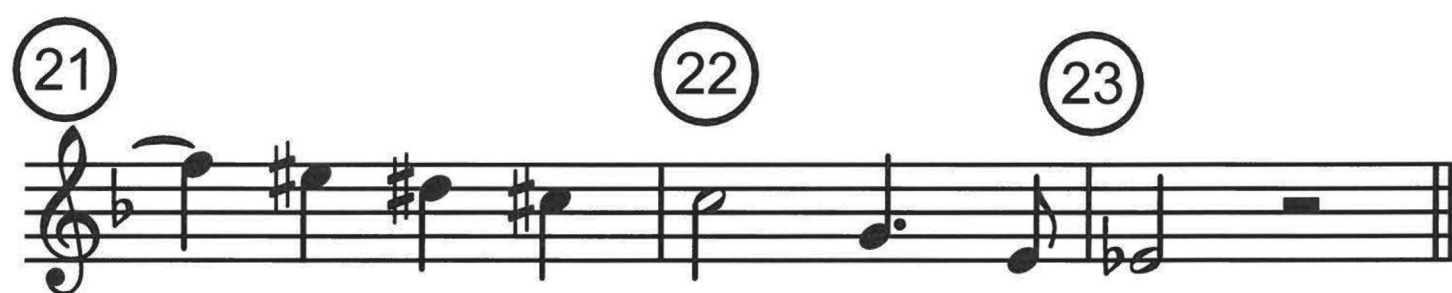
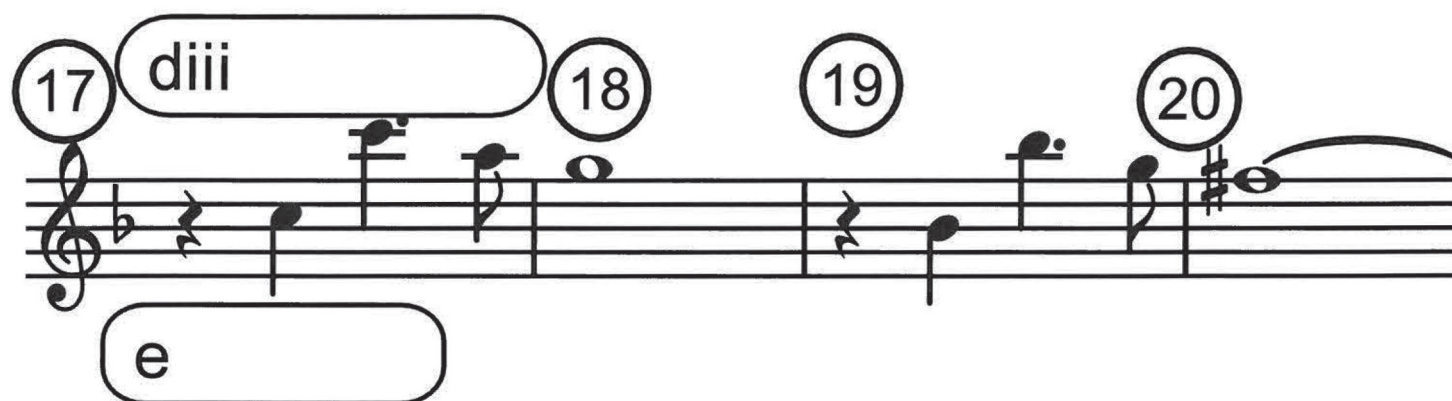
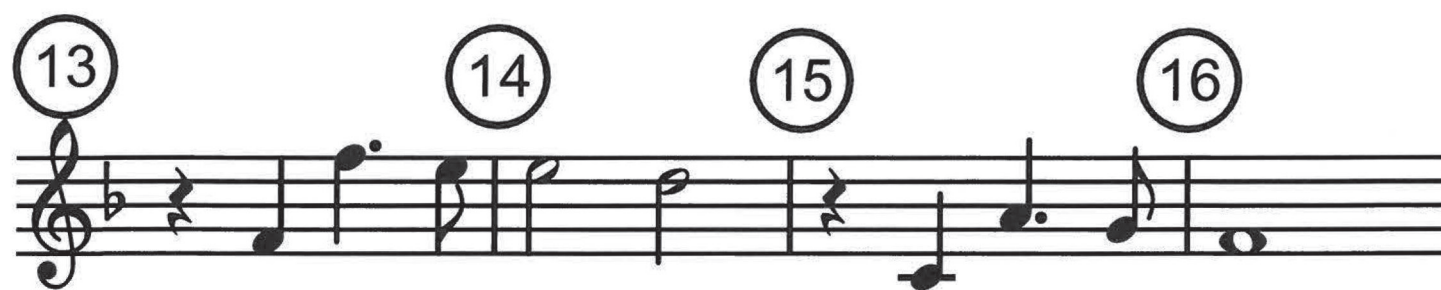
Staff 2:

- Measure 3: (5) (6) (7) (8)

Staff 3:

- Measure 4: (9) (10) (11) (12)
- Measure 5: *f* (dii) []





Copyright Information

OCR is committed to seeking permission to reproduce all third-party content that it uses in its assessment materials. OCR has attempted to identify and contact all copyright holders whose work is used in this paper. To avoid the issue of disclosure of answer-related information to candidates, all copyright acknowledgements are reproduced in the OCR Copyright Acknowledgements Booklet. This is produced for each series of examinations and is freely available to download from our public website (www.ocr.org.uk) after the live examination series.

If OCR has unwittingly failed to correctly acknowledge or clear any third-party content in this assessment material, OCR will be happy to correct its mistake at the earliest possible opportunity.

For queries or further information please contact the Copyright Team, First Floor, 9 Hills Road, Cambridge CB2 1GE.

OCR is part of the Cambridge Assessment Group; Cambridge Assessment is the brand name of University of Cambridge Local Examinations Syndicate (UCLES), which is itself a department of the University of Cambridge.